

pink bar

yellow bar

yellow bar

yellow bar with orange segment

pink bar

yellow bar

yellow bar

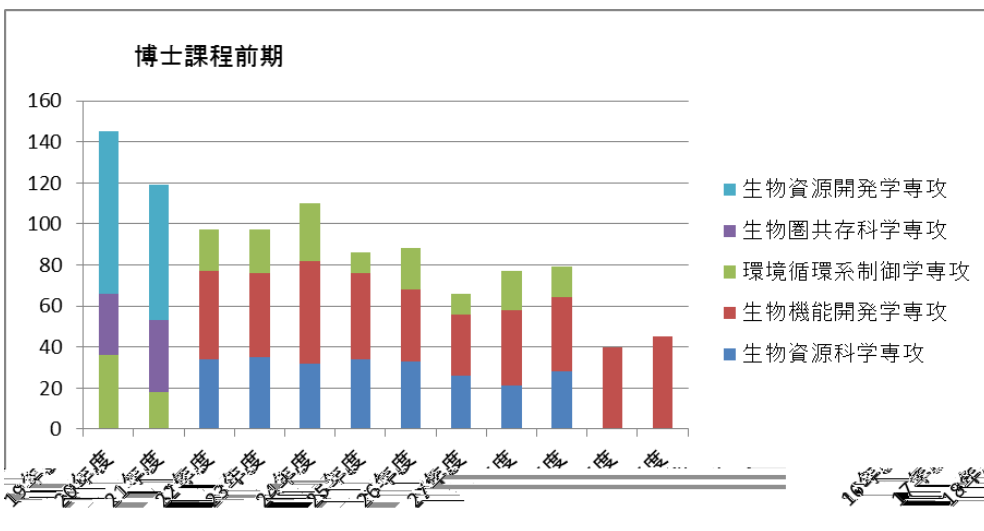
yellow bar with orange segment

pink bar

yellow bar with green triangles

	Introduction to Animal Production Science	Introduction to Applied Molecular and Cell Biology
	Introduction to Plant Production Science	Introduction to Applied Molecular and Cell Biology
	Introduction to Plant Production Science	Current and Future States of the Research in the Fisheries Science
	Introduction to Animal Production Science	Current and Future States of the Research in the Fisheries Science
	Introduction to Animal Production Science	Introduction to Food Science

H26	Introduction to Applied Molecular and Cell Biology	
H27		<p>Global Environmental Issues and Managements</p> <p>Food Physics and Chemistry</p> <p>Modern Food Science</p> <p>Insect Science</p> <p>Fish Production</p> <p>Development of Agriculture and Rural Community</p> <p>Plankton, Benthos and Seaweed Production</p> <p>Animal Science and Technology</p> <p>Physiology of Field Crop Production</p> <p>Resource Management</p> <p>Tropical Biosphere Science I</p> <p>Tropical Biosphere Science II</p>



	22	23	24	25	26	27
	38	38	42	44	29	29
	19	9	11	6	16	16
	57	47	53	50	45	45

(

	22	23	24	25	26	27
	15	30	27	27	34	31
	20	11	10	12	10	12
	8	26	26	21	33	27
	27	7	6	11	9	5
	70	74	69	71	86	75

	22	23	24	25	26	27
	4	2	2	8	3	5
	8	13	2	12	10	9
	12	15	4	20	13	14

	22	23	24	25	26	27
	-	-	-	-	-	-
	2	10	8	5	4	4
	2	10	8	5	4	4

	22	23	24	25	26	27
	8	2	2	6	6	4
	9	3	3	4	12	7
	17	5	5	10	18	11

TOEIC e-Learning

	22	23	24	25	26	27
	-	-	-	-	-	-
	55	59	42	47	45	31
	4	11	4	5	3	1
	59	70	46	52	48	32

H23. 12. 9

H23. 4. 12

H24. 8. 2

H21. 10. 9

H19. 12. 19

H18. 12. 27

H19. 3. 21

H18. 8. 21

H14. 7. 15

H11. 1. 21

H5. 3. 22

H21. 3. 19

H25. 3. 25

H25. 3. 14

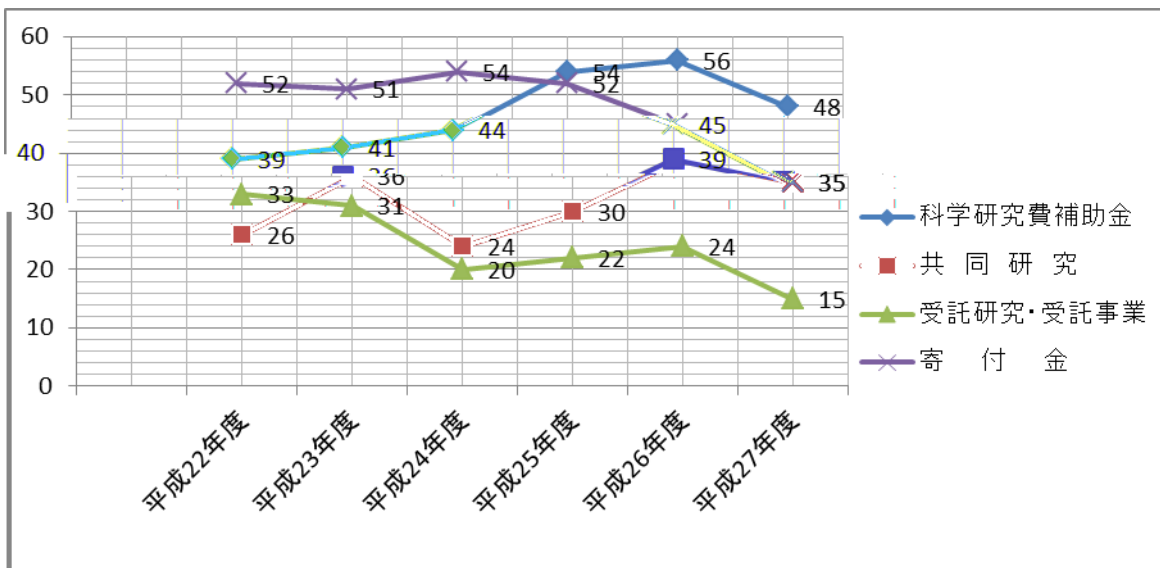
H27. 7. 1

H27. 11. 13

H27. 6. 1

	6	(1)	6	(1)	0	2	(2)
	4		4		1		1
	6		0		0	0	0
	5	(1)	4	(1)	0	1	(1)
	21	(2)	14	(2)	1	3	(3)
					0	7	14

()



			()	1993.03.26
		PB-7	()	1990.03.20
		GB800SG		1999.06.01
		DIVAC 0.6L		1999.07.12
		VU-1000		1999.06.01
7		GC-1700	()	2001.06.15
7-		GC-8	()	2003.03.18
8		BELTEC SWAAT		
	()	MT-5	()	1997.12.25
				1997.12.25
	CHN	-5		2002.03.29
10			()	1999.03.18
11		IN600	()	1996.07.26
12		FLI-160	()	1996.03.21
13		MC5	()	1998.03.27
14		1800×1800×2200	()	2007.12.10
		TOC-VCSH	()	2008.04.14
		ASI-V	()	2011.02.24
16 NK		VH-1300S	()	1990.03.30
17				
18		1800×750×2300	()	1988.02.20
19		3700 -2724	()	2008.12.02
20		GC/MS GCQ	()	1998.03.25
21	PCR		()	2014.02.13
22		ARVO X4		
23		-3000		2002.12.16
25				2011.02.08
26				

¥g))

1	X	RINT-TTR/PH	()	1998.03.25
2			()	1998.03.25
3		()JSM-6390LV	()	2008.06.13
4		H-600A		
5		Ultracut N		
6	ICP	iCAP 6300	()	2007.08.30
7	(