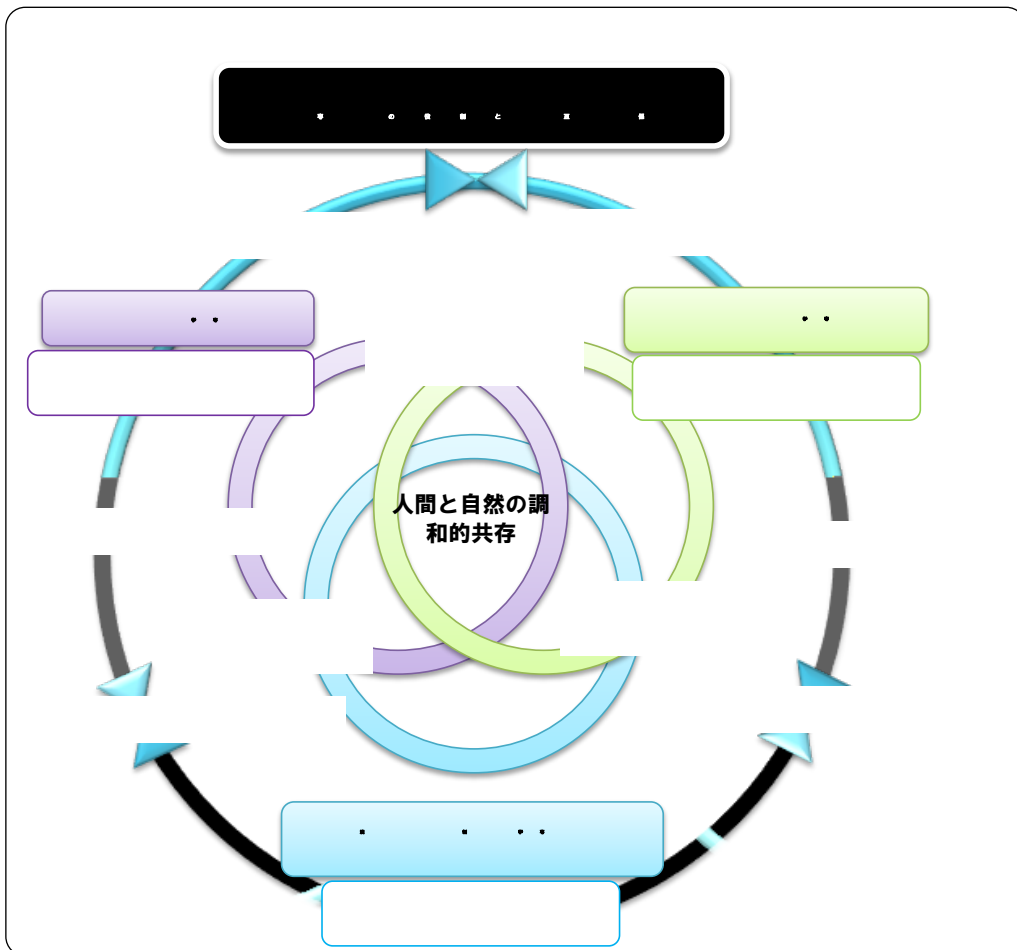


2

1	5
[]



		H27.5.1				
		14	14 (1)	0	7	35 (1)
		13	6	2	1	22
		6	7	2	3	18
		33	27 (1)	4	11	75 (1)
		1	1 (1)	2 (1)	2	6 (2)
		34	29 (2)	6 (1)	13	81 (3)

T R A C K

- ✓
- ✓
- ✓
- ✓
- ✓

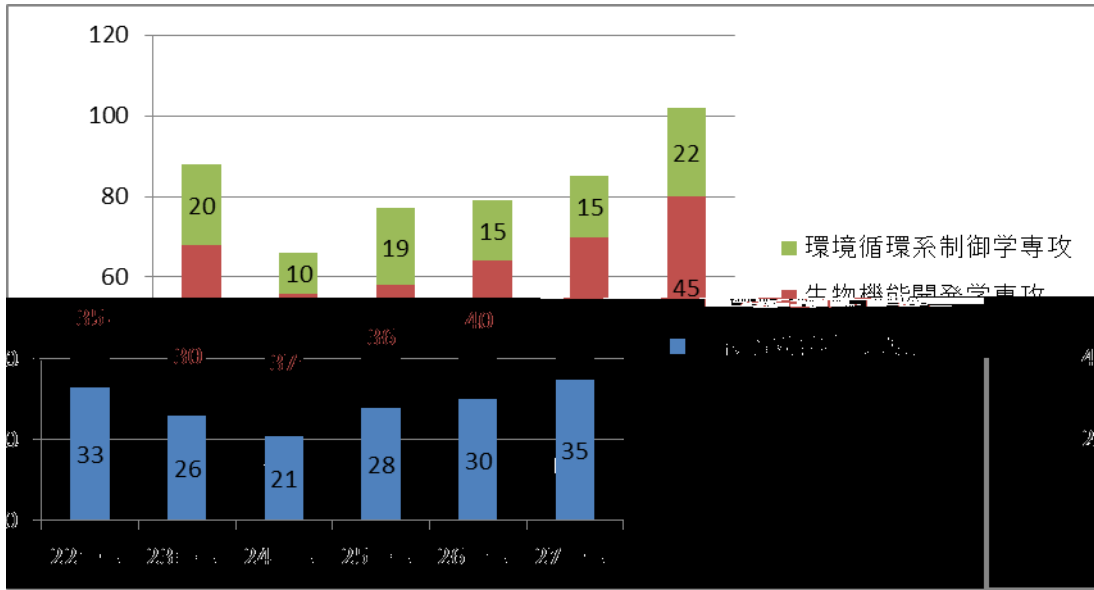
20-5

	22	23	24	25	26	27
37	45	35	16	28	20	35
	27	23	40	37	51	48
	0	0	0	0	0	0
	16	8	20	13	14	15
	0	0	1	1	0	0
*						2
*						2
	73	88	66	77	79	102

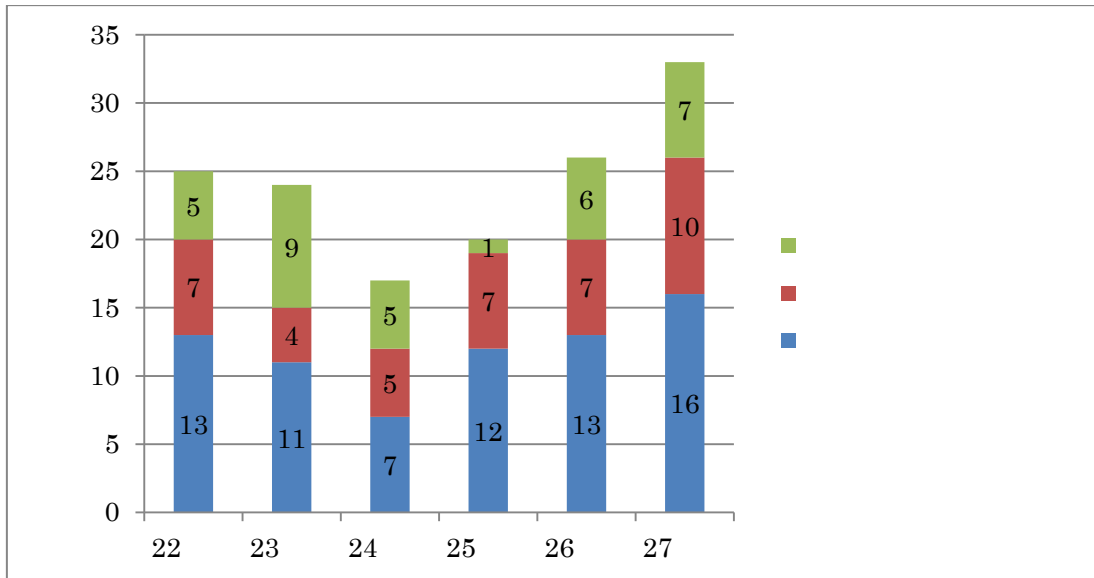
*

22	23	24	25	26	27
2	4	5	2	2	

73



33





	22	23	24	25	26	27
	7	5	6	6	6	11
					1	
					1	
	1					1
	8	5	6	6	8	12

	22	23	24	25	26	27
	10	7	7	6	7	14
		1	3	4		3
	10	8	10	10	7	17

10 11

		22	23	24	25	26	27
		8	9	9	11	11	14
		4	7	5	6	5	12
I NU		/	32	29	28	28	34
		/	9	9	7	7	7

		22	23	24	25	26	27
		17	5	5	10	18	11
		7	3	7		/	/
		(2)	(1)	(2)			

1 6

11				()
/	22	23	24	25	26	27
	4	2	2	8	3	5
	8	13	2	12	10	9
	12	15	4	20	13	14

7

11

12

27

13

13

12 13

12		()				
	22	23	24	25	26	27
	6	5	5	8	8	9
RA	30	31	21	22	29	29
	17	5	5	10	18	11
	2	10	8	5	2	4
	57	47	53	50	45	45

13 TA		()				
	77	85	60	61	70	103
	83	79	71	83	88	108
	25	29	28	31	27	33
	185	193	159	175	185	244

*

14

14	
	/ ()
	/ () /
	?



15

16-1

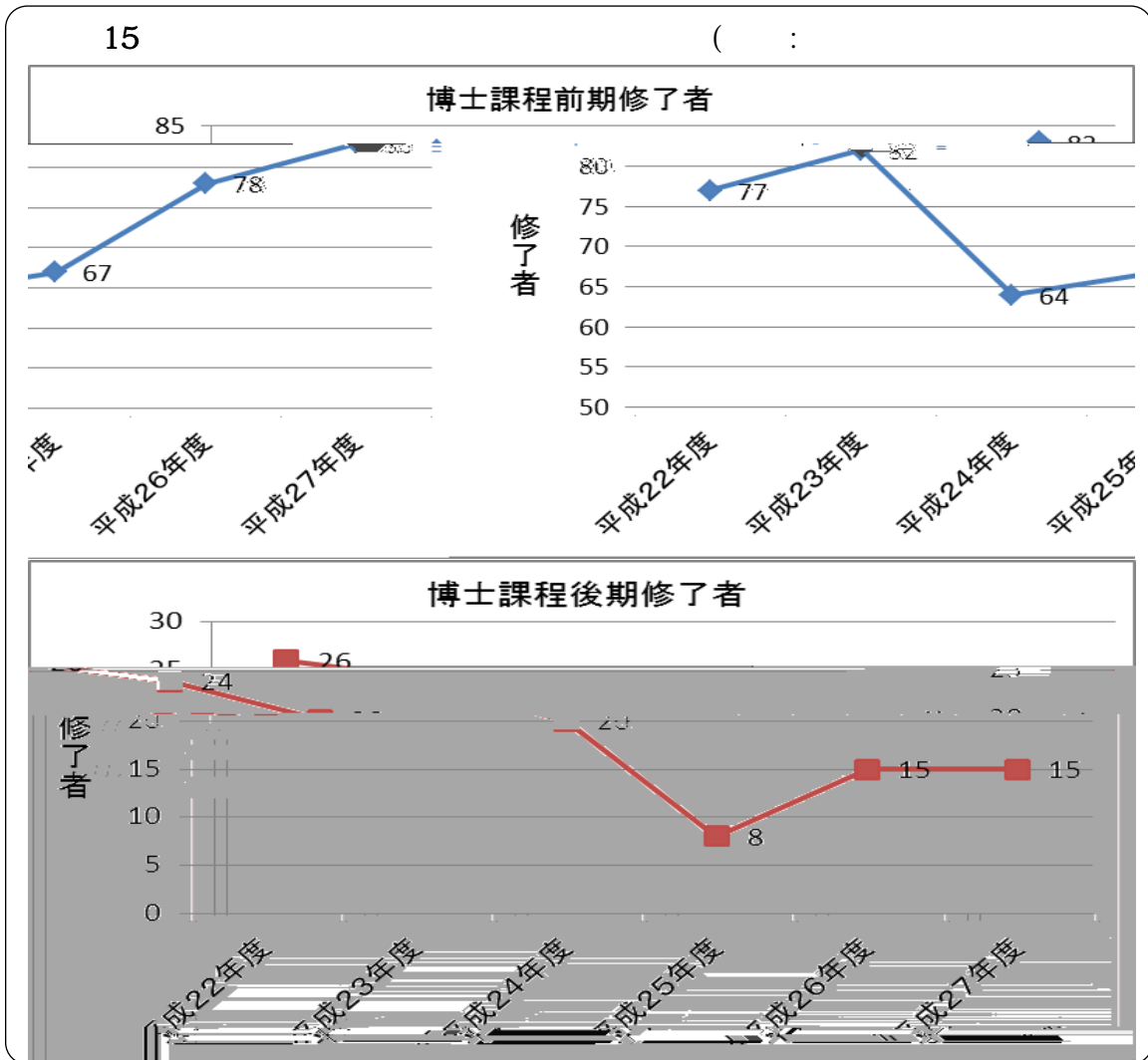
16-2

17

1

18

14



16-1

		22	23	24	25	26	27
		46	16	19	46	68	48
		43	36	19	16	34	37
		89	52	38	62	102	85
		47	33	41	51	46	48
		16	10	6	14	16	22
		63	43	47	65	62	70
		25	7	15	12	14	15
		37	10	6	6	9	8
		62	17	21	18	23	23
		214	112	106	145	187	178
(*11 1		284	248	226	222	242	282
		(0.45	0.47	0.65	0.77	0.63

22

16-2

		22	23	24	25	26	27
		5	13	5	14	2	6
		16	26	22	32	23	31
		21	39	27	46	25	37
		5	5	2	6	6	9
		12	13	10	11	11	6
		17	18	12	17	17	15
		5	1	1	4	6	2
		8	14	17	5	9	12
		13	15	18	9	15	14
		15	19	8	24	14	17
		36	53	49	48	43	49
		51	72	57	72	57	66
D)		(111)	(98)	(77)	(68)	(75)	(89)
		0.32	0.54	0.64	0.71	0.57	0.55

17

		22		23	
		/		/	
*	4	6	1.5	1	2.0
	12	36	3.0	8	1.6
	5	8	1.6	6	2.0
	5	9	1.8	9	1.7
	26	59	2.3	24	1.8
		24		25	
		/		/	
	11	29	2.6	4	2.3
	3	10	3.3	4	1.0
	6	12	2.0	0	0.0
	20	51	2.6	8	1.6
		26		27	
		/		/	
	10	22	2.2	8	3.0
	3	5	1.7	2	3.0
	2	2	1.0	5	1.6
	15	29	1.9	15	2.5

*

19 21

15

19

1

(

	24	M2	25	M2	26	M2	27	M2
U								
V								
W								
X								

20

(

	24	M2	25	M2	26	M2	27	M2
U								
V								
W								
X								

21

(

	24	M2	25	M2	26	M2	27	M2
)								

18 20-14p

14

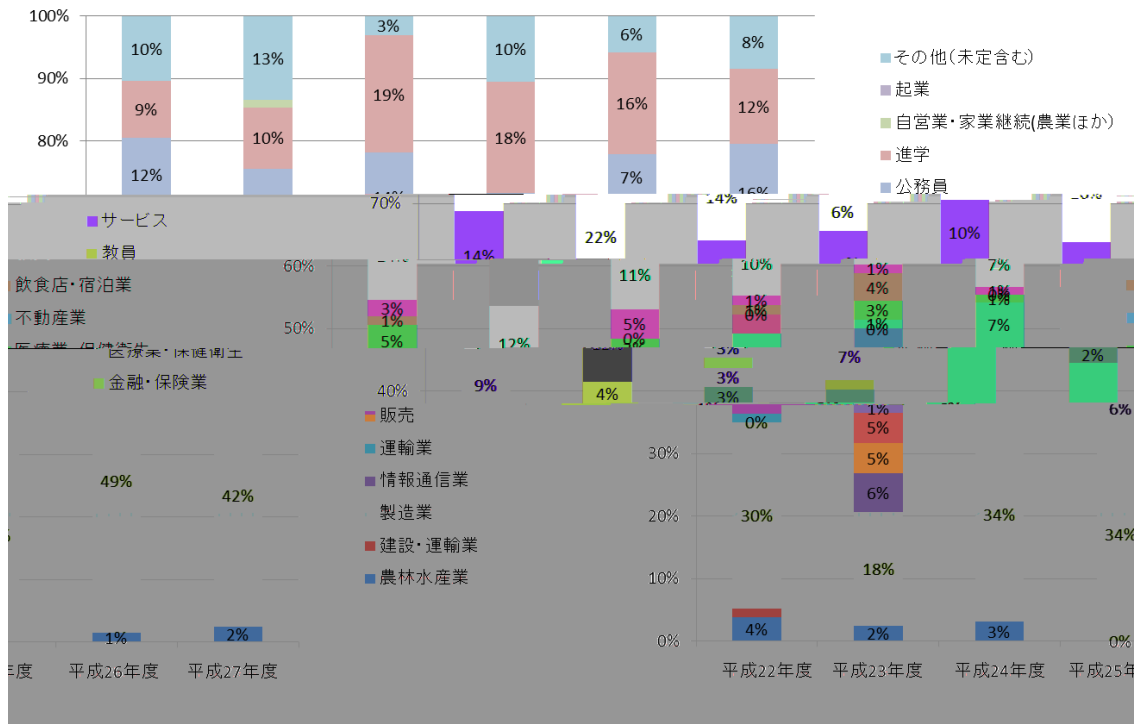
27

2.5

16-1 16-2 20-14p 17 20-14p

19 21

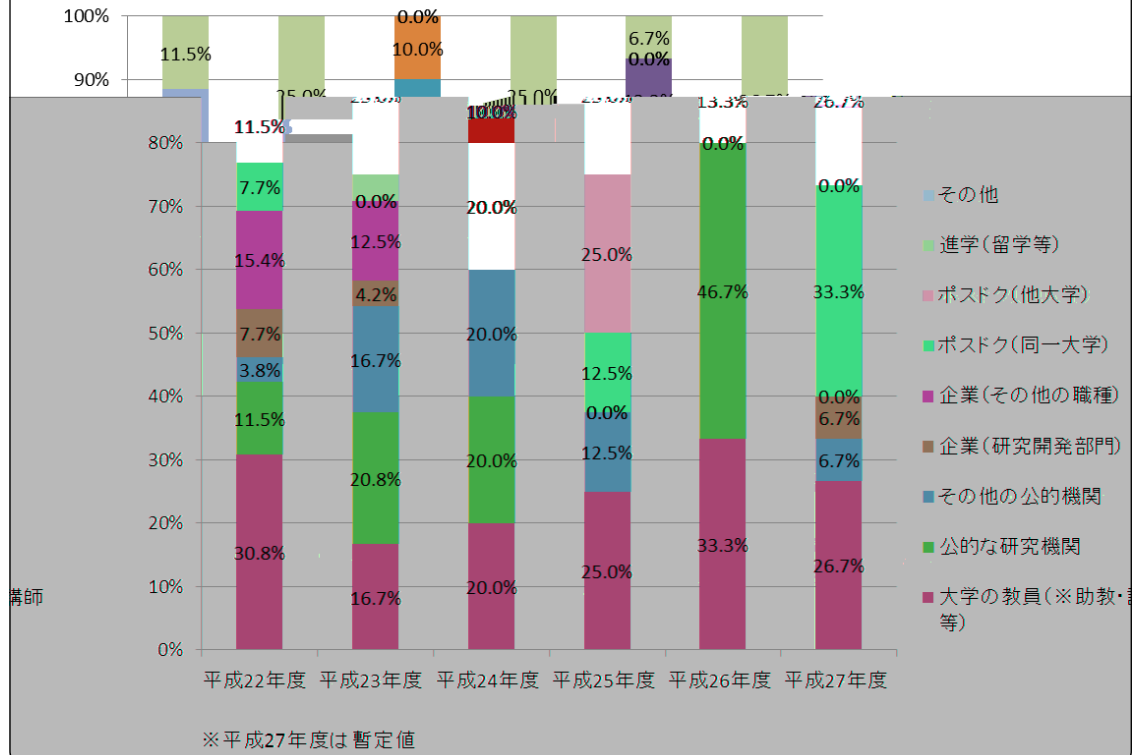
資料22 博士課程前期修了者の進学・就職状況（産業別）



	22		23		24		25		26		27	
	77		82		64		67		68		83	
	7	9.00%	8	9.80%	12	18.80%	12	17.90%	11	16.20%	10	12.00%
	62	81.80%	62	76.80%	50	78.10%	48	71.60%	53	77.90%	66	79.50%
	8		12		2		7		4		7	

資料23 博士課程後期修了者の進路状況

(出典：生物圏科学研究科作成)



24

(

U)		
V)		
W)		
X)		
Y)		

22 20-16p 23 20-17p

24 20-17p

