

24

25 5

1		1
2		4
3	23	9
4		14
5		16

24

4

9

22

26.36

24

23

24

23

2

2

24 3

2

2

4

2

“ ”

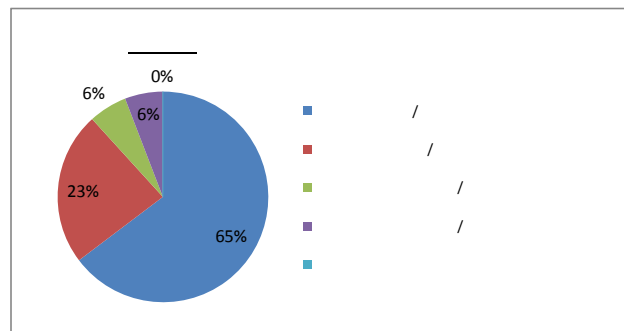
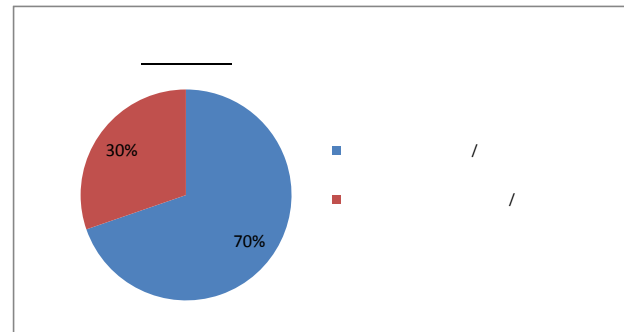
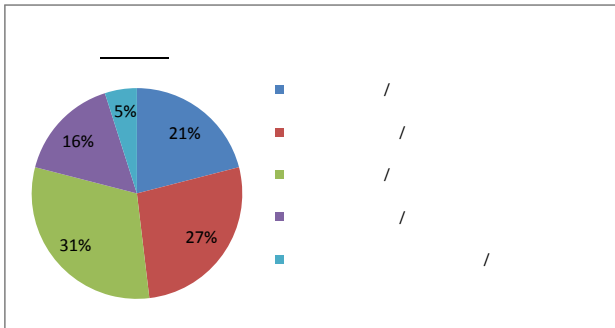
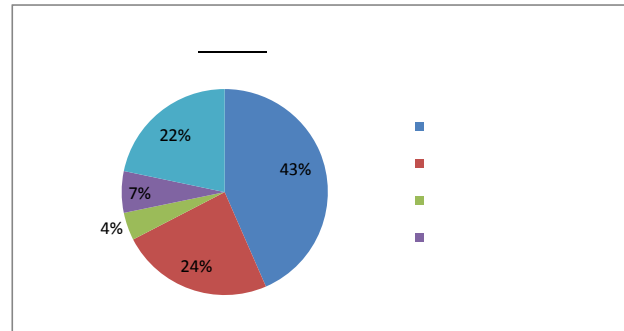
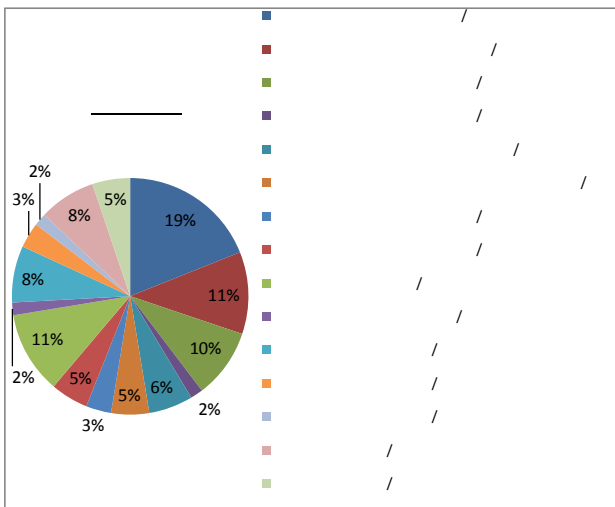
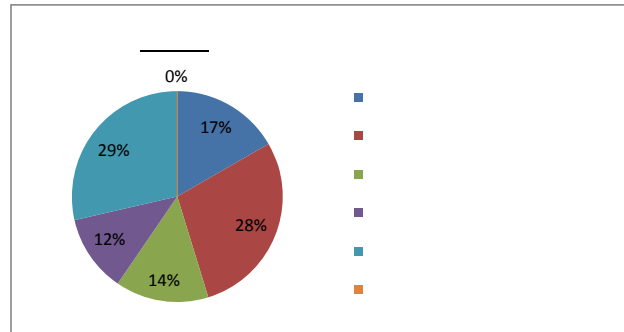
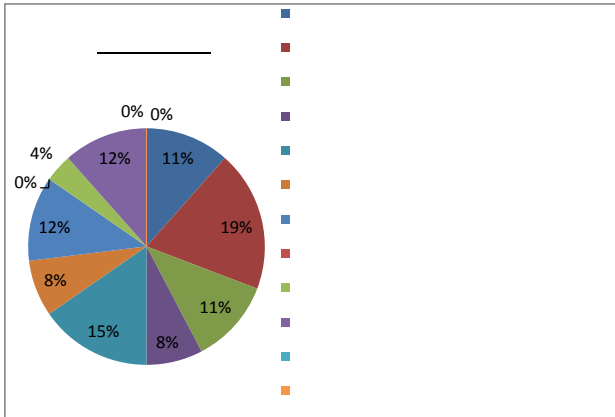
“ ”

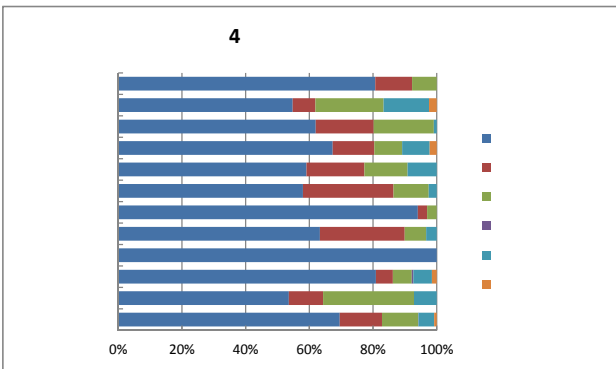
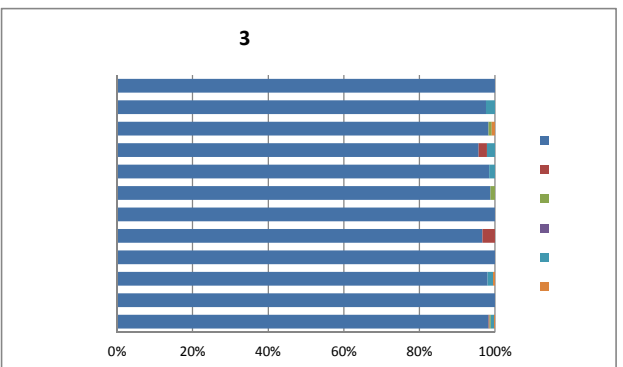
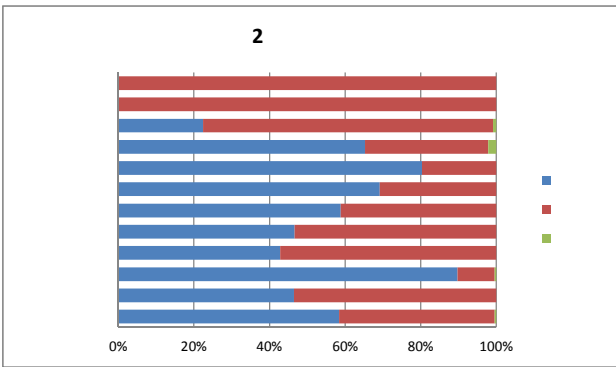
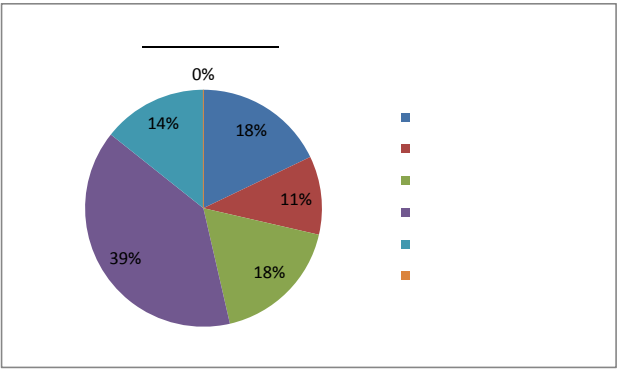
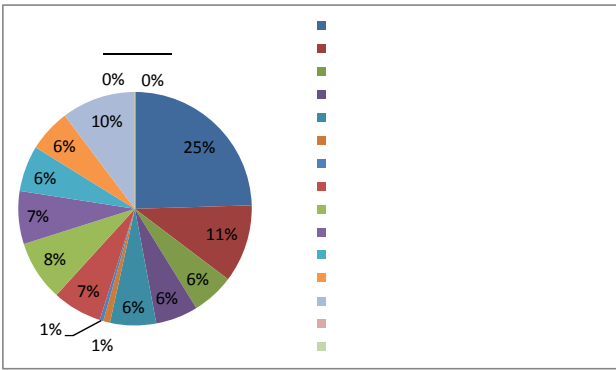
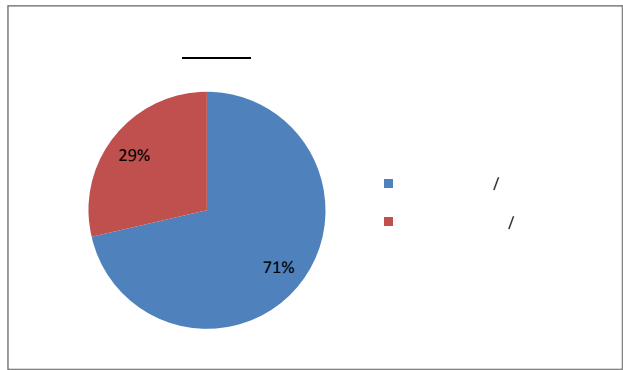
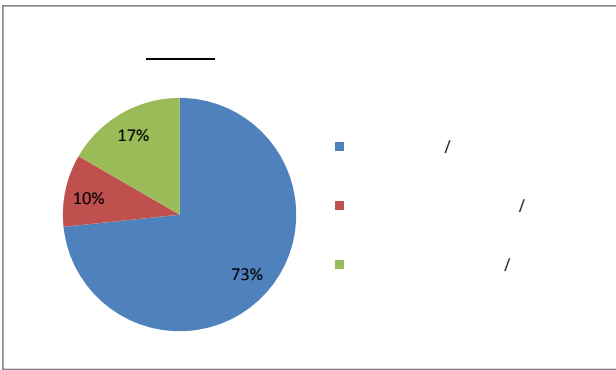
24
2012

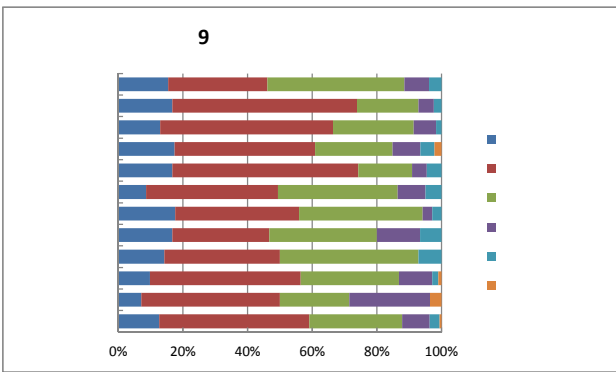
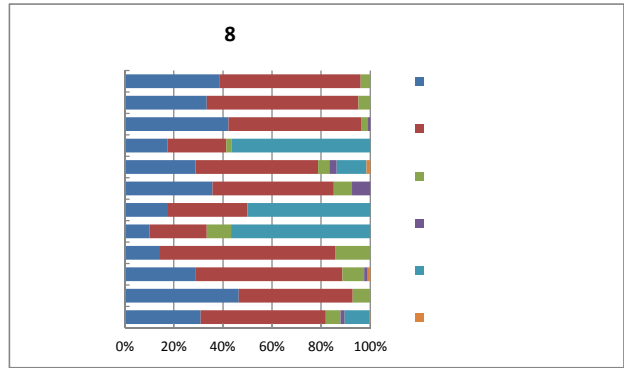
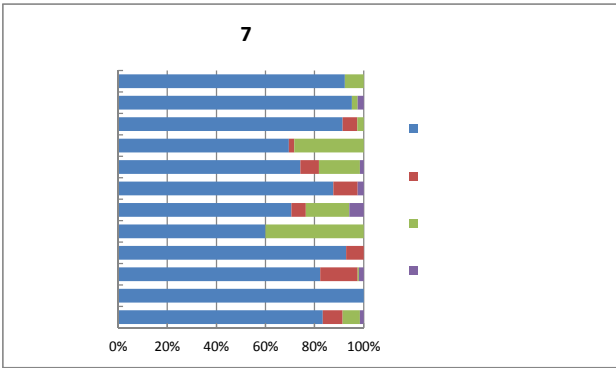
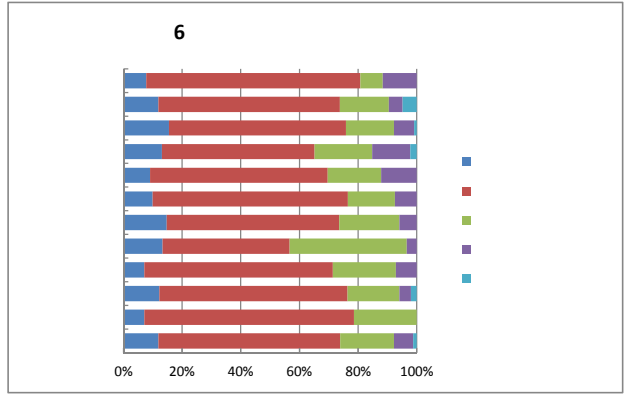
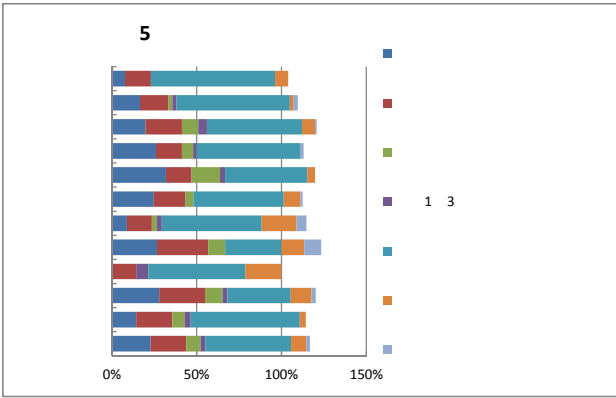
3
4
2012

	128	26	20.31
	186	42	22.58
	556	116	20.86
	219	46	21.00
	249	66	26.51
	256	81	31.64
	243	34	13.99
	88	30	34.09
	54	14	25.93
	513	204	39.77
	114	28	24.56
	2606	687	26.36

1

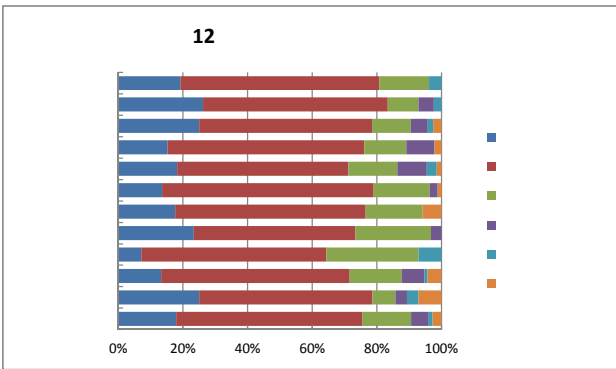






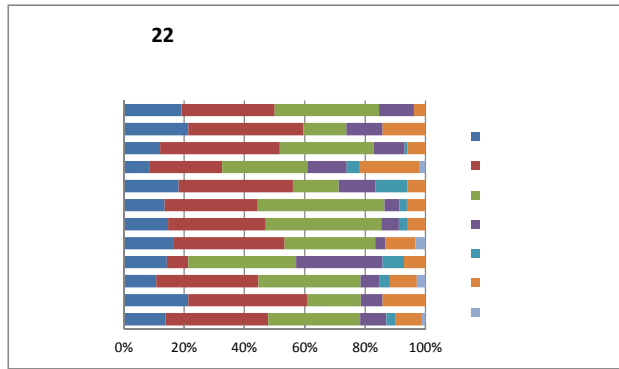
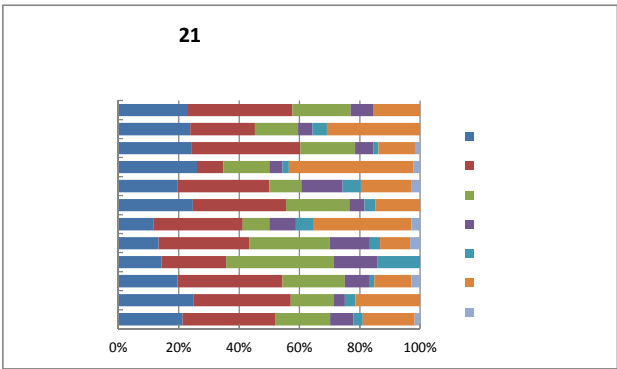
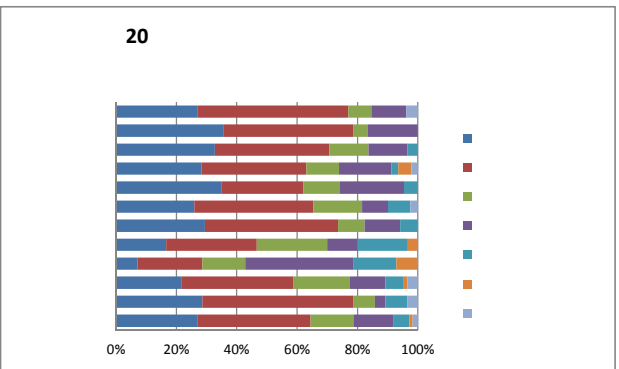
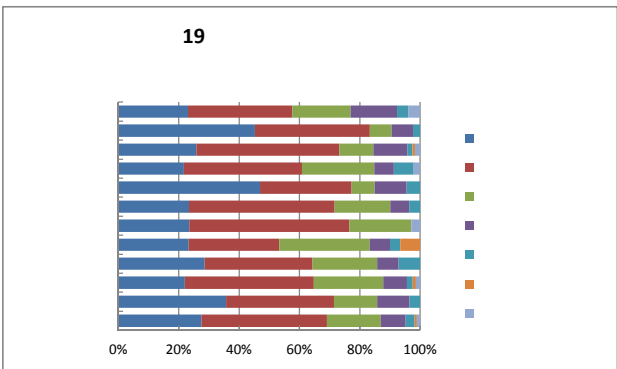
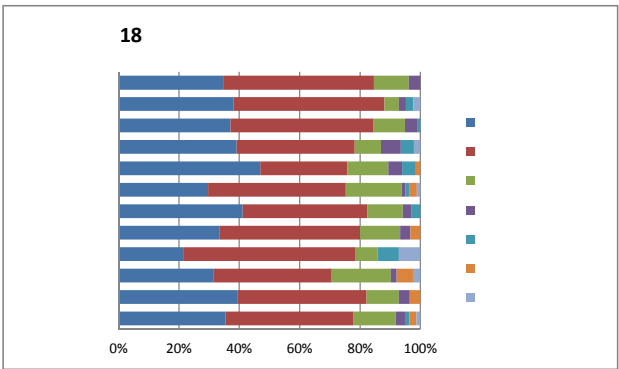
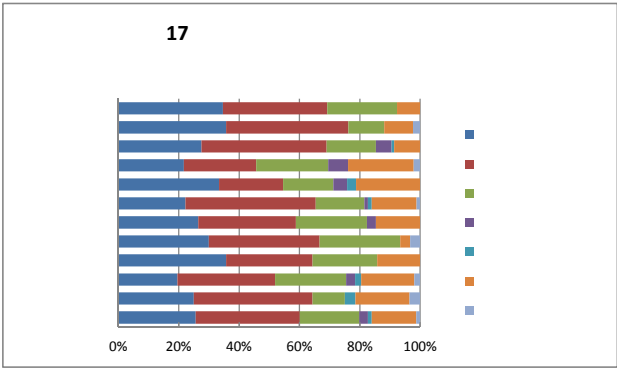
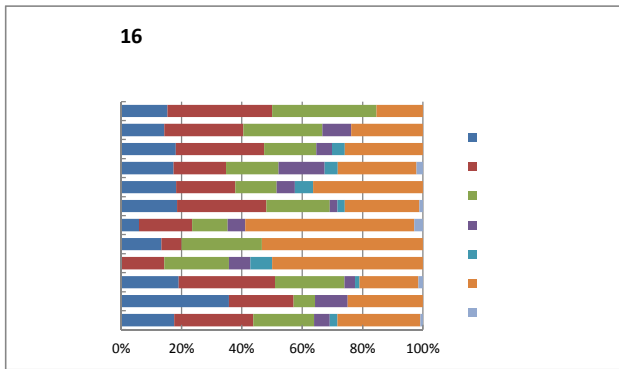
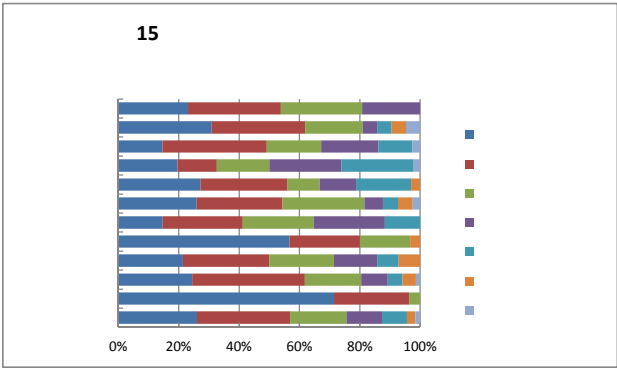
10 9

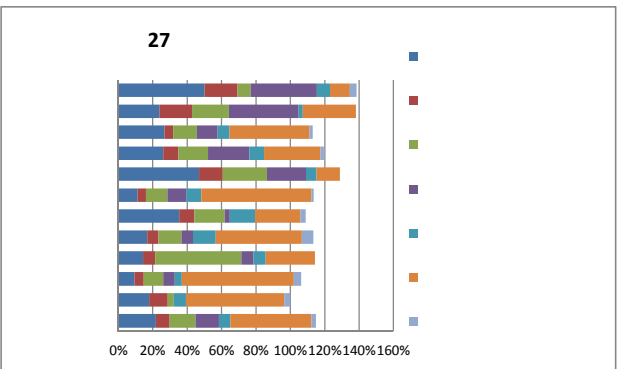
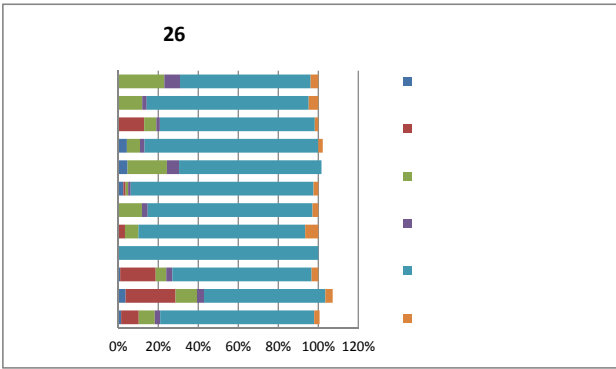
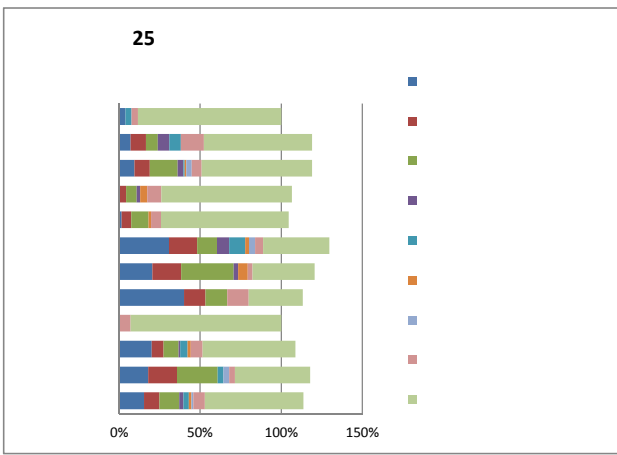
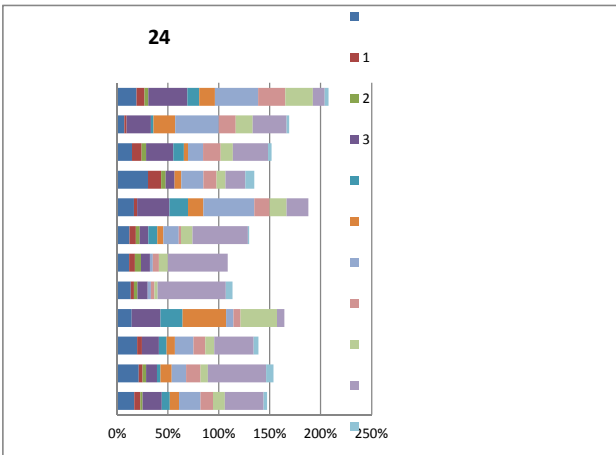
11



13 12

14





28

23

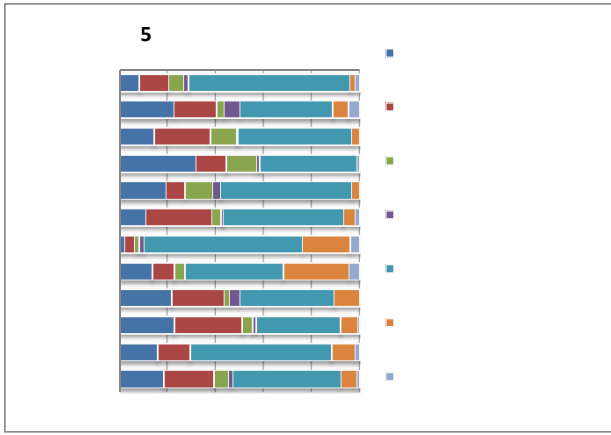
23

	(
	133	46	34.59
	169	57	33.73
	560	154	27.50
	234	71	30.34
	269	81	30.11
	230	96	41.74
	246	49	19.92
	101	20	19.80
	60	35	58.33
	542	300	55.35
	127	46	36.22
	2671	959	35.75

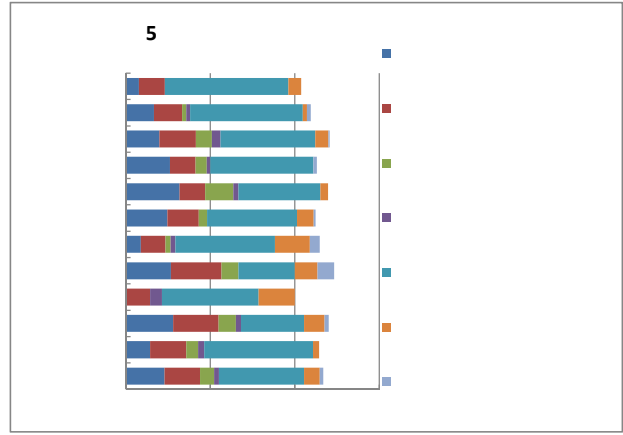
24

	128	26	20.31
	186	42	22.58
	556	116	20.86
	219	46	21.00
	249	66	26.51
	256	81	31.64
	243	34	13.99
	88	30	34.09
	54	14	25.93
	513	204	39.77
	114	28	24.56
	2606	687	26.36

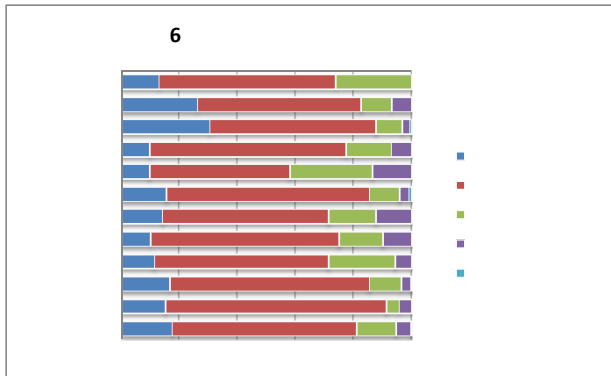
23



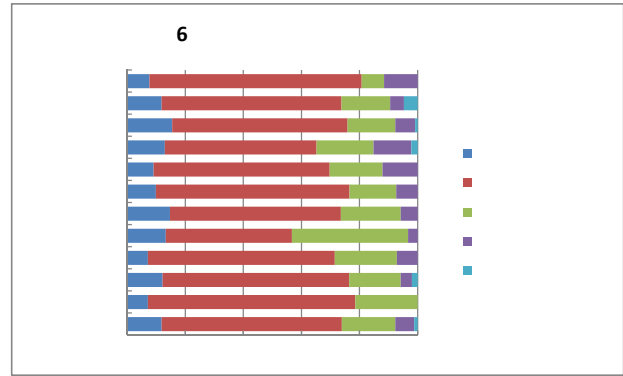
24



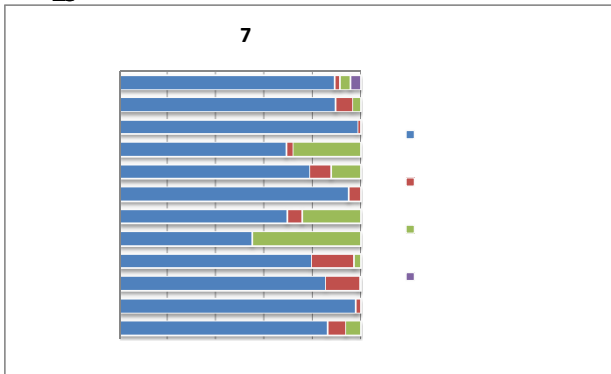
23



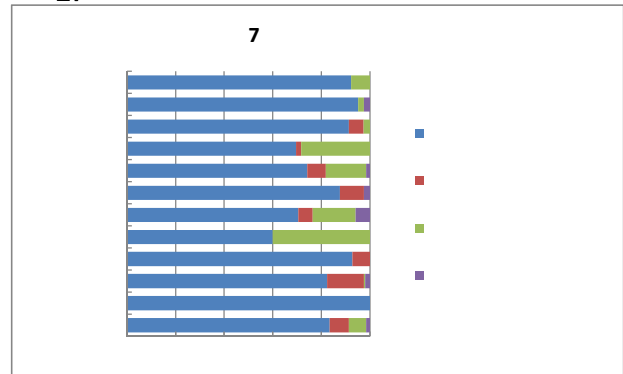
24



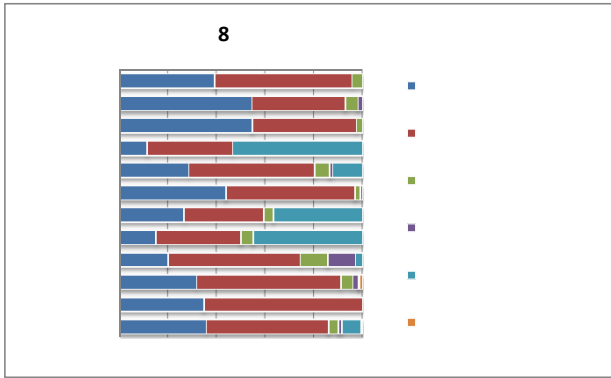
23



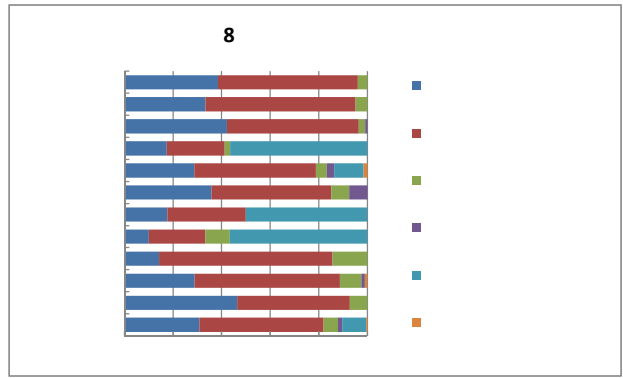
24



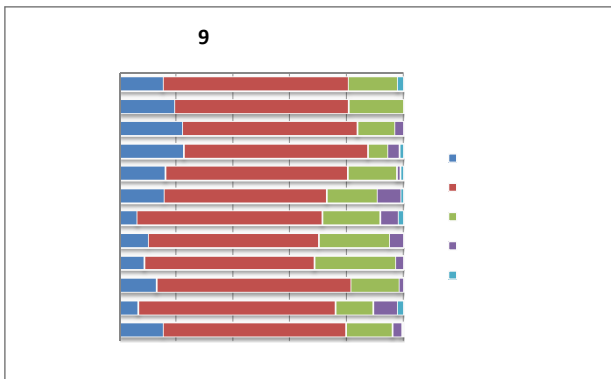
23



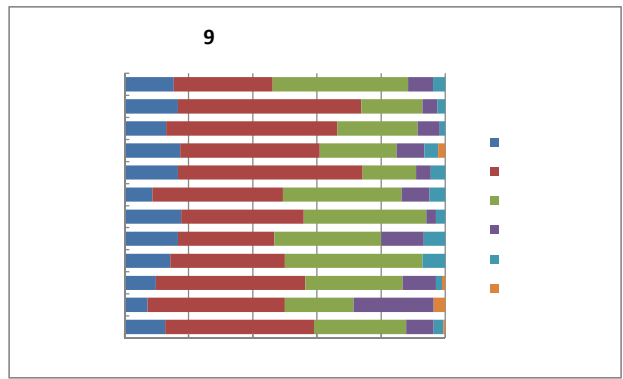
24



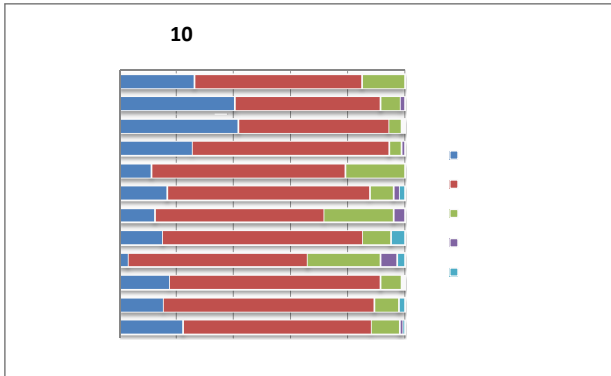
23



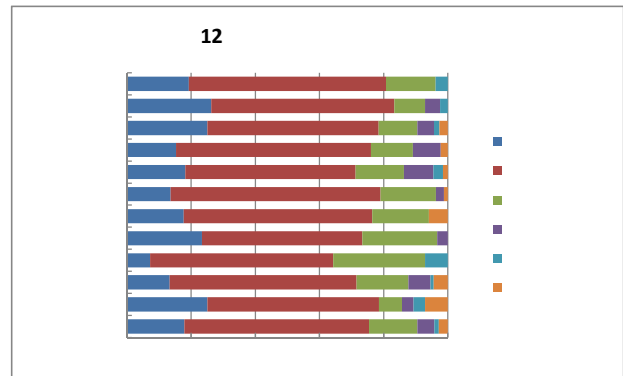
24



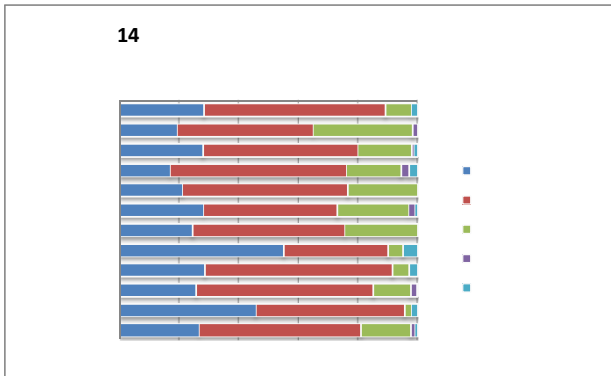
23



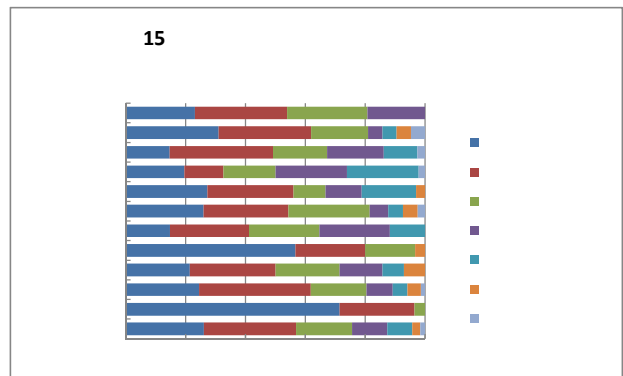
24



23



24

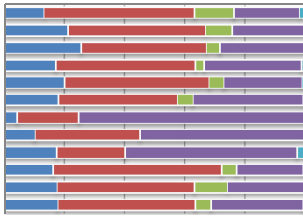


23

15

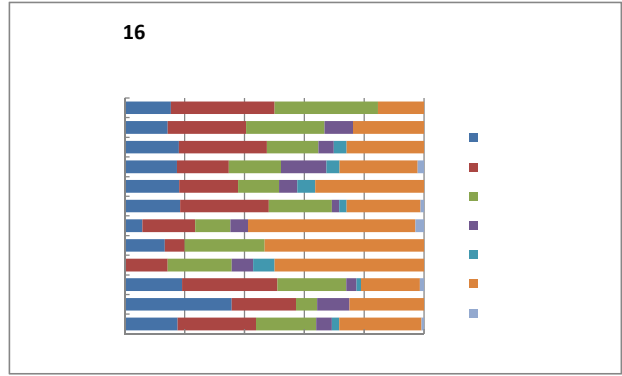
3

2



24

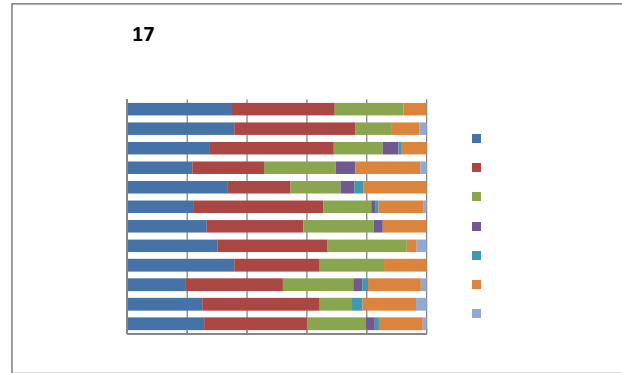
16



23

24

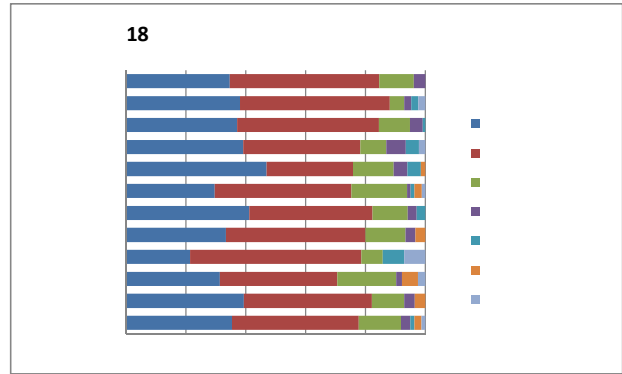
17



23

24

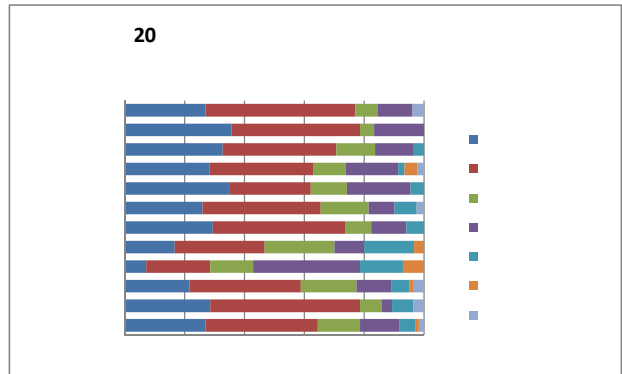
18



23

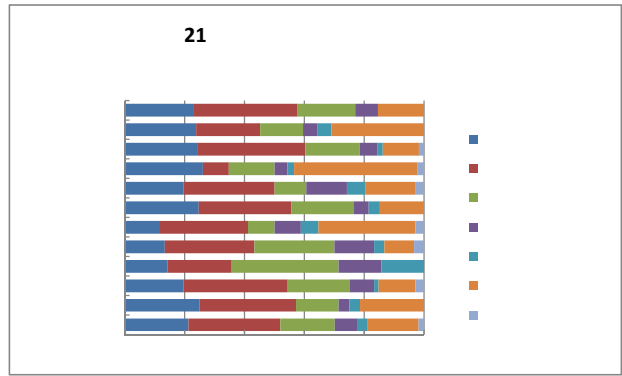
24

20



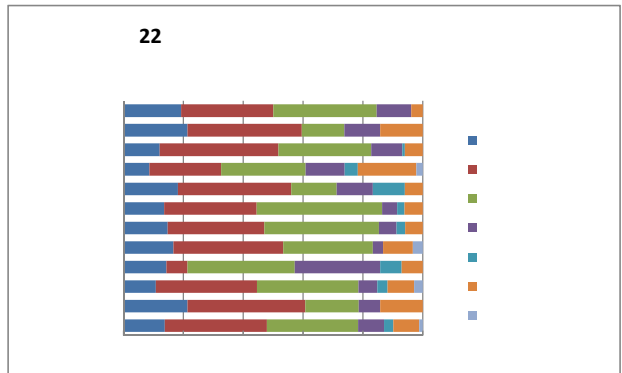
23

24



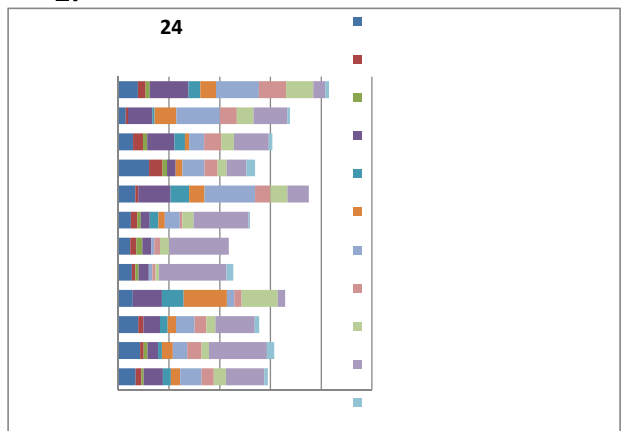
23

24



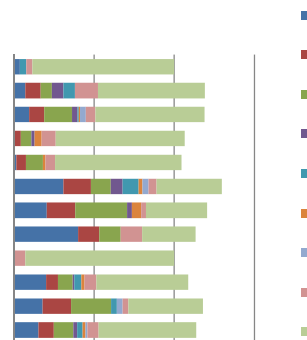
23

24

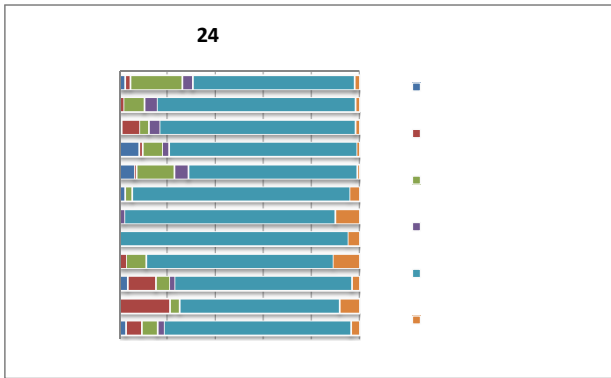


24

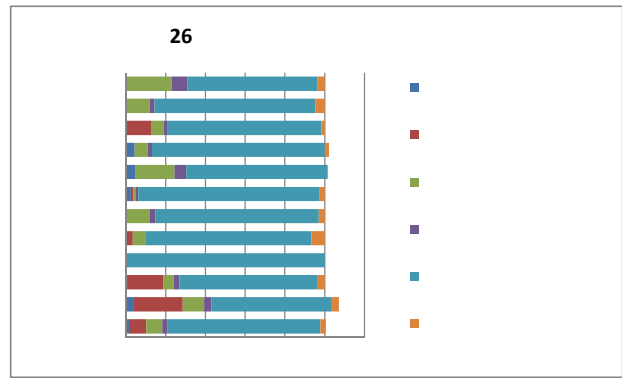
25



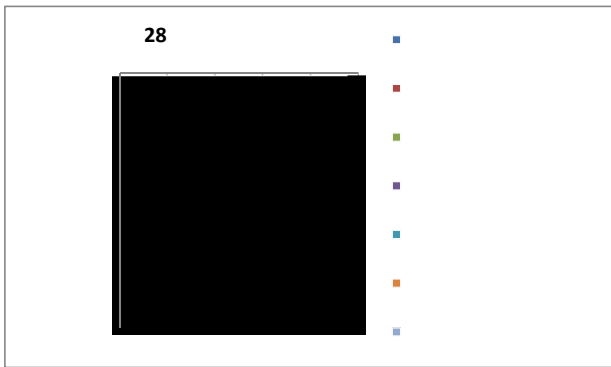
23



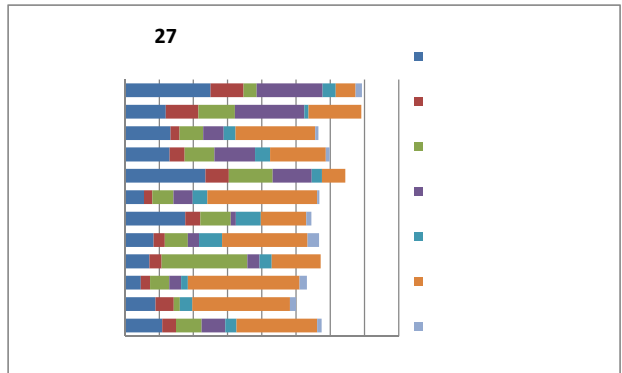
24



23



24



24

18

H PROSPECTS^R

3

- (1)
- (2)
- (3)

25 2 1

25 3 22

24

(1)

(2)

HP

(1)

(2)

(3)

17

- 1.
- 2.

- 1.
- 2.
- 3.
- 4.
- 5.

- 1.
- 2.
- 3.
- 4.
- 5.

17

()

- 1.
- 2.
- 3.
- 4.
- 5.
- 6.

1 3

- 1.
- 2.
- 3.
- 4.

- 1.
- 2.
- 3.

- 1.
- 2.
- 3.

- 4.
- 5.

- 1.
- 2.
- 3.
- 4.
- 5.

- 1.
- 2.
- 3.
- 4.
- 5.

- 1.
- 2.
- 3.
- 4.
- 5.
- 6.

- 1.
- 2.
- 3.
- 4.
- 5.
- 6.

- 1.
- 2.
- 3.
- 4.
- 5.
- 6.

- 1.
- 2.
- 3.
- 4.
- 5.
- 6.

WebCT

- 1.
- 2.
- 3.
- 4.
- 5.
- 6.

- 1.
- 2.
- 3.
- 4.
- 5.
- 6.

- 1.
- 2.
- 3.
- 4.
- 5.
- 6.

- 1.
- 2.
- 3.
- 4.
- 5.
- 6.

- 1.
2. 1
3. 2
4. 3
- 5.
- 6.
- 7.
- 8.

9.
10

24 **10.**

1.
2.
3.
4.
5.
6.
7.
8.

1.
2.
3.
4.
5.

1.
2.
3.
4.
5.
6.

()