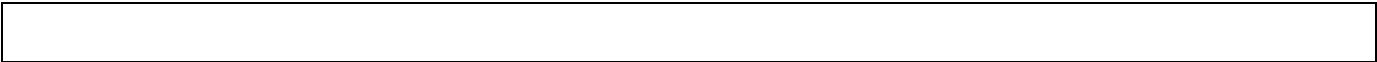
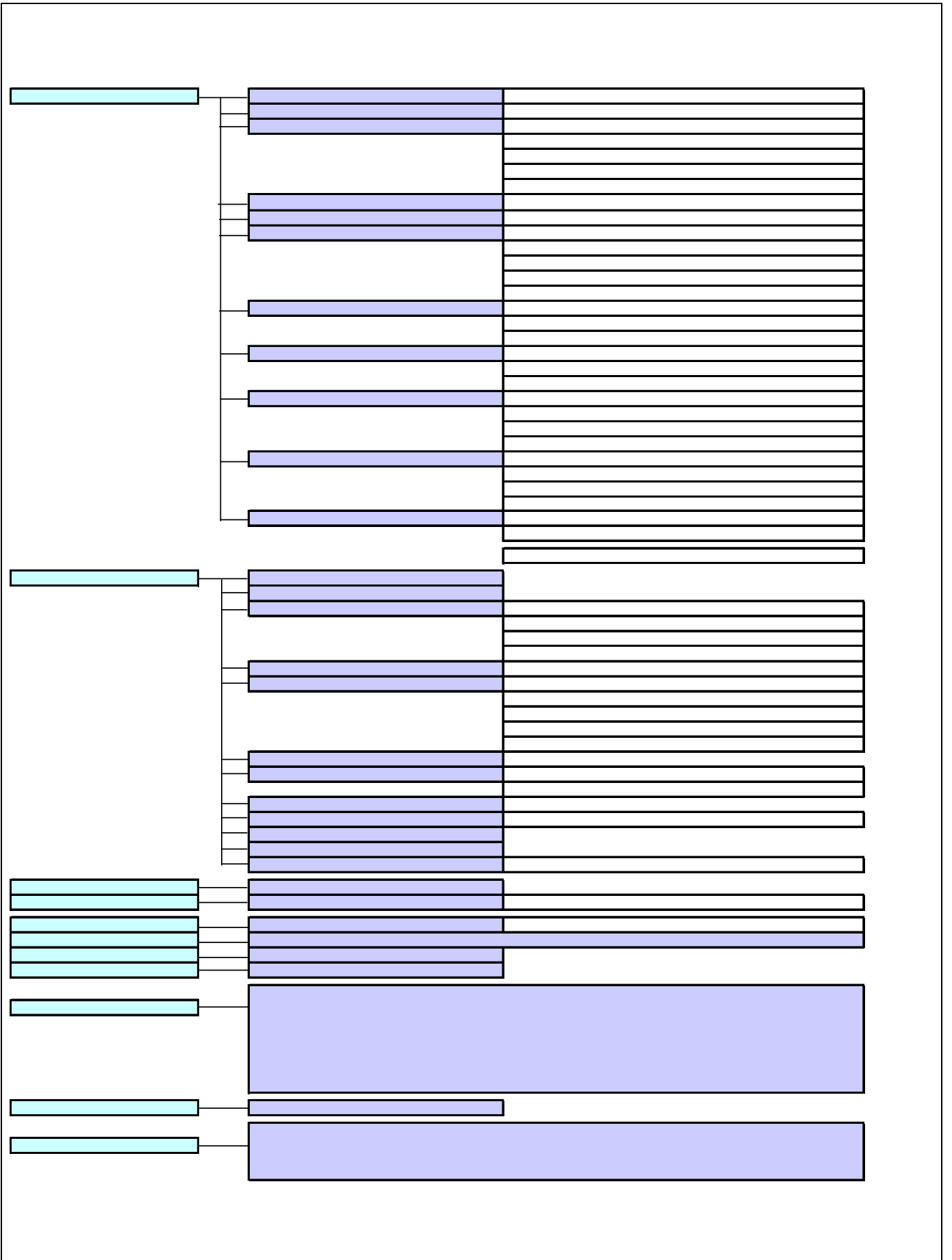




24					7	1	
	6	4	1	1,309		1,455	1,304
25							
28				3			
47							
57							
7				5			
11	50						
15					10		
16							
21							





--

(円)

	期首残高	当期増加額	当期減少額	期末残高
政府出資金	147,251,222,249	0	13,068,822	147,238,153,427

	16	17	18	19	20	21
	19,505	19,549	19,571	19,638	19,756	19,635
	11,028	11,074	11,060	11,048	11,097	10,990
	2,511	2,465	2,449	2,509	2,538	2,567
	1,774	1,776	1,756	1,749	1,783	1,763
	61	113	157	187	192	191
	4,131	4,121	4,149	4,145	4,146	4,124

			() 13 3) (18 3)

	16	17	18	19	20	21
	2, 910	3, 007	3, 062	3, 579	3, 770	3, 805
	1, 860	1, 843	1, 847	1, 832	1, 814	1, 803
	1, 050	1, 164	1, 215	1, 747	1, 956	2, 002
	3, 373	3, 792	3, 855	3, 863	3, 958	4, 494
	1, 237	1, 215	1, 209	1, 192	1, 168	1, 164
	0	158	155	247	307	363
	2, 136	2, 419	2, 491	2, 424	2, 483	2, 967

	165,992	165,992	0
	10,007	10,505	498
	1,818	1,818	0
	789	2,370	1,581
	1,303	4,417	3,114
	450	450	0
	164,114	168,919	4,805
	54,417	52,822	1,595
	107,586	113,466	5,880
	46	68	22
	2,065	2,563	498
	24,846	28,388	3,542
	270	512	242
	1,674	1,450	224
	55	101	46
	2,722	6,800	4,078
	374,040	391,722	17,682
	280,364	280,458	94
	181,904	177,106	4,798
	96,989	103,352	6,363
	41,449	39,545	1,904
	12,131	12,405	274
	1,818	1,818	0
	1,303	4,344	3,041
	24,846	26,004	1,158
	13,577	15,118	1,541
	23	26	3
	374,040	379,718	5,678

	362,170	374,232	12,062
	362,111	368,256	6,145
	326,825	328,312	1,487
	42,508	45,450	2,942
	60,941	62,439	1,498
	12,395	13,169	774
	820	1,025	205
	136,520	132,250	4,270
	73,641	73,979	338
	11,058	12,221	1,163
	2,863	2,955	92
	0	515	515
	21,365	24,253	2,888
	59	5,976	5,917
	362,369	383,774	21,405
	362,255	374,719	12,464
	164,930	161,879	3,051
	43,014	43,203	189
	7,077	7,168	91
	1,511	1,468	43
	107,586	114,696	7,110
	14,156	15,779	1,623
	1,214	2,202	988
	8,137	7,943	194
	202	324	122
	4,468	8,972	4,504
	2,095	2,329	234
	40	128	88
	1,711	2,408	697
	6,114	6,220	106
	114	9,055	8,941
	199	9,542	9,343
	429	3,788	3,359
	628	13,330	12,702

	370,153	390,753	20,600
	332,984	330,786	2,198
	24,379	31,021	6,642
	12,790	14,557	1,767
	0	14,389	14,389
	370,153	390,753	20,600
	355,954	370,152	14,198
	165,992	165,992	0
	54,417	52,779	1,638
	107,532	110,574	3,042
	16,163	15,965	198
	1,303	4,518	3,215
	8,683	12,123	3,440
	1,864	8,201	6,337
	12,525	19,151	6,626
	12,277	12,773	496
	248	6,378	6,130
	1,674	1,450	224