



11 6

17 12

2

15

4

2



18 10 17



.....	1
.....	2
.....	2
2 1 12
2 1 23
2 1 34
2 1 47
2 1 58
2 1 610
2 1 711
2 1 812
2 1 915
2 1 1018
.....18
2 1 1119
2 1 1221
2 1 1323
.....	25
.....	27
.....	27
.....	29
3 2 129
3 2 232
.....	40
3 3 140
3 3 245
3 3 347

3 3 4	48
3 3 5	49
3 3 6	50
3 3 7	50
	53
3 4 1	53
3 4 2	54
3 4 3	56
3 4 4	57
	59
	59
	63
4 2 1 “	63
4 2 2	65
4 2 3	65
	66
	69
	70
4 5 1	70
4 5 2	71
4 5 3	71
	72
	72
	75
5 2 1	75
5 2 2	80
5 2 3	87

	2	88
5 3 1		88
5 3 2		89
5 3 3		89
		91
5 4 1		91
5 4 2		96
		98
		98
		100
		103
		109
		111
	23	112
		112
		112
		113
		115
		115
		118

3
3 4
4 5
5
5
5



,

2007

24 3 1

1500

i

2 1 2



4

7

20

2

1

4

3

5

10

3

3

2 1 3

3

1

4

1

M

M

M

3

2

1

2

Li+

16-64

2



6

2 1 4

4

0

2 1 5



3

4

3

HIV

HIV

2 1 6

60

1

60

1

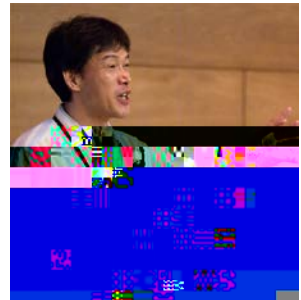
1

2

DNA

DNA

2 1 7



4

1000

Stanford Linear Accelerator Center,

SLAC

SLAC

SLAC

4

2 1 8



2

1

1

2

1

3 7

14

2 1 9



2003 4

2002

6

2

ESS (English

Speaking Society)

2

‘gardening’

ESS

all English

ESS

1

12

1990

2

Dr. Krieger

2008

10

12

18

1990

Dr. Krieger

University of Arizona

(TA)

Dr. Bernstein

(Ph.D)

Reading

1995

Monash University

(Ph.D)

2002

2

1990

2 1 10

3

10

18

2 1 11

II



2 1 12

1

6

4

3

20

22

2 1 13



HDI

	HDI
1	0.943
2	0.929

GGGI

	GGGI
1	0.853
2	0.840

2

(UNDP) 2011

HDI (Human Development Index)

HDI

2011

182

12

Gender Gap Report 2011
Index)

The Global
GGGI(Global Gender Gap

135

98

1

11 6

5

17 12

2

12

2020

30

3

2020

30

2008 4

3

2020

1986	1997	1999	2008
------	------	------	------

_____ (

) 1992					1995	
	1999	2001	2002	2005	2008	2010

					1				
		1	6						1
1									
			1	5			1	10	
									1
24	1		150						
						1			
			93						

_____ 1947 2008 2010

_____ 2015 3 31 2005 2008 2009 2011

10

5

101

DV _____
2001 2004 2008

2004 2008

3 2 2

11 6 23 78

3 22 12 17

4

23 8 19

19 4 1

20 4 8

12 5 19

(gender)

(sex)

(gender)

3 3 1

...

(sex difference)

(gender difference)

2

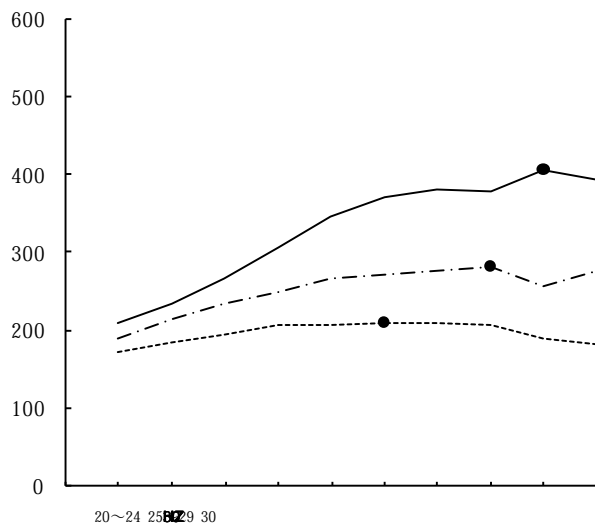
1

47

3 4

ポイント





1

22

22 6

6

[1]

[2]

[3]

[4]

[5]

		395.3	289.1
		218.2	190.4
		252.8	221.8
		309.9	252.8
		373.5	285.5
		454.3	314.4
		507.7	341.7
		523.8	352.7
		512.4	345.4
		402.7	242.9
		446.2	216.3
		41.0	42.9
		12.5	13.9
		274.7	199.4
		210.3	172.5
		234.8	185.1
		266.9	194.1
		307.0	208.3
		345.6	208.7
		372.4	210.4
		381.3	210.0
		380.1	208.9
		406.4	189.4
		395.2	181.4

()

1970

!! 2

PINK

T

1950

/

2

3 3 3

A

A

A

!

ポイント

3 3 4

3 3 3

3

4

socialization

3 3 5
3 3 4

5

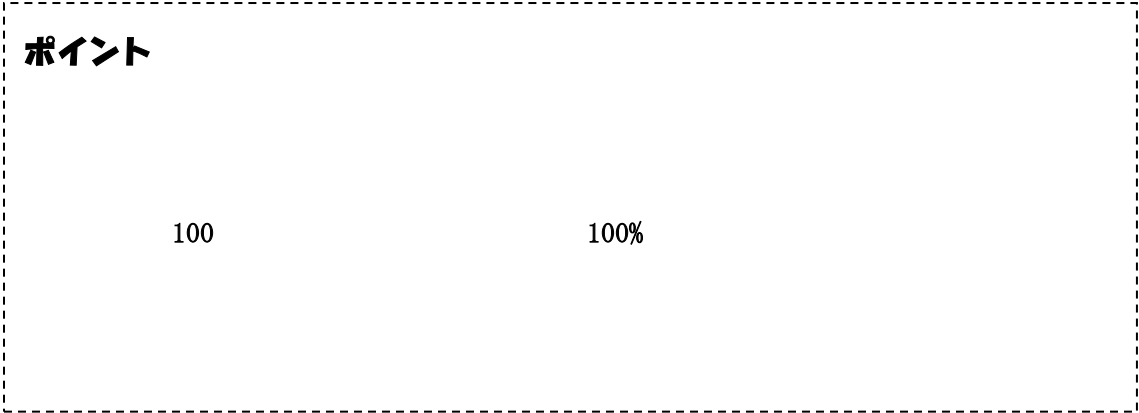
!

100

100

/

/



3 3 6

Disorders

Gender Identity

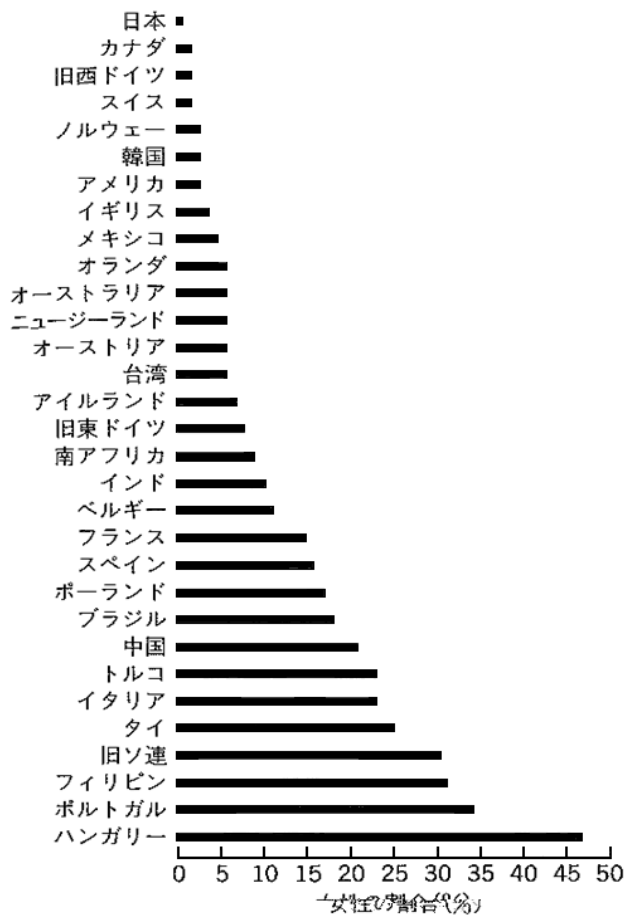
Gender Identity

3 3 7

(4)

Science, 263, 1468 (1998)

vol.72 2002



(5)

2007,

p. 32

, 2002

3 4 1

18

3 4 2

1950

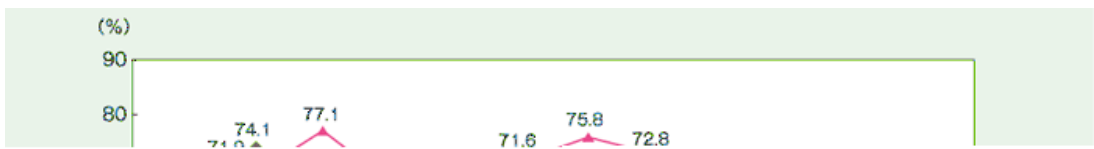
1955

74.9

1990

80

M



2

23

70

80

1947

49

4

(

)

60

2

70

2

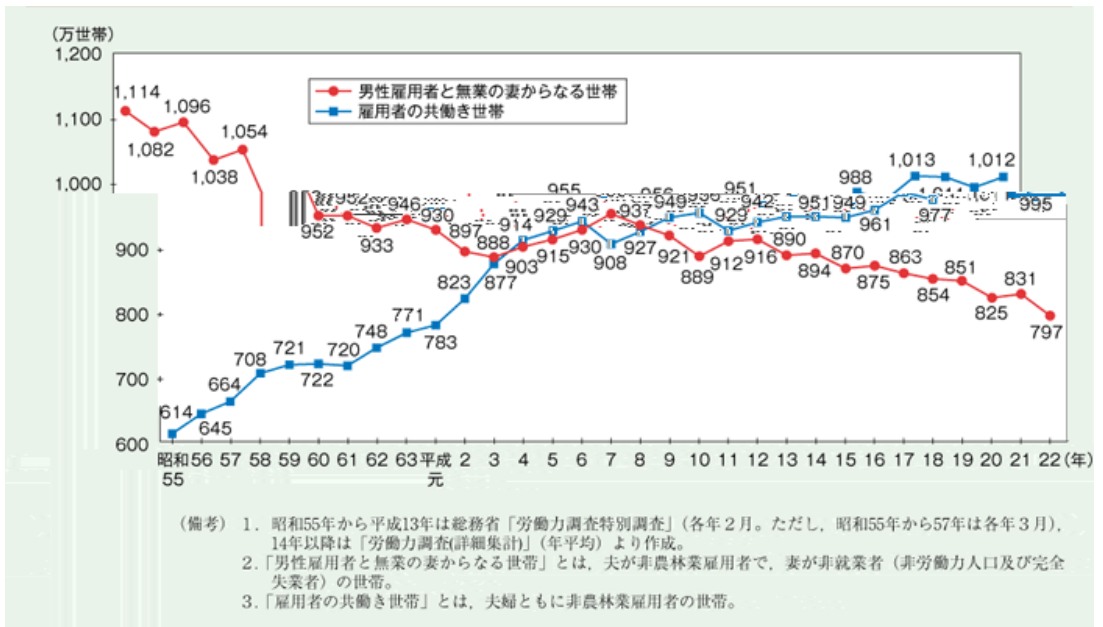
M

M

20

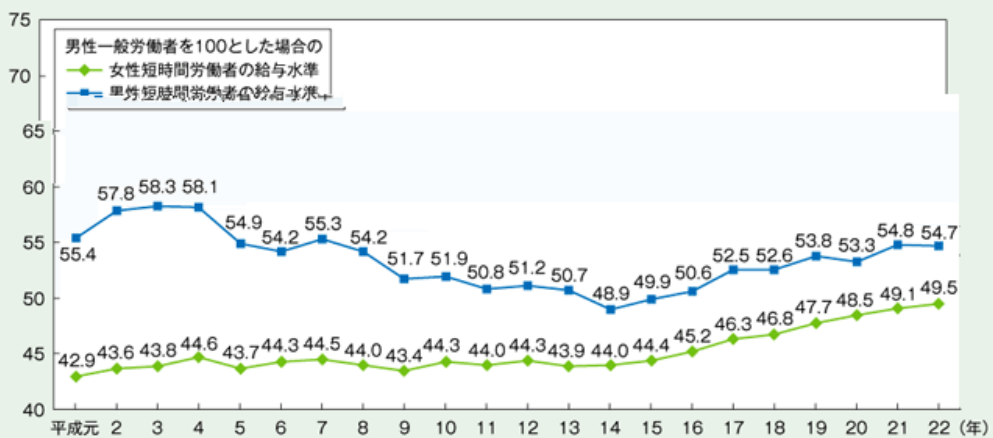
30

M



3

23



(備考) 1. 厚生労働省「賃金構造基本統計調査」より作成。
 2. 男性一般労働者の1時間当たり平均所定内給与額を100として、各区分の1時間当たり平均所定内給与額の水
 準を算出したものである。

4

23

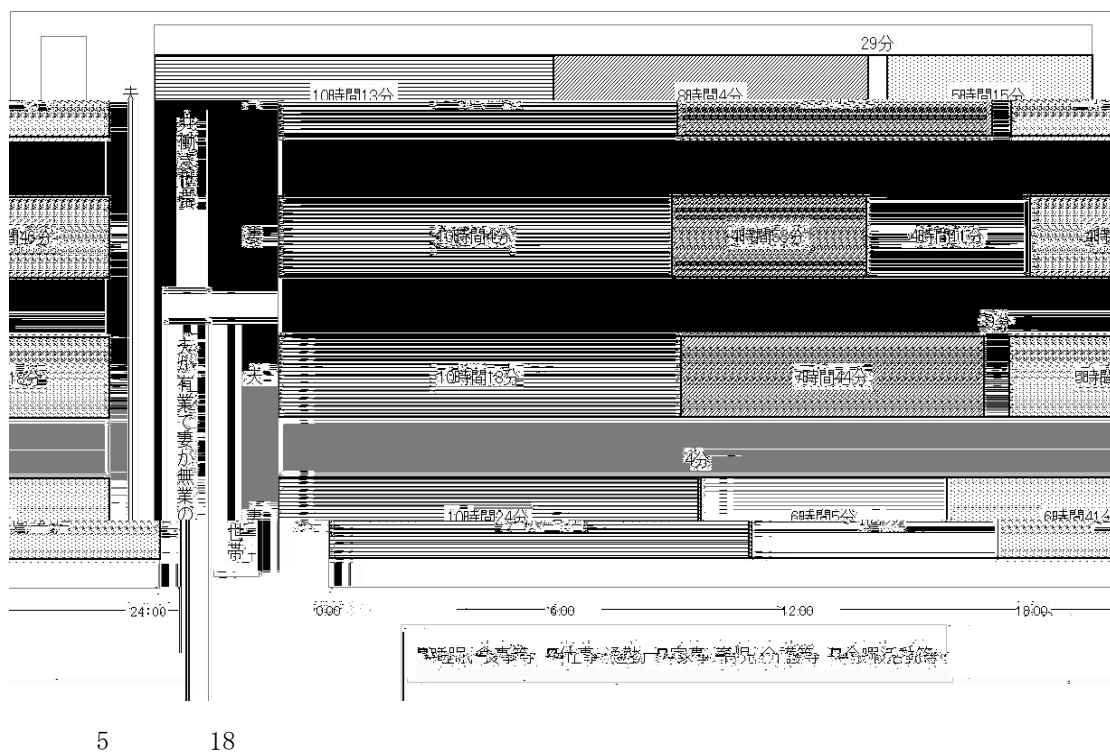
3 4 3

(ILO)

3 2

5

3 4 4



3

40

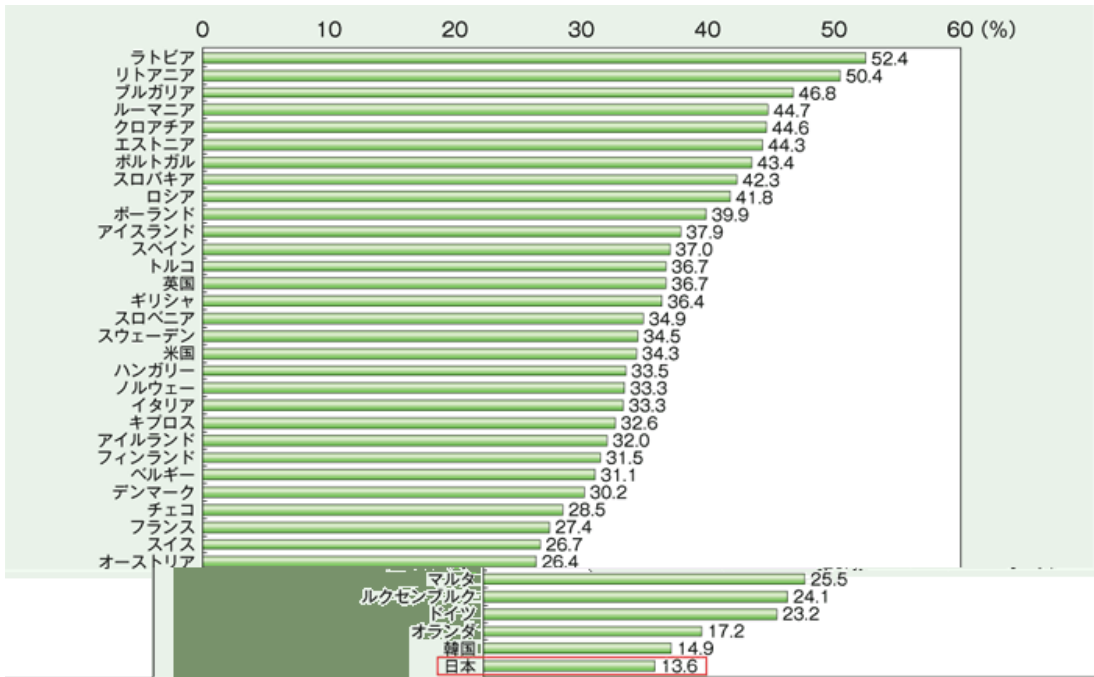


58

5.9%

1

23



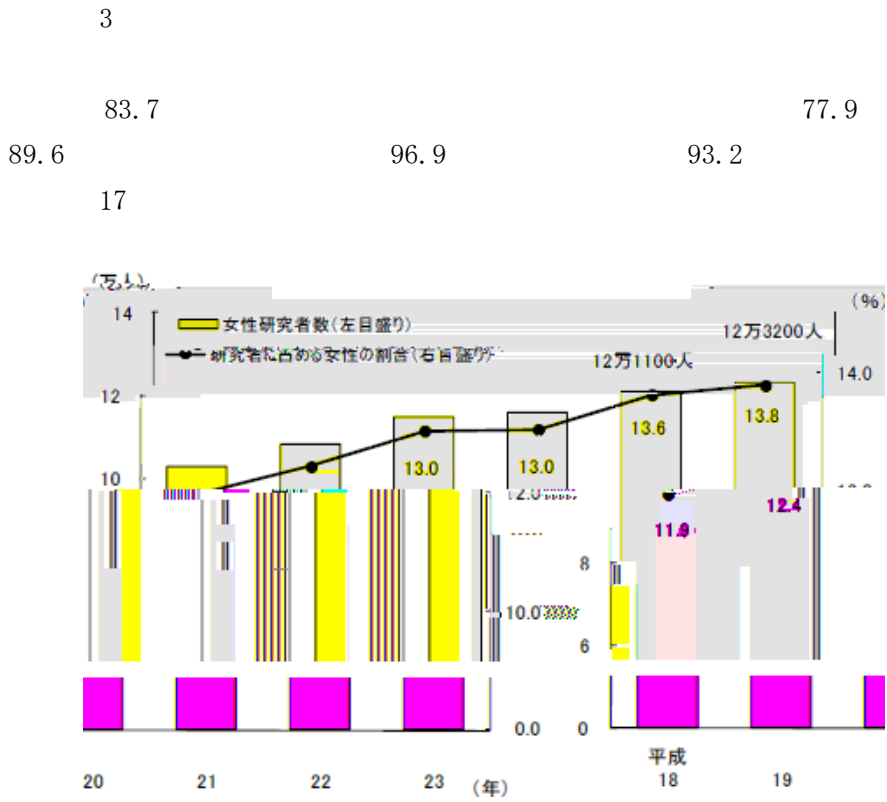
※キプロス、ロシア、中国は
OECDのデータが2014年
3月31日現在。
||| 国別の雇用者数
(平成15年時点の数値)

(備考) 1. EU諸国等の値は、EU (Eurostat) 及び作成・提供値を含む。72ヶ国スタンダード、OECD
の2008年(平成20年)と2017年(平成29年)の数値(18.7%)と2015年(平成27年)の数値(16.5%)
を比較し、オランダは2003年(平成15年)、他の国は2007年(平成19年)時点。
2. 日本の数値は、総務省計量部「平成22年科学技術研究調査報告書」に基づき、(平成22)
3. 米国の数値は、国立科学財団 (NSF) の「Science and Engineering Indicators 2006」
の「科学者 (Scientists) における女性割合」の「社会科学を含む」で2003
技術者 (engineers) 3を含む場合、全体に占める女性割合を「技術者割合」(27.0%)

6

23

6



7

23

1

2

()

()

3

31

	()	()	()	(%)	(%)
	1,550	119	1,431	7.7	92.3
	75,722	7,085	68,637	9.4	90.6

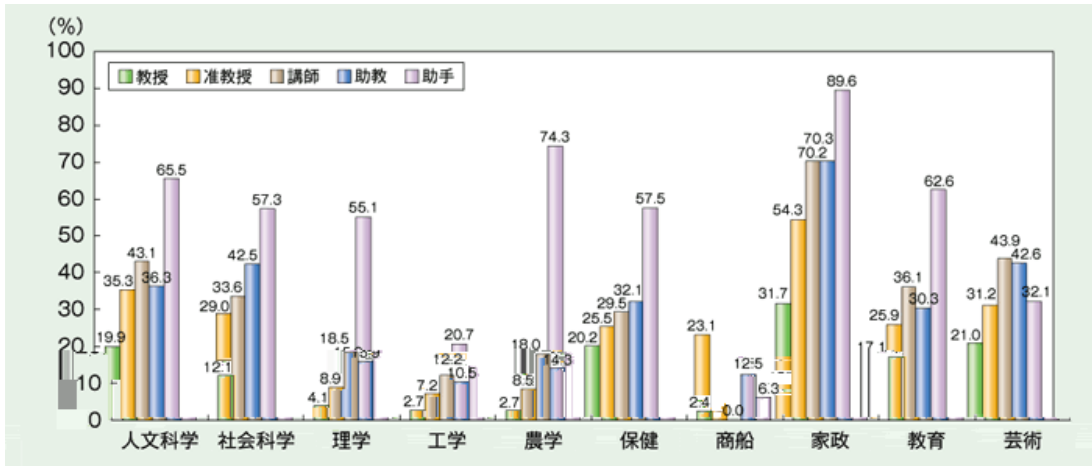
5

23

() (1)

1,550

(2)

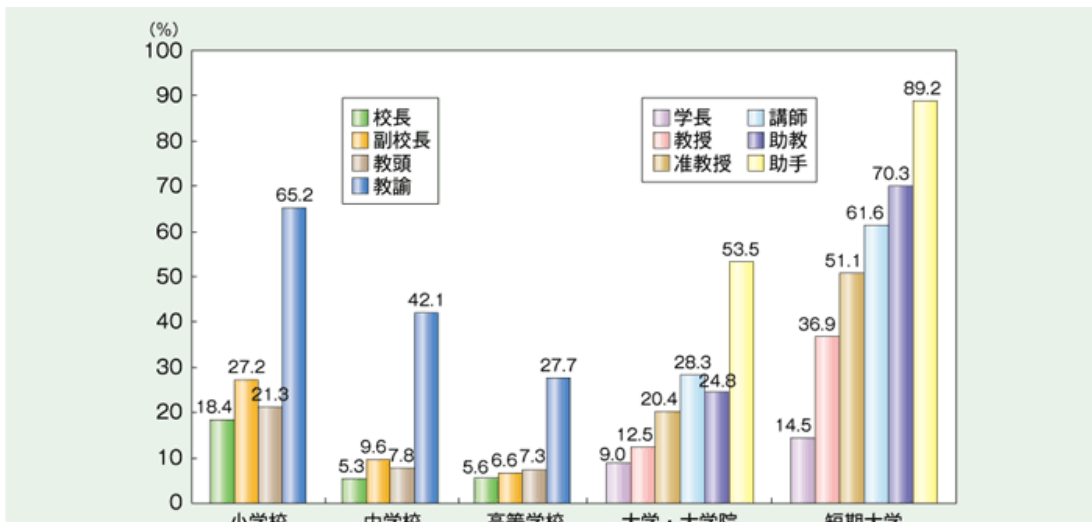


8

23

22

6

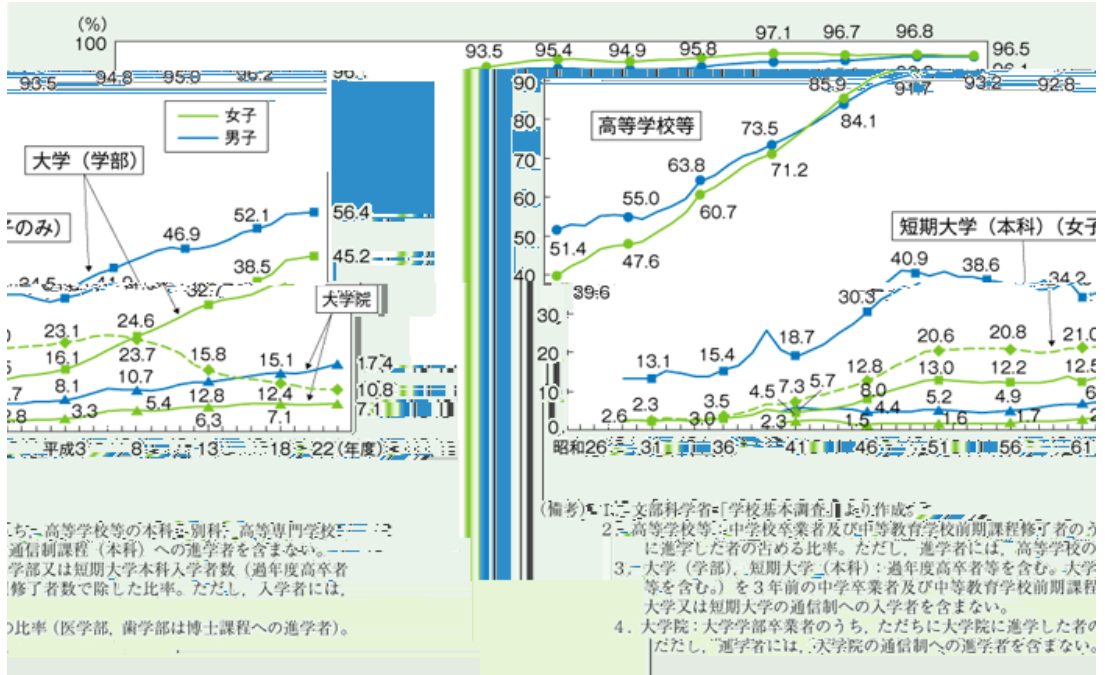


9

23

22

96.5 96.1
 56.4 45.2
 10.8
 56.0
 22 17.4 7.1



10 23

66.5

3 10.9

4 2 1 “

1970

“

(<http://www.scj.go.jp/index.html>)

24 1949

1975

1994 5 26

118

()

1996
for the Improvement of Conditions of Women Scientists)

(JAICOWS: Japanese Association

JAICOWS 17 2000

(1)

(2)

(3)

(4)

(5)

(6)

(7)

(8)

2012
1
2
3
4
5
2000
17
10 10
1990
1 12 (1981) 210 1 (0.5%)
20 (2005) 42 (20%)
1982 84
30 40
40

4 2 2

4 2 3

21

2000 12

1999 6

2000 6 8

132

19

12

29

2002 7

2003

21

2005

2007 9

2008 7

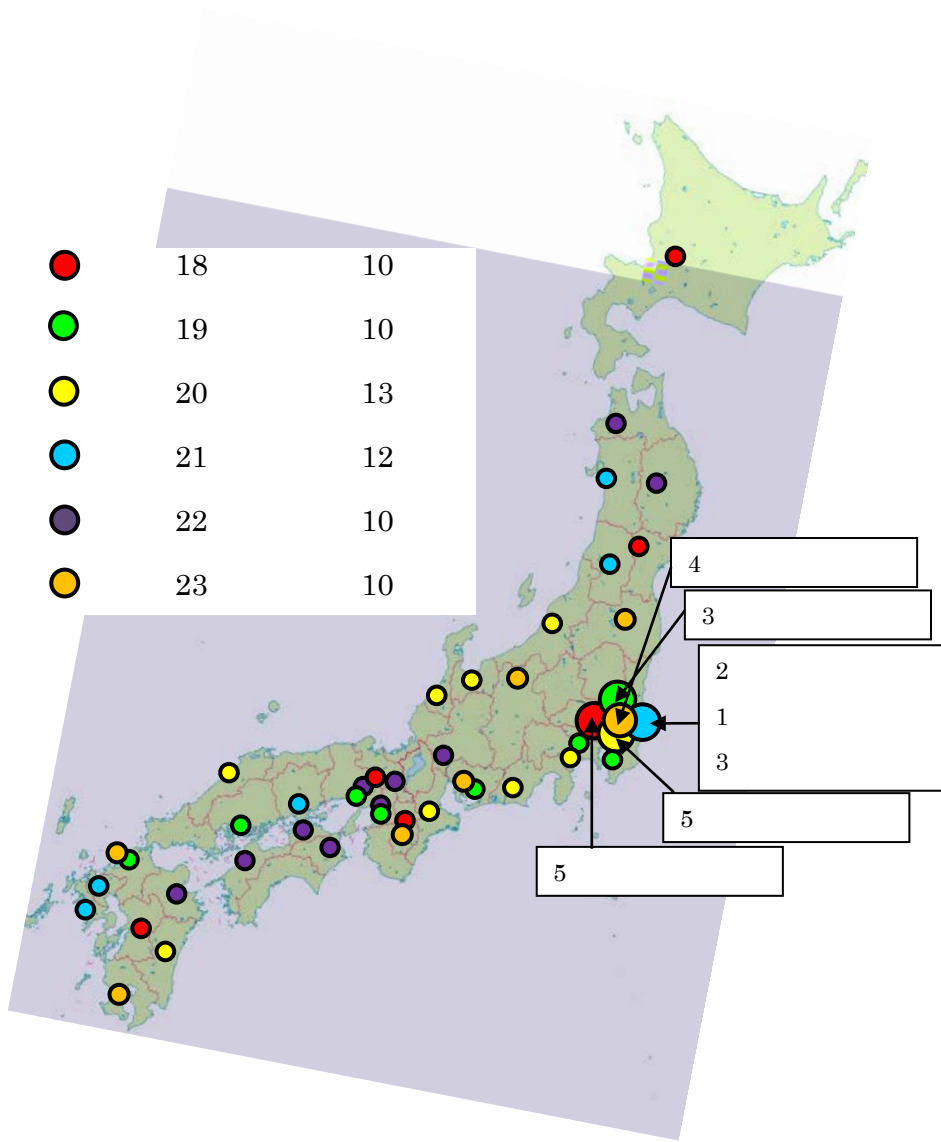
21

	in
	()
()	

22

	AWA OUR
	Mastery for Service

23



	2.88%	1	2.00%
	5.50%	5	10.00%
	48.47%	18	36.00%
	9.86%	6	12.00%
	16.32%	8	16.00%
	7.32%	7	14.00%
	9.64%	5	10.00%

6

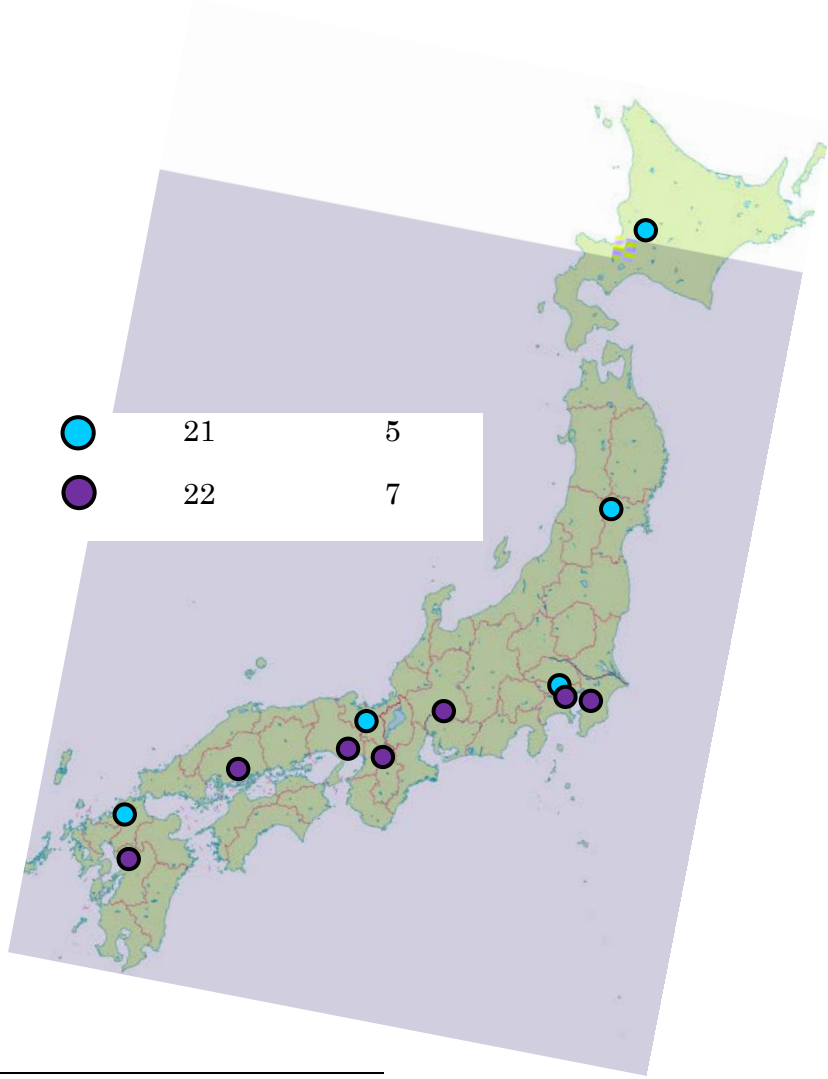
23

,

21

	for 2013

22



4 5 1

1970

80

1988

1970

1960

70

4 5 2

1974

1973

1970

4 5 3



17

12 27

18 1 4

18 4

3

Equality platform

CAPWR(Career Advancement Project for Women Researchers)

18 10

19 2

19 2

CAPWR

Mika Tajima

19 5

21



19

22

18

9.0

22

11.5

20 4

2

(CAPWR

5 2 1

(1)

(2)

(3)

(1)

1

6

23

(2)

"

12 13

23

3

20

B

3 4

3 4

TA



1

19 12

21

1

3

23

(3)

18

9.0

20 5

15 30 30 3 20

23

12

22 3

10 16 50

22 26

5 2 2

18

	18 10 17
	19 2 1
CAPWR	19 2 8

19

19	19 5 18
19 21	

	19	5	21
	19	7	1
	19	6	
	19	6	27
	19	9	25
	19	10	15
19	22	4	
	19	11	20
	19	11	
1	19	12	4
1 CAPWR	20	1	7
	20	2	4
	20	3	17
	20	3	
	2007	19	
	20	3	

20

	20	4	1
(CAPWR)	20	4	14
(20	5	16
2	20	5	20
	20	8	
	20	8	

			20	10	1
2	CAPWR		20	11	12
(DV)		DV			
6	CAPWR		20	12	17
3	CAPWR		21	1	21
4	5	CAPWR	21	3	4
	2008	20	21	3	

21

			21	8	
			21	8	7
7	CAPWR		21	10	19
		2	21	10	20
8	CAPWR		21	10	23
10	CAPWR	1	21	11	10
1			21	12	21
3					
22			21	12	22
		4			
			21	12	
9	CAPWR		22	1	12
1			22	1	15

2009	21	22	3
21	19	22	3

22

2		22	4	12	
1	3	22	4	21	
		22	5	6	
	2010	22	6	9	
1		22	7	9	
	4	6	22	7	20
		22	7	21	
		8	27		
	2010	22	8	8	
		22	8	10	
		22	8	19	
		10	20		
		22	9	1	
		22	9	6	
		11	1		
		22	9	14	
		10	29		
		22	9	22	
		10	20		
	7	9	22	10	19
23		22	10	19	
	4				
2					

4	22 10 19
	22 11 15 23 1 14
	22 12
	22 12 17
	22 12 24 23 1 6
	22 12 25
1	23 1 1
10 12	23 1 18
2	23 1 24
2	23 2 1
	23 2 8 3 31
27 5 23 3 1 23 3 8	23 3 1 8
3	23 3 1
	23 3 12 13
	23 3 17
22	23 3
	23 3 28 4 5

23

1	23 4 1
1	23 4 1
1	23 4 1 9 30
1 3	23 4 19
	23 5 2 7 1
	23 5 26
	23 5 26
1	23 6 1
23 1	23 6 1
	23 6 28 9 2
4 6	23 7 19
2011	23 8 8 8 9
	23 7 21 8 31
4	23 9 10
5 ! !	23 9 11
1	23 10 1
	23 10 1 24 3 31
7 9	23 10 18

5	23 10 18
2	23 10 25
24 4 2	23 11 22
	23 12 17
	23 12 24
	23 12 26 1 6
10 12	23 1 17
6	24 2 16
7	24 2 21
	24 2
8	24 3 19 21
	24 3 22
	24 3 30
23	24 3
	24 3 26 4 6

5 2 3

23 4

()

1

- (1)
- (2)
- (3)
- (4)
- (5)

2

19

19

21

22

2

5 3 1

5-1

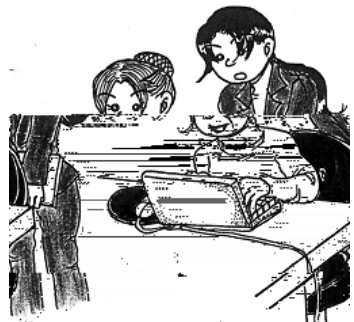
2

3

5-2-1

11.5

21



5 3 2

22

10.0

21 (3.3)

26

3

5 3 3



5 4 1

() 23

No.

56.64 cm 264.m 27 T64.l S8 490 9264.1 76 56.64 cm 264.m 048 21

17						
18					SCHLARB HANS MICHAEL	
19						
20						
21)	(
22						

23						
24						
25			B			
26						
27						

28			<p>Japanese Society and Gender Issues</p>	<p>By taking this course, students will</p> <p>Gain understanding of gender equality issues in the Japanese society: gender concept related to a household, role divisions in a workplace, changes of policies in the education system, and gender related social issues.</p> <p>Learn to critically examine the way Japanese women/men have been represented socially and historically, and its reality</p> <p>Gain basic understanding of feminist theories in the context of Japanese society</p> <p>Covered topics : feminist theories, gender equality issues in family relations (domestic and international marriage, children's right), education, workplace, and current issues such as stalking, sexual harassment, reproductive rights, and gender representation in mass media.</p>		HUSA
29						

5 4 2

(

)

23

No.						
1						
2			-	-		
3			-	-		
4			-	-		
5				A		

6						
7						
8						
9						



7 1874 7

15 1882

26 1893

31 1898

41 1908 7 1

18 1943

10 17

20 1887 12 6

1

15

20 23

23 44

15

20 1945 3 31

20 1945 4 1

20 1945 3 28

8 1875

41 1908

4 1929 4 1

2

25 58

24 1949 5 31

24 6 15 1 1455

2732 162

24 6 27 1279 120

2

24 7 18 1

1 1304 86

27 3 31

255 208 109 38

28 1953

28 5 31 1
79 2 1 1

35

112

--	--	--	--	--

(3)

23 5

112

(4)

31 3
34 3
37 3

38 5 20

“Studies on Amphidiploids and Diplo-tetraploid Hybrids in Brown Frogs”

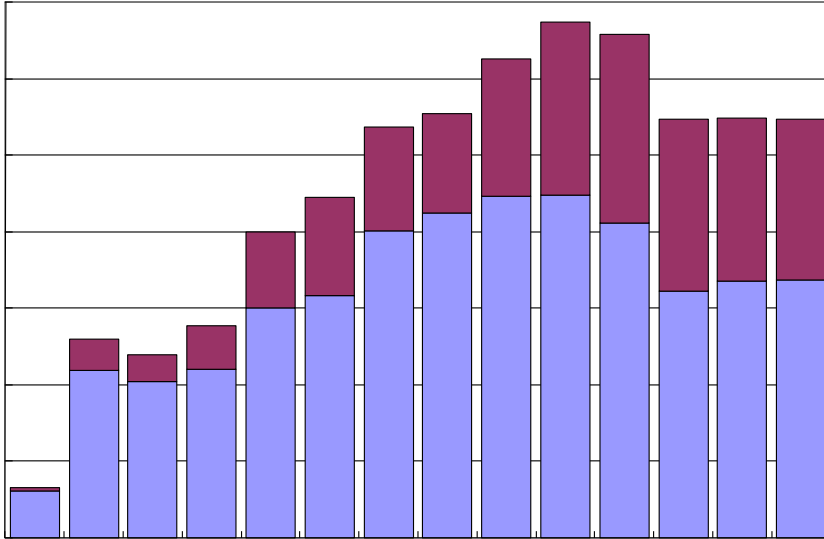
47 3 1 7 3 31
7 5 23

(5)

28 23 5 1,082
39

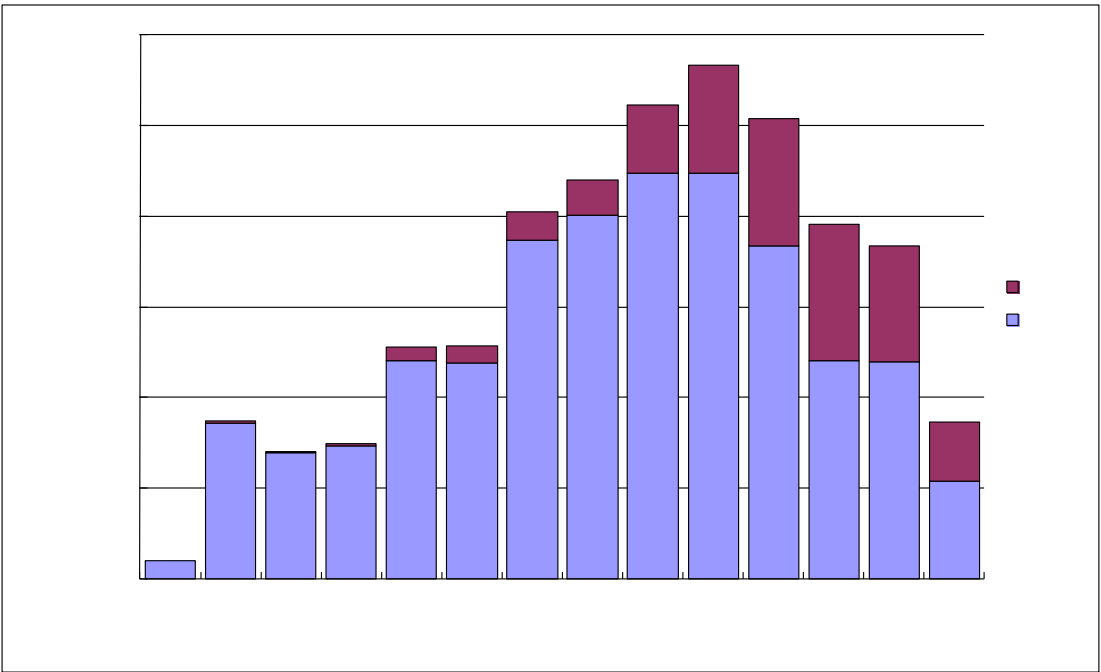
(1)

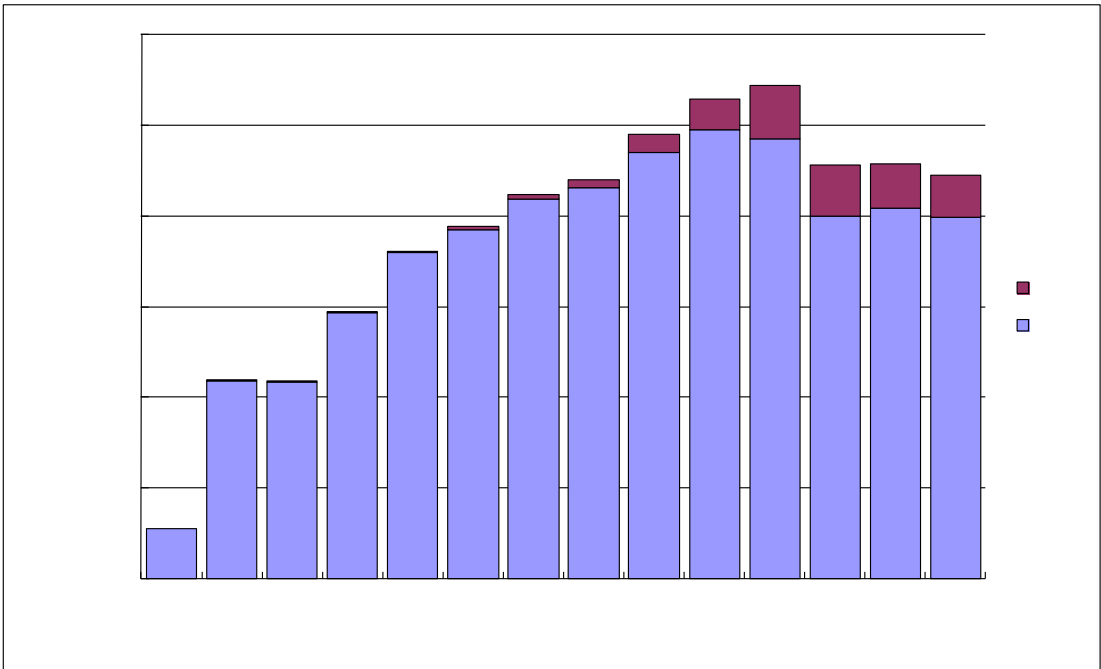
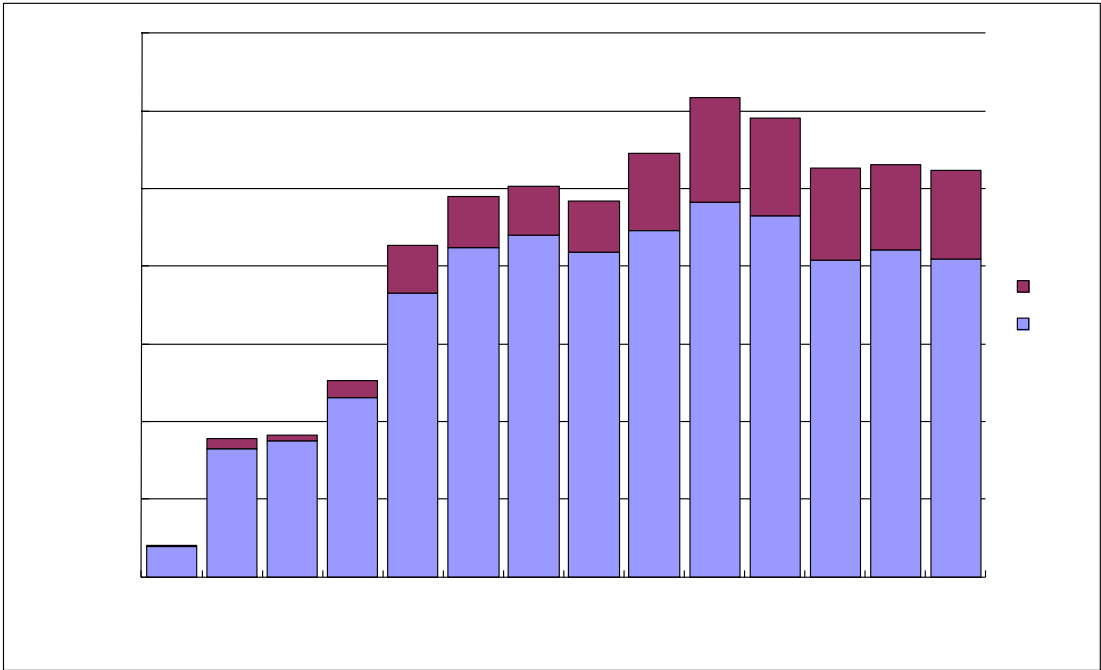
24 1949

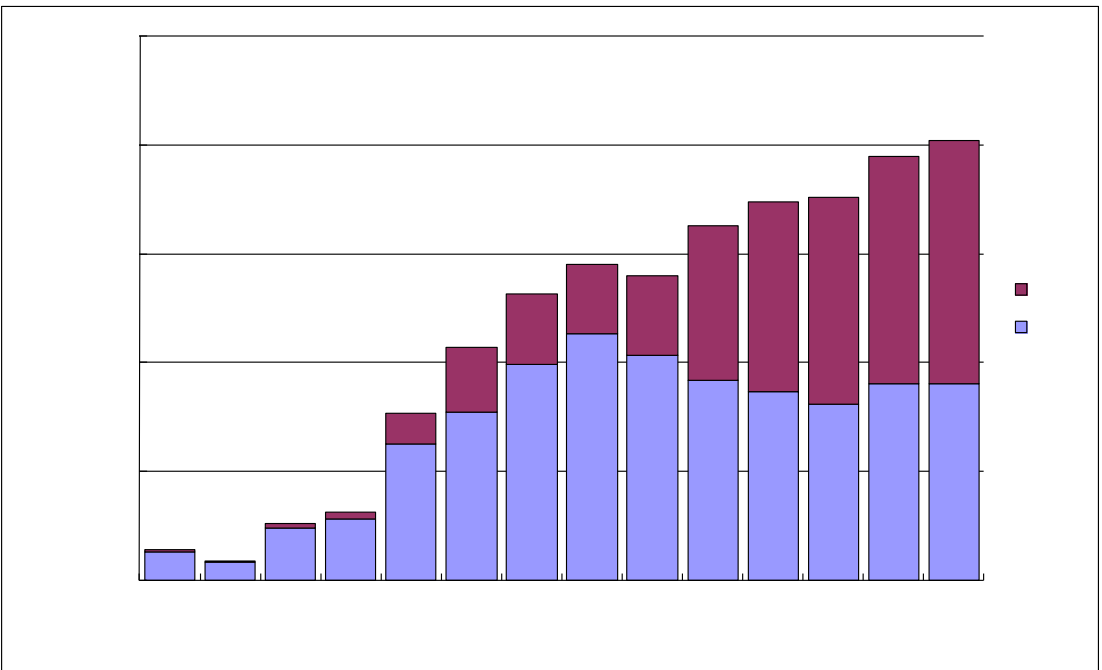
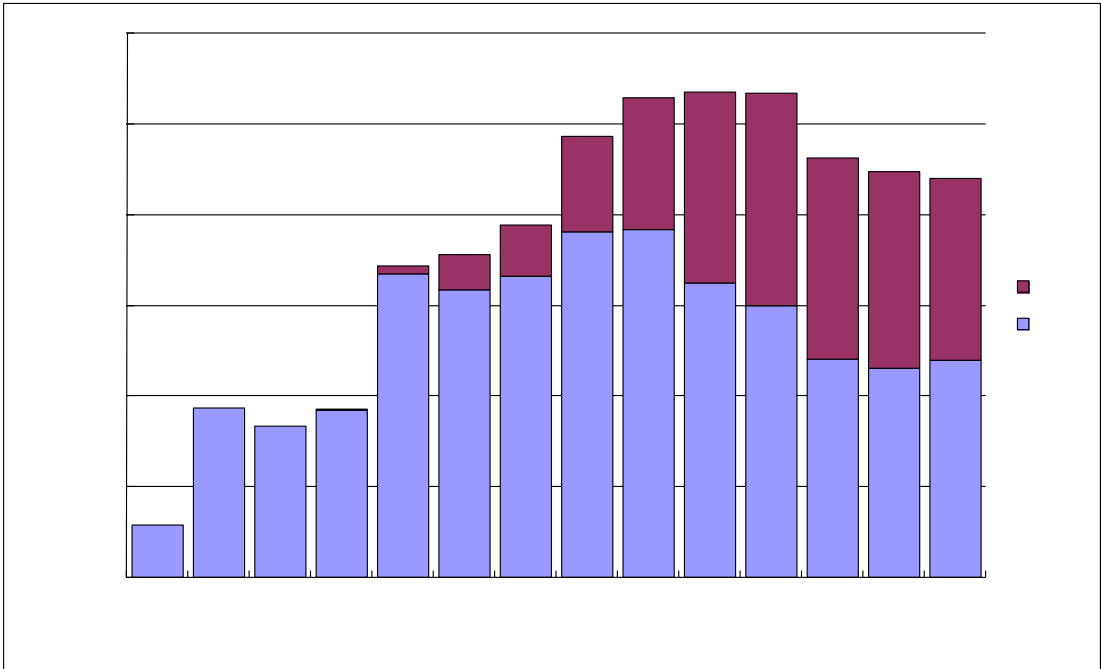


(

)

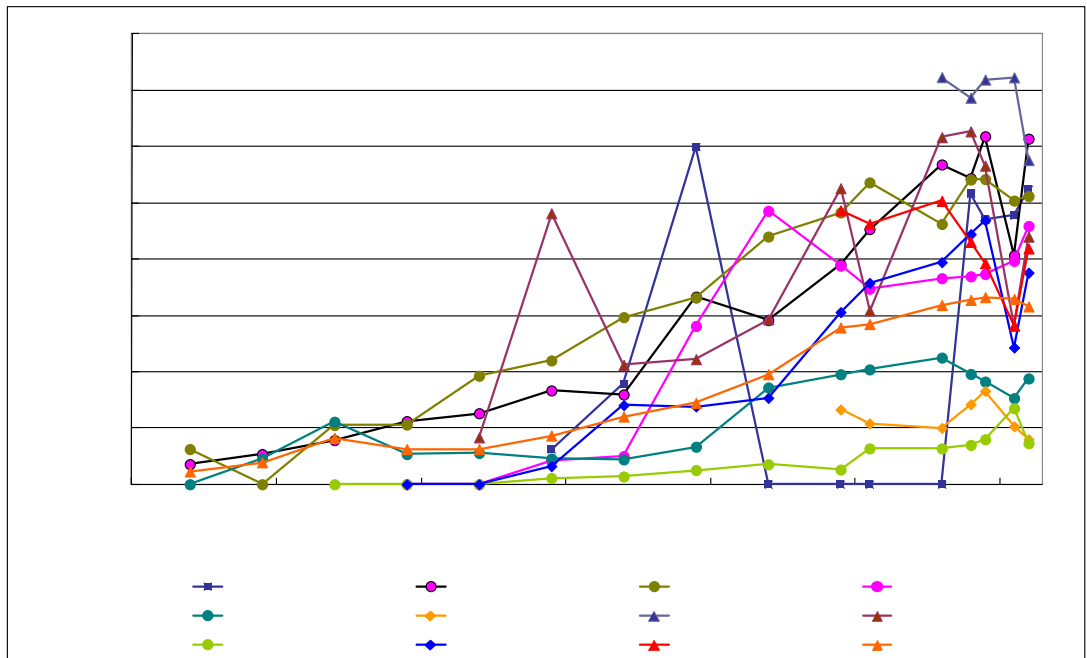
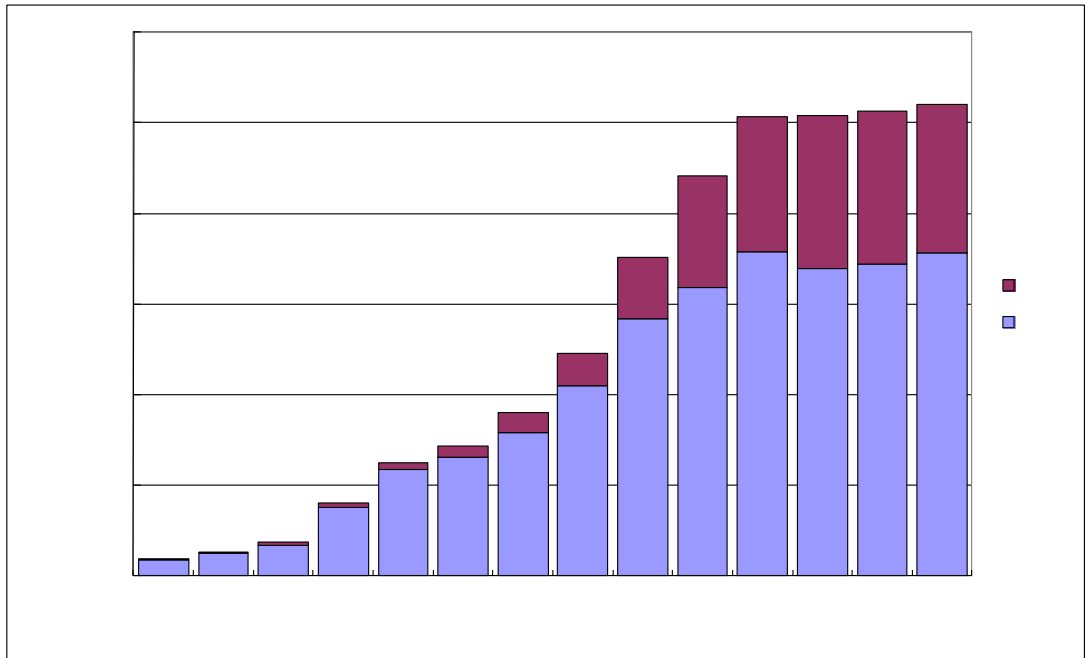






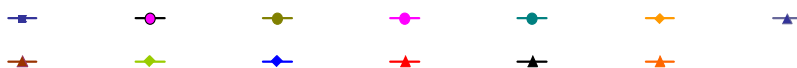
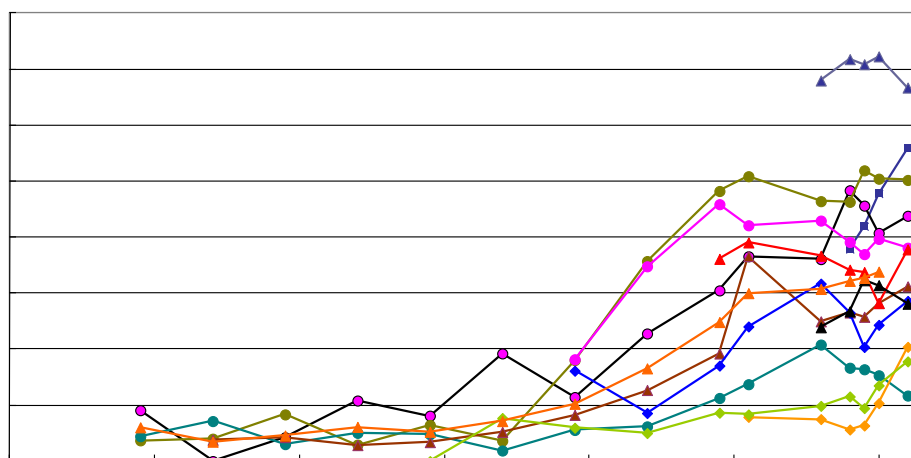
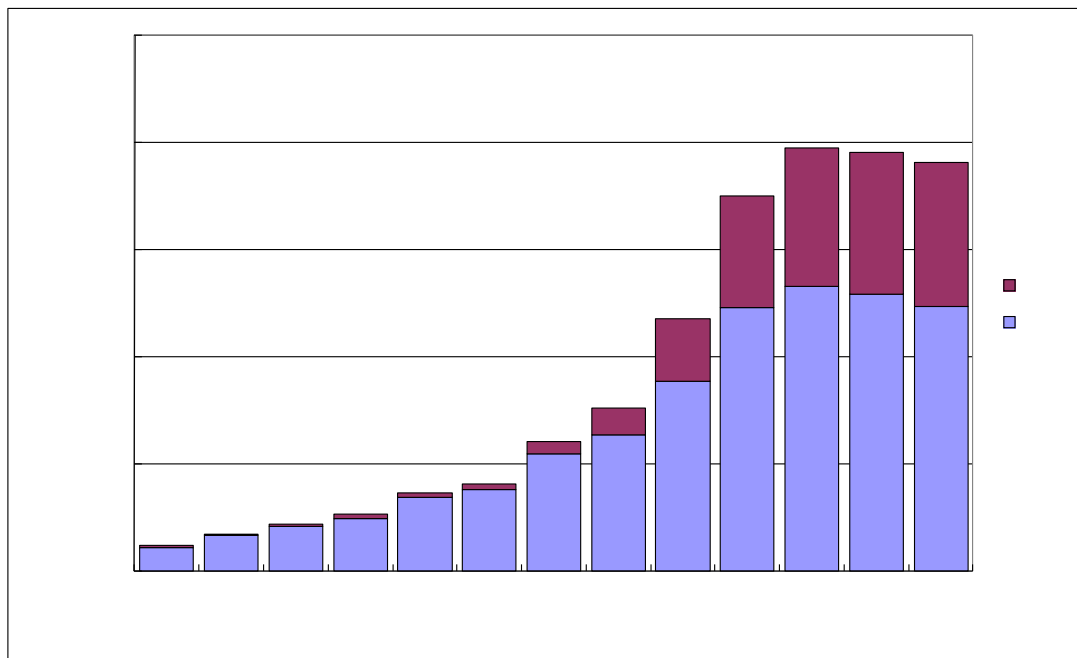
(2)

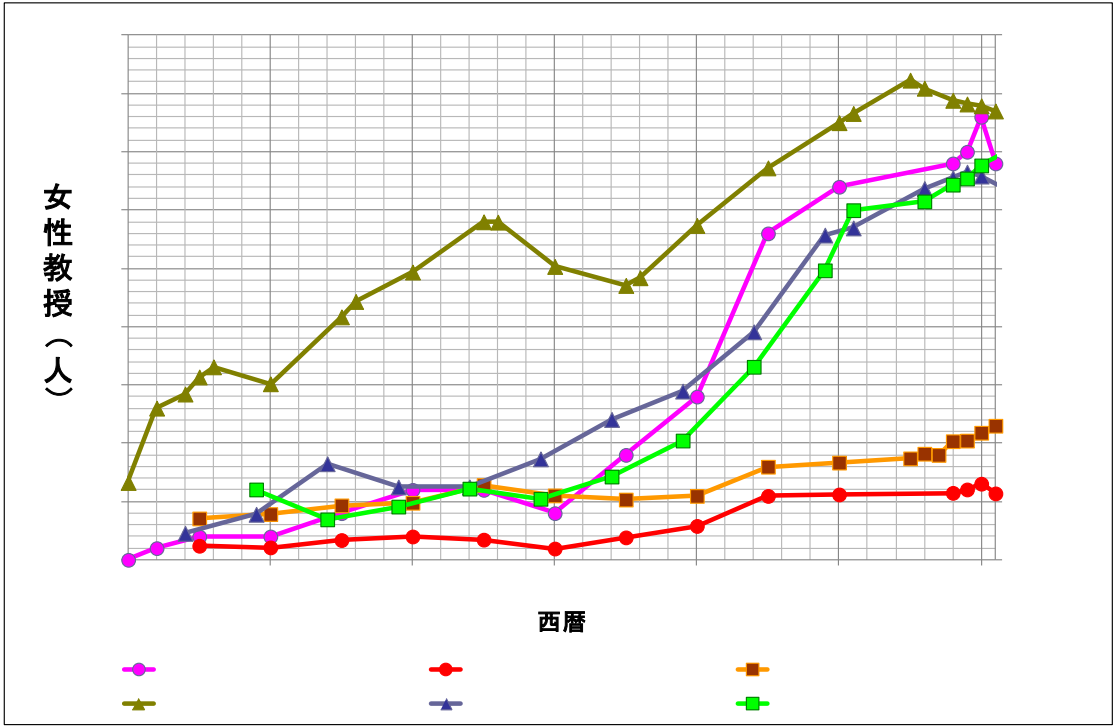
28 1953



(3)

28 1953





1

2



		9	8	1	11.1%
	(A)	1,542	1,364	178	11.5%
	(A)	2	2	0	0
	(B)	108	85	23	21.3%
	(C)	114	58	56	49.1%
		596	400	196	32.9%
		72	66	6	8.3%
		2	1	1	50.0%
	(A)	6	6	0	0
	(B)	4	4	0	0
		730	57	673	92.2%
		131	62	69	52.7%
		3,316	2,113	1,203	36.3%

23 5 1

		1	1	0	0
		5	4	1	20.0%
		1	1	0	0
		2	2	0	0
		2	2	0	0
		3	2	1	33.3%
		2	2	0	
		18	16	2	11.1%
		1	1	0	0
		7	6	1	14.3%
		14	12	2	14.3%
		45	44	1	2.2%
		19	19	0	0
		120	112	8	6.7%

23 5 1

(1)

	597	563	34	5.7%
	442	398	44	10.0%
	117	94	23	19.7%
□*□	376	301	75	19.9%

(5)

	4	3	1	25.0%
	2	2	0	0
	11	4	7	63.6%
	5	1	4	80.0%
	9	2	7	77.8%
	31	12	19	61.3%

(6)

	4	4	0	0
	5	5	0	0
	11	11	0	0
	6	5	1	16.7%
	5	4	1	20.0%
	31	29	2	6.5%

(7)

	9	7	2	22.2%
	26	26	0	0
	9	9	0	0
	28	24	4	14.3%
	72	66	6	8.3%

23 5 1

	22	21	1	4.5%
	12	12	0	0
DNA	12	12	0	0
	11	11	0	0
	9	9	0	0
	7	5	2	28.6%
	7	6	1	14.3%
	7	6	1	14.3%
ES	7	4	3	42.9%
	7	6	1	14.3%
	7	6	1	14.3%
	21	13	8	38.1%
	129	111	18	14.0%

23 5 1

	10,936	6,729	4,207	38.5%
	2,608	1,784	824	31.6%
	1,746	1,122	624	35.7%
	160	115	45	28.1%
	15,450	9,750	5,700	36.9%

23 5 1

(1)

	564	279	285	50.5%
	642	264	378	58.9%
	2,153	974	1,179	54.8%
	863	536	327	37.9%
	980	718	262	26.7%
	1,046	819	227	21.7%
	649	452	197	30.4%
	537	104	433	80.6%
	516	201	315	61.0%
	321	148	173	53.9%
	2,225	1,995	230	10.3%
	440	239	201	45.7%
	10,936	6,729	4,207	38.5%

(2)

	166	79	87	52.4%
	140	54	86	61.4%
	385	188	197	51.2%
	183	99	84	45.9%
	320	260	60	18.8%
	201	185	16	8.0%
	85	36	49	57.6%
	109	61	48	44.0%
	644	597	47	7.3%
	158	99	59	37.6%
	217	126	91	41.9%
	2,608	1,781	824	31.6%

	118	52	66	55.9%
	105	59	46	43.8%
	217	108	109	50.2%
	97	60	37	38.1%
	111	98	13	11.7%
	54	43	11	20.4%
	102	34	68	66.7%
	6	5	1	16.7%
	571	393	178	31.2%
	169	139	30	17.8%
	98	70	28	28.6%
	98	61	37	37.8%
	160	115	45	28.1%
	1,906	1,237	669	35.1%



20

NHK

2002

2005



2008

2006

2006

2005

2007

NHK

2007

2004

2003

2006

2

RYOJI +

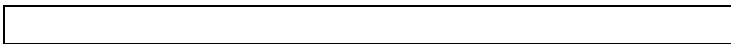
2006

2007

2005

2004

2002



2006

2005

2003

OL

2000

1990

1986



(1) (2)

J

2008

2003

2002

/

2001

1999

2006

EU

=

2004

2000

1997

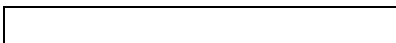
JAICOWS

1996



15 3 31

50



<http://home.hiroshima-u.ac.jp/hua/>

<http://www.hiroshima-u.ac.jp/sankaku/>

CAPWR

<http://www.capwr.com/>

<http://www.gender.go.jp/>

<http://annex.jsap.or.jp/renrakukai/>

あなたがあなたの道を歩むために ～広島大学の男女共同参画～

発行年月：平成24年3月（第3版）

編集・発行：広島大学男女共同参画推進室

所在地：〒739-8524 東広島市鏡山1-1-2

TEL:082-424-4355

FAX:082-424-4355