



%oCSfè2 y'>y p  
%FWFMPQNFOU 1PMJDZ  
, "8"5" , FJTVLF

yIDEC w...^ œz \ œt j x{ b â  
10D t IDEC t • l o € " † ` h ' >  
p q ` † b { ² w • ó x z & A ¶  
w ; ü ú w ° mp K " z Ñ † & A ¶  
p b {  
y Ñ † & A ¶ w y / \$ s Z € 0 Å x z  
p Ú " ) • æ Å z U ó %oC s r Ñ † t  
‡ m ~ " ð J p b { ‡ h q E \$ s Ñ †  
& A ¶ t S M o x z - - • Á z H w ð J s w Ñ † q T  
T ~ " w M ð J < O A s Z € 0 Å q s l o M † b {  
y & A ¶ ¶ . w s T p z Ñ † & A ¶ U Ž Š " p Â x Û â ‡  
b ‡ b O X s l o M † b { \ • x & A ¶ t S M o O A ' ^  
• " z > ! ^ • & A w ~ é " ì ç = z • ~ " ) z q  
M l h ð J q Ñ † ð J q w t z Ā Š o ó v s ì " è ' U  
' Ý ^ • o M " T ' p b { \ w h Š Ñ † ð J } Ú € w Z €  
] J q ` s M Z € t q l o < z Ñ † & A ¶ } ¶ • \ q w  
™ [ x G V M q M Q † b {  
y ‡ h Ñ † ð J x z C 2 M í t S M o < Ā Š o O A s ð  
J p b { ° ™ \$ t & A w R Ō a p x z x s N ç = • Ñ  
‡ ç Ō w F Ū ! G U o ^ • o M † b { f • t Ç 5 ` o z  
^ ‡ \_ ‡ s Ñ † ð J < ~ Ø = ` o V † b { \ • ' w ð J t  
M T t í X 0 r b " T U z & A w Ē \$ z † \$ s R Ō  
w h Š t O A p b {  
y \ • ' w ð J t 0 ` o z Ñ † & A ¶ p x g æ z î Ā w t  
Ø T ' r > t " Ê œ p M † b { ‡ h Z € > æ O h Š w T  
F q ` o z : ¶ q w - ¶ w , Ā \$ s œ Ý U ž " q t Q † b {  
\ • ' ) § b " \ q x z ° q î w ð J } r > b " ± q M  
O è \$ t 0 ` o z ° \_ G V s s " " t \_ Q " T < ` • ‡ d  
œ { ` T ` ° S 6 Y ` o ` ‡ Q y z ‡ x t i ÿ M ð J t 0  
` o ; p V " \ q < ‡ h Ā p b {



Hello, everyone. My name is Keisuke Kawata who joined the IDEC in last October. My research field is the Labor Economics which is one of applied filed of the Economics.

The classical research objects of the Labor Economics are labor issues, for example, wage inequality, unemployment, and skill development. Moreover, in the modern Labor Economics, a wide range of issues related with labor issues, such as, education, poverty, and family issues are also important research objects. In the modern Economics, the Labor Economics plays an important role. This is because that there are serious interactions between labor issues and some important issues of Economics, such as, business cycle, globalization, and regional differences. Consequently, it is important for non-Labor Economists to study the Labor Economics.

Labor issues are also important in developing countries. In historically, the rapidly economic growth has triggered urbanization and the labor market expansion. Simultaneously, it could lead to serious labor problems. To the sustainable economic growth, we need to think to how to fix it.

Labor economists approach these problems using formal theories and empirical methods. So, Mathematics and Statistics are important foundations of the modern research. You might think that it is an indirect way for problem resolution in real world to spend any time to study Mathematics and Statistics. However, once you study it, your knowledge can be applied to any problems.



y ÿ a G ¶ p x z R25å10D' "z æJ ¶ ² w § >

! Zz \$ œ] - - æ" Äÿi ñ Óé ñ á Ü ó ù - ñ  
 ç = ž \ £ @hS • Tp è s ž \ p q Ñ \ Ó é ñ á Ü -  
 › %œ • ` ‡ ` h { M — Z € J x z \ • ‡ p î a ` o V  
 h21 HD COE zGELs Ó é ñ á Ü zG-ecbo Ó é ñ á Ü s r  
 p l o V h î « \$ s - - Z € w Æ ^ î w • z M í p w  
 ¥ z - - z è w Z € î w U ô X ° A ^ • z Ó é ñ á Ü  
 p œ ( \$ p Ä ) r l o M ‡ b {  
 y Ó é ñ á Ü x z H „ w Ú E Æ b • ñ w = ž \ ] J ›  
 r > b " P w - R › è ! ` z ° Ž w - - Z € ; • '  
 Ä z M — ; s q w È ~ — w ‹ q p î a b " á  
 ° w ¶ • Ó é ñ á Ü p b { ì q í w ç U " t ' l o  
 7 t - ‡ • h • ñ x w p q q = T ' C ` z ž A s œ  
 z J ¶ U [ › f w • p \_ Z i ` ç %œ C ` £ z - %œ ç & ; ~  
 î ÷ b " £ z = U œ ‹ b " J ¶ U [ w e \ f U z Ú E  
 Æ b • ñ U J Q " ] J › ð ` z h S • T p è s ž \ p  
 q › Ñ \ b " " Ò p K " q ß Q ‡ b { f ` o z É s ] J  
 › J Q " • ñ t / " 4 M z Ç " ¶ T ' C Ý ` z œ z J ¶ U  
 [ w È m \ O ` h D ó Q › ç [ z & ~ s œ z J ¶ U [ › z  
 ñ î t l i ± Ä ~ 1 æ á " ³ ä i • q & ; ~ î ÷ b " ž  
 \ p q Ñ \ w æ " ¼ " › - R ` ‡ b {  
 y Ó é ñ á Ü t x z = Ñ \ - " µ z U [ Ñ \ - " µ z p  
 q î ÷ - " µ w m w - " µ U K " z ° Ž w Ú E Æ b •  
 ñ p æ O z l i ± Ä - - › G V s › Ä q ` o M ‡ b { ¶  
 \ w Æ ^ Ñ Ÿ " ç Ä x z i Ä › µ ú q ` h Æ ž ` ž q z  
 Ô Š w µ • • ñ w È m w Ú E Æ b • ñ p b { f \ t x z  
 X w = ž \ ] J U O ` z œ q M í U ž è `  
 o J Q " ] J ‹ — s X K " ‡ d œ { ¶ \ x z Ú E Æ b • ñ  
 w M ý Ú E w ‹ q p z ü ú µ ù w œ Ý z æ i " µ È Ò " ³  
 ä i t m M o w œ Ý q U [ › i ^ ` ` o z • ñ p q t /  
 " 4 l h l i ± Ä ~ 1 æ á " ³ ä i › Ñ Z ` z = ž  
 \ ] J w r > t Ä ^ ‡ b {  
 y ¶ \ U z ¶ • Ñ Ÿ " ç Ä x z IDEC w . f \ U Æ b " ³  
 ä i t m M o w œ Ý q U [ › i ^ ` ` o z • ñ p q t /  
 " 4 l h l i ± Ä ~ 1 æ á " ³ ä i › Ñ Z ` z = ž  
 \ ] J w r > t Ä ^ ‡ b {  
 y ¶ \ U z ¶ • Ñ Ÿ " ç Ä x z IDEC w . f \ U Æ b " ³  
 ä i t m M o w œ Ý q U [ › i ^ ` ` o z • ñ p q t /  
 " 4 l h l i ± Ä ~ 1 æ á " ³ ä i › Ñ Z ` z = ž  
 \ ] J w r > t Ä ^ ‡ b {

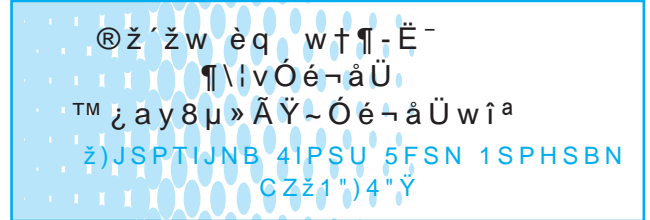
Hiroshima University has started the MEXT Program for Leading Graduate Schools titled "Taoyaka Program for creating a flexible, enduring, peaceful society" in the Composite Category (symbiotic multicultural society). IDEC has gained extensive experience in practical education and research as well as educational achievements in the fields of environment, education and peace in developing countries through the 21st Century COE Program, Global Environmental Leaders Education Program and G-ecbo Program. These efforts have been well received and allow us to play a leading role in this newly launched program.

The Taoyaka program is a five-year doctoral degree course

aiming to train human resources able to resolve multicultural coexistence issues faced by disadvantaged areas throughout the world, with the cooperation of domestic and international academic institutions, companies and international cooperation organizations. Based on regions' unique societies and cultures, which have grown diversely over time and space, the required advanced science and technology should be identified (developed) and nurtured (applied/implemented) in the regions. In this way, we believe that a cycle of science and technology, led by the culture of the region concerned, will overcome issues and is the way forward for the creation of a flexible, enduring, and peaceful society of coexistence. We will train leaders who work closely with regions facing problematic issues, develop proposals based on their needs, expand the potential of state-of-the-art science and technology and ensure that the appropriate advanced science and technology is applied and implemented in onsite solutions.

The program consists of three courses of Cultural Creation, Technical Creation and Social Implementation and provides unique onsite education implemented in disadvantaged regions within and outside of Japan. The disadvantaged areas covered as educational fields are south Asia centering on India, and semi-mountainous regions in Japan. These two disadvantaged regions share many common elements in terms of the multicultural coexistence issues that they face. Based on the constraints in the disadvantaged regions, students mobilize their cross-disciplinary knowledge and technology about reverse innovation to create onsite solutions, respecting the local society

The educational fields will often coincide with areas in which IDEC alumni are working. If you happen to encounter program students in the field, please encourage and advise them.



è ž \ è z y • y a à  
 1 F B D F B O E \$ P F Y J T U F O D F  
 : " . " / & 5 B U T V P

y ç a G ¶ U € h ` o M " © Ž ' ž w è q w t ¶ - È - ¶ \ i v Ó é ñ á Ü ç Ô Š ¶ [ ü µ q H „ 2 %œ — Ä Ä © © ß i í µ ~ ž ' ž - £ x z 2013 á D Ô TM 4 Ô ç 12 Ô £ z © ç a y 8 µ » Ä Ÿ ~ Ó é ñ á Ü - › î a ` ‡ ` h { \

wy 8 μ » Æÿ ~ Óé - á Üx z ŠE ¶ \ ! v Óé - á Üw  
 È G ¶ q ž %op î a b " Ö8 ~ y 8 y ¶ w ° æp b {  
 y p Mx z 2013 á S w ° î a w r p G ¶ ç IDEC t | O ¶  
 æ£ q ` o z PAHSA U - H ` h 12 È w ! è \ ç ³ ž " ~ «  
 ž á G ¶ ¶ ï Á É ³ ž ¥ È z ½ £ ï Ú G ¶ ¶ » ¥  
 È z Æ ~ á ~ ± " ç G ¶ ¶ Ñ ÿ æ Ð ï ¥ È z Æ ï à ï » J  
 G ¶ ¶ ³ ï " Ù " ç ¥ È z í ï Æ ± μ Ä á G ¶ ¶ § ï Ø '  
 ž ¥ È z f Ä ÿ Þ " ç q G ¶ È £ › ÿ • M ` † ` h {  
 y ! è \ x z w † ¶ - È t È b " < s è [ w „ T z  
 ç a è G æ ç %o z G è Ú á " ´ ž Ü • w \_ ¶ z v a  
 « s r t € C ` † ` h { D Ô w è G æ Ü / • w € »  
 ¶ t î a ^ • h f 0 \ t ' " ô é t x z ! è ° %o z  
 K t Ö › Z o M † ` h {  
 y ° M z 2013 á D t Æ ~ á ~ ± " ç G ¶ U ð Ä q s l o  
 î a ^ • h Ú Ç á y 8 μ » Æÿ ~ Óé - á Ü t x z IDEC T  
 ' < È w ¶ \ U € C ` † ` h { s S z 2014 á S w y 8 μ  
 » Æÿ ~ Óé - á Ü x z Ö Z q ½ £ ï Ú p x t î a ^ •  
 " ' p b { ° È w y ¶ ! v w 7 t m M o x ž < w Ñ £ " μ Ö ç « › € ° X i ^ M {

yThe Peace and Human Security in Asia (the PAHSA), a students' exchange program 'Campus Asia program' funded by Japan Society for the Promotion of Science [JSPS], in which Hiroshima University has a share, conducted 'Hiroshima short study program (the Hiroshima program)' from August 3rd to 14th, 2013 (for twelve days). The Hiroshima program is a part of the long/short term students' exchange programs, with collaboration among affiliated universities, into the students' exchange program.

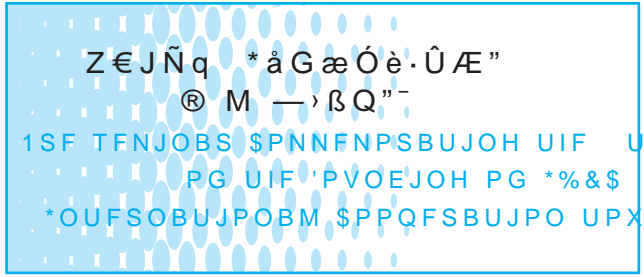
yIDEC and Faculty of Law in Hiroshima University taking the role in, invited twelve students who were selected by the PAHSA for the Hiroshima program. Those participants came from six universities (Chiang Mai University (2), De La Salle University (3), Nanyang Technological University (2), Pañasastra University of Cambodia (1), Universidade Nacional Timor-Lorosa'e (2), and University of Syiah Kuala (2).

yThe Hiroshima program provided variety of lectures regarding human security as well as chance to visit to Hiroshima Peace Memorial Museum, YAMATO Museum, Miyajima site and so on. All the participants earnestly listened to the lecture by A-bomb survivor after their presence to the peace memorial ceremony on August 6th.

yOn the other hand, the PAHSA also provided 'Manila short study program' in September 2013, which three students of IDEC participated. The PAHSA plans to conduct short study programs in Nagasaki and Chang Mai separately in FY2014. Please visit the following website (Facebook)

showing various aspects of the students' exchanges under the PAHSA.

The Facebook URL:  
<https://www.facebook.com/PAHSAcampus>



M - z € J ð y { j y · Y  
 % F B O P G \* % & \$  
 ' 6 + \* 8 " 3 " " L J N B T B

y H s ç a G ¶ x " Ü § Û ï - Æ " w R 25 á 11 D Ô  
 • ¶ M : 30 ¶ B : 30 w z IDEC G q ^ è t S M o a G · Û Æ "  
 › %o 5 ` † ` h { € C : x 23 È p z ° E Z € J Ö È  
 ç • < æ ° È \* - \$ z ¶ • . ° È \* - \$ z ! { - %o È \* -  
 \$ z ' > 2 \$ - \$ £ › ÿ V z í É ç Ä ÿ μ § ç ³ ä ï › æ  
 M † ` h { Þ Ä è " » x q Z € J Ö w { j U ç Š † ` h {  
 y † c s Š t z Ç e t æ J ¶ ² p æ ~ • h Z € J w Û ç  
 ³ ä ï 6 [ w í ž æ ï - ç %o t , n V z { j U IDEC w  
 q - t m M o C ` † ` h { - - z Z € z p q é Y w G V  
 X m w § Ä ° æ " ] q t Z € J w í w w • o M " : q  
 ¶ M w ] J t m M o ï Ä \$ s C U s ^ • † ` h {  
 y M o ° E Z € J Ö T ' ¶ ' C t m M o - ÿ ï Ä › ~  
 † ` h { ž ' ž w y x É p q w f - t ² Z h - - Z € Ç :  
 w f " z ² ï í ž Ó é - á Ü w G ¶ • w p t @ L s r z  
 IDEC U a ^ 20 á p • u ` o v h - - Z € í w U ô X °  
 A ^ • † ` h { ° M z - p k Y s o • Ý t 0 b " . f  
 \ T ' w ¶ M \_ - A l • w 0 z Z € J › Ö Q h - - Z € È  
 è w 6 \$ z ó t ' " ¶ œ ] • w . \$ ) s r w ž A  
 Q U ! ^ • † ` h {  
 y † h z í w 10 á t ² Z o IDEC U L h b , V p Ä t m M  
 o z í É æ μ Ä T ' ž < w ' O s é . \$ s Š U Z ^ • †  
 ` h {  
 ç £ h á , ž — B f " O w ~ t 0 b " é Y  
 ç £ Ô ¶ — Ô w ~ ³ w h Š w ¶ [ \$ † V T Z  
 ç £ Ç á " ¶ è » " z x " Ü Ö " ' z 1 " ³ ß ç É ç Ä  
 è " « › Æ ; ` h . f \ • w ' \$ s Ø C ¶ M { f  
 w M z Ý " æ ï - æ μ Ä • Ú μ - Û s › Æ ; ` o !  
 ^ \$ t Ø C › ! Z " \ q w p V " » É U ž A {  
 ç £ ç a ] ° w N G O Û " » ç ± Ä w á æ s r z • i t  
 M — È N G O › - o " h Š w é Y  
 y Š · Û Æ " x IDEC U 20 á 2 æ p V h { w T g t m  
 s U l h i Z p s X z 30 \* á t ² Z o ý h s ] J › 6 Ý Ý

b " \ q w p V h TM- p ù s ; q q s " ‡ ` h { M h i  
 M h TM\_ • Š › , á t ² o ` z Z € J w ý h s æ ^ - h  
 › f ` ` o z 2014 å S t î ^ a b " Ñ q 20 \* å G æ Ä À p p  
 q t ç X - ` b " ' p b {



Pre-seminar commemorating the 20th anniversary of the founding of IDEC

“International cooperation towards the future”

yDuring the 7th Hiroshima University Homecoming Day on November 2, 2013, a Pre-seminar to commemorate the 20th anniversary of the founding of IDEC was held from 13:30 to 15:30 in the Large Conference Room at IDEC. There were 23 participants in attendance and a panel discussion was held with four invited former deans of IDEC: Prof. Emeritus Dr. Shoichi Yamashita, Prof. Emeritus Dr. Shuichi Nakayama, Prof. Emeritus Dr. Kimio Saito and Prof. Hideo Ikeda. The discussion panel was presided over by incumbent dean, Prof. Akimasa Fujiwara.

yDuring the first part of the seminar, Prof. Akimasa Fujiwara explained the current state of IDEC with a report which had been presented at a Ministerial Hearing on Redefining the Mission of the Graduate School at Japan’s Ministry of Education, Culture, Sports, Science and Technology. IDEC’s outstanding achievements and future issues were comprehensively reported in the fields of education, research and social contribution.

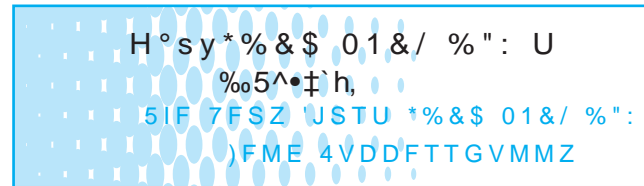
yThe former deans commented in turn after the report. IDEC’s accomplishments in the past two decades in education and research fields were highly evaluated, as represented by the establishment of a center for education and research toward developing a low carbon society in Asia and expansion of the Zambia program to other universities. Next in the discussion, the panel identified areas for improvement. Issues raised included responses to opinions and requests

from alumni for a precise and fair recognition of credit; the need to restructure cross-departmental organization in education and research; the need of proactive involvement in Japanese undergraduates’ education by providing courses in English.

yFurthermore, the panelists offered specific suggestions for the role IDEC should play in the next decade, which include:

1. Contributing to the revision of the Establishment Act of Japan Overseas Cooperation Volunteers.
2. Developing an academic approach for improving relations between Japan and China/Korea.
3. Communicating and disseminating information to alumni through newsletters, IDEC webpage and social media services. Mechanisms for the automatic distribution of information to alumni should be effective, e.g. mailing lists and mass communication.
4. Supporting the establishment of Hiroshima-based NGOs working in the field of international cooperation, e.g. managing NGO portal sites.

yThe Pre-seminar provided an important opportunity to confirm the new objectives as we move towards the 30th anniversary as well as to recognize the achievements IDEC attained in the past 20 years. We plan to review and incorporate the advice and suggestions from the panelists as we formulate a new action plan for IDEC and will release it to the public at the official ceremony in 2014 marking the 20th anniversary of the founding of IDEC.



% c s f è 2 y b > y \$ ° Ö  
 % F W F M P Q N F O U 1 P M J D Z  
 : 0 4 ) \* % " : V J D I J S P

y ^ " 1 1 D Ô t z G æ b , V @ H ° s IDEC Open Day  
 U % 5 ^ • ‡ ` h { p Ô x S 1 > t < ‡ • IDEC - Û á  
 Ç Â ÿ y T " p s X ç a G ¶ w ¶ æ S ' | Û j w G ¶ •  
 ô í w ¶ \ w ^ s ^ æ z • i w M ' < K ~ d o : ! Ê w ]  
 € C > M h i V ‡ ` h {  
 y • TM ì T ' æ ~ • h H ° æ w ! " Ó ï á Ø p x z ~ i  
 æ \_ " \ q w p V s M IDEC p w Z € Æ ^ w 7 › - % ` `  
 ‡ ` h { M í K ~ • " Z € ° 0 q Æ C s ^ æ t î • o z  
 € C ^ • h ¶ \ w M ' x X w - 9 › ! Z ' • o M h ' O  
 p b {  
 y f w TM S \ s ~ • h H Ë æ w M = ! v › è \$ q ` h



©IDEC Ñ £ µ - p x z H „ 12§ T ' w IDEC w ¶ \ h j  
 U ù t ' “ > T Z o x w x « % o g > ü ” ã M z † h z ;  
 w ¥ ÷ > 5 l o x w N • ã C > x Ð ` † ` h { Ô Š p x  
 s T s T - ~ Q s M Š Ô w - @ t R Ô w M ' T ' x @ Š  
 “ \$ i , - q M O ` U K U I o M † ` h {  
 y s \ w IDEC Open Day > Á Ä t ] - w O j t % 5 p  
 V h \ q t m V † ` o z € C ` o X i ^ I h M ' z f ` o  
 \ æ s t É V ' ` M IDEC > < l q X w t œ I o < '  
 M h M q M O ä M ¥ M > ž ` o ] — X i ^ I h ... 7 t  
 \ w Ô > S “ ` o ú T ' S ± > ` í [ † b {

It is my great pleasure to announce here that the very first IDEC Open Day has been held successfully on November 1st last year. It was indeed a great success with many participants even from outside of IDEC, many college and high school students as well as locals having gathered at IDEC to experience the academic activities, to exchange international culture, and to know better how wonderful we are.

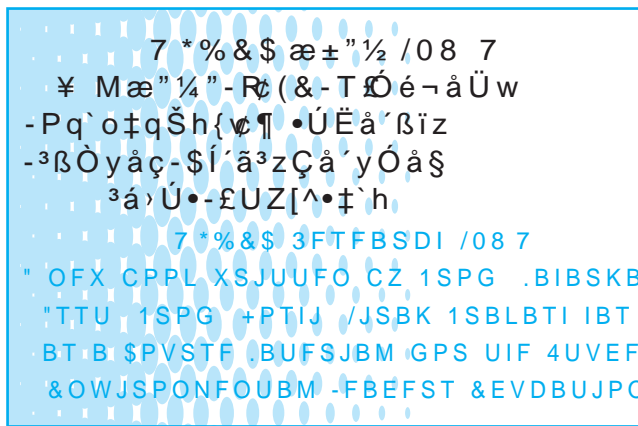
IDEC Open Day started out with Open Laboratory where participants joined the lively discussion of the seminars where students at IDEC present their research on education, development, and environmental issues in their home countries. Following the Open Laboratory, IDEC Festival welcomed the participants to taste the real traditional food of 12 different countries while entertaining with beautiful and exciting dancing and singing performances.

Here I would like to express my deepest gratitude to all of you who joined this wonderful event, as well as those who shared the passion and effort in making it come true. Thank you very much!



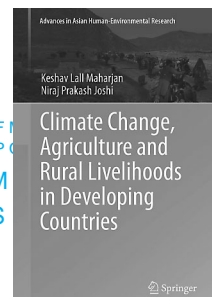
% ` h i Ä É ³ ž ½ ” Ü

Indonesian Team, the Winner of the Performance Contest



Ú È á ' ß iz - ³ ß Ö y á ç í  
 ' ä ³ z Ç á ' y Ó ä § ³ á

& EVDBUJPOBM % FWF  
 \$VMUVSBM BOE 3FHJPO  
 .) " 3 + " / , FTIBW - BMM  
 + 04 ) \* / JSBK 1 S



@ > © ! ^ z M í t S Z "

y y y y y y ö Ä S ' | ö \ Æ -

Ü È ä ' ß i ~ ' ä ³ ¶ 2013 ä 8 D £

Series: Advances in Asian Human-Environmental Researches  
 Springer p w Š { w ° p  
<http://www.springer.com/environment/global+change++climate+change/book/978-4-431-54342-8>

y Š { x @ > © ! ^ q ö Ä t | ö \ Æ q w - t m M  
 o f w , Š \$ Ĩ > † i ` z M í w q Ý > g r ` z f •  
 > ~ ³ b ” h Š t “ † • o M ” M ^ ² t m M o t t  
 ` z ĩ • † ¶ - È > æ , t Ä « > ü s b ” • ó { p b { >  
 © ! ^ U ö Ä t è ' > t ... b i Z p x s X ö Ä < > © ! ^  
 > • Ö b ” ° A ¼ p < K “ † b { f \ p \ w > g r b  
 ” h Š z Š { x † c > © ! ^ w æ Ö 8 \$ ° 0 q ² > † i  
 ` z f • U \ g ¶ \$ t ^ è ú t ) Q ” è ' t m M o T g ` h  
 í z ö Ä t ) Q ” è ' t m M o r † > æ l o M † b { f  
 ` o ö Ä æ ó > í ' s M \$ > © ! ^ ! - t Š ” ž A Q  
 t m M o t t ` z M í U ~ N ^ { t ' “ « æ ” ĩ % o C  
 Ý § Ç ¶ Ü ç C D M £ w 7 s M > © ! ^ è ' ” Ü t € C b  
 ” ... ; ( ù t m M o r † ` z f w 7 s . M U M í w “  
 Ê ^ t ° m w D ó Q > ) Q ” ; q q s “ ~ ” q r ` o M  
 † b { Ž í > • † Q z Š { x ö Ä t S Z ” > © ! ^ w è ' >  
 > - ” M O t m M o r † ` z • - ö Ä \ ^ z ĩ • A ” t |  
 ĩ • † ¶ - È w : T ' % è ' t m M o † q Š o M † b {  
 7 T M t z É í ” ç æ ú w Ä « ü s > ; M o > © ! ^ U ö Ä  
 t | ö \ Æ t ) Q ” è ' t m M o ü s ` z f • • † Q z  
 T M w ] J t m M o t t ` o M † b {

y Š { x z ¥ Mæ" ¼" - RøGELs £ Ó é - á Ü w -  
P q ` o ‡ q Š ' • o M" Uz \$ - › : X " Ö • z ‡  
h ü s À " ç w Ü • ü s A L w ° 0 x Ä ` X 2 % ` o K "  
w p - P q ` o i Z p x s X z > © ! ^ q ö À t | ö \  
Æ t m M o g r › Š ' O q b " ¶ o w z x a Š o \ w  
w ð J t î • " z Z € z S f î æ ' U ° j b , V  
1 s Z € { p b {

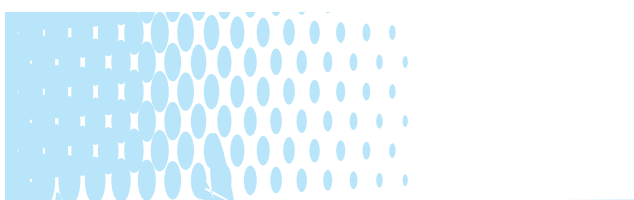
*Climate Change, Agriculture and Rural Livelihoods in Developing Countries* by Maharjan and Joshi, August, 2013, Springer Japan.

This book is about climate change and its relations with agriculture and rural livelihoods. It is to be noted that not only climate change affects agriculture, but agriculture has also contributed to the climate change. Hence, the book starts by providing a basic understanding of climate change science followed by the relation of climate change to agriculture, the impact of which is discussed based on the particular impact of climate change on plant and animal physiology. Then, it discusses inclusion of the agriculture sector in various international climate change negotiations. It also reviews



workshop, students and professors sat around several tables and shared their ideas frankly on the topic of “What is your ideal image of international cooperation in the future?”.

According to the results of questionnaire, most participants were really satisfied and could actively interact with each other in the forum. We hope that the network built in the IEDF this year can create tangible results in international cooperation in the future.



### **The 254<sup>th</sup> IDEC Asia Seminar**

è £ 4 Q F B L F Professor Jeremi Suri (Professor of History and Public Affairs, Lyndon B. Johnson School of Public Affairs, Department of History, Visiting Professor, IDEC, Hiroshima University)

J 5 J U M T The History of American International Nation-Building and Development Activities : Legacies from Two Centuries of History for Current Policies

Ô Ì % B U F July 12, 2013

This seminar was organized as one of two series of lectures by Professor Jeremi Suri, the IDEC visiting professor from the LBJ School of the University of Texas, Austin. Prof Suri focused on the research findings from his most recent book entitled “Liberty's Surest Guardian: American Nation-Building from the Founders to Obama (2011)” (<http://nation-building.jeremisuri.net/index.html>). Professor Suri discussed the core ideas and assumptions that have animated American development and democratization efforts. The role of ideas and historical path dependence in explaining U.S. development policies, and their mixed outcomes are introduced. (Coordinator: Shinji Kaneko)

### **The 255<sup>th</sup> IDEC Asia Seminar**

è £ 4 Q F B L F Mr. Hideaki Nakajima (Former Project Formulation Advisor, JICA Liberia)

J 5 J U M F Health Cooperation in Post-conflict Setting

Ô Ì % B U F July 16, 2013

Mr. Nakajima, who has broad experiences on disaster-relief and peacebuilding activities, provided the lecture on a case of health coordination in Liberia. Firstly, he entirely explained situations which have been progressed on post-conflict reconstructions since the peace agreement in 2003 for ending the Liberian civil war. After the introduction, from a



leaders could play a crucial role in terminating the political intervention in higher education and create a healthy learning environment, which can better contribute in quality control and human resource development, so that the education level remains competitive globally

(Coordinator: Keshav Lall Maharjan)

### The 258<sup>th</sup> IDEC Asia Seminar

è £ 4 Q F B L F B of. Dr. Ruut Veenhoven (Emeritus Prof., Erasmus Univ.

Rotterdam, Founding Editor of Journal of Happiness Studies)

J 5 J U M F Advances in Happiness Research

Ô Ì % B U F October 7, 2013

As the principal researcher of the project of the JSPS Grants-in-Aid for Scientific Research (A) (2010.04-2014.03), I invited Prof. Veenhoven to give a lecture. He was born in 1942 and has been described as the godfather of happiness studies. In the lecture, he not only introduced a comprehensive framework of happiness studies but also the most recent research findings related to both developed and developing countries. His lecture provided rich evidence about the necessity of the life-oriented approach that we proposed in the JSPS project for urban/transportation planning and management, which provides insights about how to reflect people's various life aspects into the policy decision-making process simultaneously. (Coordinator: Junyi Zhang)

### The 259<sup>th</sup> IDEC Asia Seminar

è £ 4 Q F B L F B of. Sergei Shaposhnikov (Senior Lecturer, Business School, Lomonosov Moscow State University)

J 5 J U M F Asian Countries and Russia-Potential for Future Cooperation

Ô Ì % B U F November 15, 2013

In the seminar, Dr. Sergei Shaposhnikov firstly introduced the socio-economic development strategy of Russia including more effective development of natural resources, improvement in infrastructure. To achieve development in these areas, he emphasized the necessity of cooperation between Russia and Asia, particularly between Siberia and East Asian countries. He further argued potential benefits for Asian countries concerned, with focusing on Tumen River development area, as the case of multilateral cooperation. After his presentation, there was a lively exchange of views among the participants about the background and objective of strategy direction of Russia.

(Coordinator: Yoshi Takahashi)

### The 260<sup>th</sup> IDEC Asia Seminar

è £ 4 Q F B L F B of. Siriporn Wajjwalku, Former Dean and Associate Professor, Faculty of Political Science, Thammasat University, Thailand

J 5 P Q J The International Development Cooperation by Southern Providers -Asian Emerging Donors and South-South Cooperation-

Ô Ì % B U F November 20, 2013

With more and more Asian countries increase their confidence in economic and social development, there develops a new phenomenon that Asian countries start providing economic assistance to other developing countries. The attitudes of those Asian donors are not the same as those of developed donors in their own pursuit of economic benefit through development assistance. However, the very existence of those different types of donors makes difference in terms of more choices for the recipients. Dr. Wajjwalku argues that the entry of those emerging donors into the international development cooperation will bring a new equilibrium in international relations.

(Coordinator: Osamu Yoshida)

### The 261<sup>st</sup> IDEC Asia Seminar

4 Q F B L F B of. Rimawan Pradipto (Department of Economics, Faculty of Economics and Business Universitas Gadjah Mada, Indonesia)

5 J U M F Does Corruption pay in Indonesia? If so, who are the benefited the most?

% B U F December 11, 2013

Dr. Rimawan assesses the discrepancies in sentencing corruptors by judges in Indonesia's judicial system. The data are based on the Supreme Court's decisions during the period of 2001-2012. The defendants have been classified into five groups depending on their scales of corruptions. Logistic and Tobin's logistic (TOBIT) regressions have been used to analyze both the likelihood and the intensity of sentencing offenders, respectively with particular punishments. The results show that the probability and the intensity of sentencing across various types of punishment may not necessarily correspond to the scale of corruptions. Offenders who committed petty and small scale corruption tend to be punished more severely than their medium, large and grand corruptors. (Coordinator: Daisaku Goto)

### The 262<sup>nd</sup> IDEC Asia Seminar

4 Q F B L F B of. Munenobu Ikegami (Economist, International Livestock Research Institute: ILRI)

Title: Protecting Pastoralists from the Risk of Drought

Related Livestock Mortality: Piloting Index-Based livestock Insurance

% B U F December 13, 2013

Dr. Ikegami reported the application of a promising innovation in insurance design – index-based insurance – that seeks to bring the benefits of formal insurance to help manage the weather-related risks faced by rural crop and livestock producers in low-income countries. He highlighted the research and development agenda of a comprehensive effort to piloting the insurance aimed at protecting the pastoral populations of Northern Kenya and Southern Ethiopia from the drought-related livestock mortality risk that they face. He elaborated the pastoral economy in the regions and the process of implementation from the preparation for the pilots, the launches of pilots in Marsabit County in Northern Kenya in 2010 and in Borena Zone in Southern Ethiopia in 2012 up to now

(Coordinator: Daisaku Goto)

### The 263<sup>rd</sup> IDEC Asia Seminar

è £ 4 Q F B L F Sof. Takao Yamashita (IDEC, HU),

Dr. Kyeong Ok Kim (Korea Institute of Ocean Science and Technology, Korea),

Dr. Han Soo Lee (IDEC, HU)

J 5 J U M Typhoon Haiyan/ Yolanda: Storm surges, damages and modeling

Ô Ì % B U F December 20, 2013

In 8th November 2013, Typhoon Haiyan (local name Yolanda) made landfall over Samar Island in the central Philippine, and brought record-breaking meteorological conditions and unprecedented disasters. In the seminar, Prof. Yamashita gave us the background information on typhoon and storm surge mechanisms followed by talks on numerical modelings from Drs. Kim and Lee. Dr. Kim addressed on the detailed numerical modeling on the waves and storm surges caused by Typhoon Haiyan using unstructured meshes,

while Dr. Lee talked about the waves and storm surge modeling using structured meshes. The seminar also gave us insights on how extreme weathers cause disasters and introduced two different state-of-the-art modeling technologies to predict such extreme conditions.

(Coordinator: Han Soo Lee)

### The 264<sup>th</sup> IDEC Asia Seminar

è £ 4 Q F B L F Prof. Michael F. Sturley (Fannie Coplin Regents Chair in Law The University of Texas at Austin)

J 5 J U M International Transportation Law: The Legal Regimes Regulating the International Carriage of Goods

Ô Ì % B U F December 20, 2013

By its very nature, international transportation involves two or more countries. In theory, it would be possible for each country involved in a multinational transaction to regulate the parties involved according to its own domestic law (and to a considerable extent that happens in practice). But it is often beneficial to have uniform rules to regulate international transportation.



-- = è 2 yDepar tment of Educational Development  
and Cultural and Regional Studies

!Ä¿ì»y"ENJOJTUSBUJWF 4UBGG§

) ÇZ

>;y° Šy' y ÿ°`ì»

(Employed) SHISHIDOU, Ryoko yStaff

) ÇZ

" õyZR ÷ y m y

áæ§ -ç"Ó \*çR¿ r p £

(Transferred) yDEKISHA, Masafumi y

Chief, General Affairs Group(Finance)

ç ¶ [ ~ þ q ^ ¶ È è \* T ' £

) ÇZ

>;yªOjygóyy ÿ°`ì»

(Employed) NAKAGAWARA, Rika yStaff

< G ¶ Å \$ œ ] -- æ " Å ÿ ï - Ó é - à Ü y 1 S P H S B N

GPS DSFBUJOH B GMFYJCMF FOEVSJOH QFBDFGVM TPDJFUZ>

) ÇZ

>;yKÃy^X'y--Z€4•ì»

(Employed) yKORETSUNE, Sakura yStaff

" õyôyóëy--Z€4•ì»

(Transferred) TAKA, Kaori y Staff

ç M — Z € J y ÿ°`ì» T ' £

•ì» @

" õyZR»ây [ZÎÛ € J a V -ã Ð@pß ySA,REREKaR8.81AKurafefTf <0279>Tj /T1\_2 1 Tf (S)Tj (t)Rj (r)Tj 3.1sj (r)Tj 3.1aj 3.102 0 6.751fe

(Resigned) TOKUMITSU, Yujiro y y  
 Assistant Professor(Special appointment)  
 è ž\è 2 yDepar tment of Peace and Coexistence  
 ç ¶ [ ~ þ q ^ ¶ È è • £  
 Ú 8 ñ f y ó ' ç T Š £ y Š Y ^ y Z € »  
 (Expired) KAGAWSA, Megumi y yResearcher

! Ä ž i » y " ENJOJTUSBUJWF 4UBGGŠ  
 ) Ç Z  
 " õ y ! y 8 İ y á æ § ñ ç " Ó \* ç R ž r p £  
 (Transferred) SOKOOSHI, Yuji yChief General Affairs  
 Group(Finance) ç R ž ~ i ž è R ñ ç " Ó \* • £

Ö ¶ ¼ g w µ - ' á " ç  
 & O U S B O D F & Y B N J O B U J P O 4 D I F E Y M F  
 ç R á D Ö ¶ £  
 ' P S " Q S J M & O S P M M N F O U

R á á  
 12 D17 Ô™ 12 D24 Ô Ä² ù \* ! Ç 8 ç 0 Á w ^ £  
 Dec. 17–Dec. 24, 2013 Application period for  
 preliminary evaluation

R á á  
 D20 Ô™ D24 Ô & { ! Ç 8  
 D12 Ô™ D13 Ô Ö ¶ ¼ g  
 D20 Ô ù " C ^  
 Jan. 20 –Jan. 24, 2014 Submission of application fom  
 Feb. 12 – Feb. 13, 2014 Entrance examination  
 Feb. 20, 2014 Announcement of admission

Ò á D y \$ œ ] ™ 8 . f  
 % P D U P S B M 1 S P H S B N D P N Q M F U F E J O 4 F Q  
 % C J ¶ • È y Division of Development Science  
 y È ç ° y ¶ \ È £ 7 (including 7 foreign students)  
 - - = • È y Division of Educational Development and  
 Cultural and Regional Studies  
 y È ç ° y ¶ \ È £ 4 (including 4 foreign students)  
 - - ~ Z € Education, Research 5  
 ñ ž Public Administration 0  
 ½ ' À Private Company 0  
 ¢ , . / R , Auxiliary Organization 0

< ~ q i î < Return to home country, etc. 6  
 Ò á D y \$ œ ] ™ 8 . f  
 . B T U F S Ÿ 1 S P H S B N D P N Q M F U F E J O 4 F Q  
 % C J ¶ • È y Division of Development Science  
 y 36 È ç ° y ¶ \ 36 È £ 36 (including 36 foreign students)  
 - - = • È y Division of Educational Development and  
 Cultural and Regional Studies  
 y È ç ° y ¶ \ È £ 5 (including 4 foreign students)  
 - » School Teaching 0  
 ñ ž Public Administration 1  
 ½ ' À Private Company 1  
 ¢ , . — R , Auxiliary Organization 0  
 ¶ Proceed to Doctoral Program 4  
 < ~ q i î < Return to home country, etc. 35

, i . Û Æ " ™  
 ç R á D ™ D £  
 \* % & \$ \$ B S F F S 4 F N J O B S ç ™ £

Û H s M — , i . Û Æ " ™  
 y % 5 Ô Ì • R 25 á 7 D 16 Ô y 18 • 10 ™ 19 • 40  
 y % 5 Ô t • IDEC G q ^ è  
 y è y y £ • ç ² £ M — ; İ ' h Ð \* » y ¢ b 2 ¢ ^  
 y € C : • 22 È

Û H s M — , i . Û Æ " ™  
 y % 5 Ô Ì • R 25 á 10 D 30 Ô y 18 • 10 ™ 19 • 40  
 y % 5 Ô t • IDEC G q ^ è  
 y è y y £ • ž ~ ³ " ~ È ž Ä Ò Û q þ y P % C è  
 y y y y y y Ô ; ' İ ^  
 y € C : • 27 È

Û H s M — , i . Û Æ " ™ M ; p † X t x ^  
 y % 5 Ô Ì • R 25 á 11 D 29 Ô y 18 • 10 ™ 19 • 40  
 y % 5 Ô t • IDEC G q ^ è  
 y è y y £ • ž ž ² M ; Ä . i » " Ö y \$ { m ] ^  
 y € C : • 27 È

Û H s M — , i . Û Æ " ™ ç Þ \* O U F S O B U J P O B M & E V D B U J P O  
 % F W F M P Q N F O U ' P S V N V q w z 5 £ M — ®  
 M / ( 0 w Æ ^ q " " M § w h Š w " È ^ ^  
 y % 5 Ô Ì • R 25 á 12 D 14 Ô y 16 • 00 ™ 18 • 00  
 y % 5 Ô t • G ¶ q G B q è y  
 y è y y £ • › † æ b Æ ^ O è " ç Ä ~ İ ' ä i ~  
 y y y y y y ' ß İ y I D „ ° à ^  
 y € C : • 17 È

fw \*%&\$ w^V
c a D™ D£
OUIFS "DUJWJUJFT BOE &WFOU

Ü Ž ž² h æ Ž ž G S ž í U \*%&\$ › Z ð 2013/8/23 £
Ø \*%&\$ XBT WJTJUFE CZ %S 5PTIJLP "
IBSMJBNFOUBSZ 7JDF .JOJTUFS GPS 'PSFJHO
PG +BQBO (2013/8/23)

Ü G ¶ w H „ 2 % — § = Ä Ä ® ž ´ ž w è q w † ¶
- È - Ó é - ã Ü t T T " - ï " ³ ž Ü › » ~
Í à ž Ó G ¶ q A (2013/6/12)

Ü + \* \$ " 1 & " \$ & Ó é ´ £ « Ä t ´ “ ž Ñ “ Ç µ » ï S Ì
U \* % & \$ › Z ð 2013/9/2 £

Ø "HSFFNFOU PO "DBEFNJD &YDIBOHFØ C%&\$ FFBT WJTJUFE CZ "GHIBOJTUBO HPWFSC
+BQBO 6OJWFSTJUZ \$POTPSUJVN GPS GIG FBDJFBMT OE VQQPSUFE CZ +\*\$" 1&"\$& QSPKFD
)VNBO 4FDVJSJUZ JO "TJB BOE 1BZBQ 6OJWFSTJUZ PG
5IBJMBOE XBT DPODMVEFE (2013/6/12)

Ü Ä Ÿ Ü É ° é G ¶ w - » U \* % & \$ › Z ð 2013/10/1 £
Ø \*%&\$ XBT WJTJUFE CZ UIF GBDVMUZ NFNCFS
6OJWFSTJUBT %JQPOFHPS PG \*OEPOFTJB (2013/10/1)

Ü G ¶ w H „ 2 % — § = Ä Ä ® ž ´ ž w è q w † ¶
- È - Ó é - ã Ü t T T " - ï " ³ ž Ü › » ~
½ £ ï Ü G ¶ S Ì - æ S ¶ æ q A (2013/6/19)

Ü ž ï ž w + \* \$ " Z . » U \* % & \$ › Z ð (2013/10/11)

Ø "HSFFNFOU PO "DBEFNJD &YDIBOHFØ C%&\$ FFBT WJTJUFE UIF DPVSUFTZ WJTJU CZ
+BQBO 6OJWFSTJUZ \$POTPSUJVN GPS SJIFBODFF TB G SPN ;BNCJB (2013/10/11)
)VNBO 4FDVJSJUZ JO "TJB BOE 'BDVMUZ PG 1PMJUJDBM
4DJFODF BOE 1VCMJD "ENJOJTUSBUJUP O%&\$ J'BOI Ä .BJ › ï ¢ 2013/11/1 £
6OJWFSTJUZ PG 5IBJMBOE XBT \*%&\$ ODIM V E F "E XBT IFME BU \*%&\$
(2013/6/19) (2013/11/1)

Ü G ¶ w H „ 2 % — § = Ä Ä ® ž ´ ž w è q w † ¶
- È - Ó é - ã Ü • ž a y 8 - " µ › \* % & \$ p ï ¢
2013/8/3-8/14 £

Ü M — Z € J Ñ q \* á G æ . Ü Æ " ® M — ›
B Q " - › % 5 2013/11/2 £
Ø \*%&\$ UI "OOJWFSTBSZ 4FNJOBS -FU T UIJ

Ø \$BNQVT "TJB 1FBDF BOE )VNBO 4FDVJSJUZ JOUFSOBUJPOBM DPPQFSBUJPO; XBT
"TJB 1")4" 1SPHSBN )JSPTIJNB 4IPSU%&\$ (2013/11/2)
4UVEZ 1SPHSBN; XBT IFME (2013/8/3-%&\$
8/14) Ü H „ Ü æ f ~ Ä ž t q @ { › A 2013/11/13 £
Ø .FNPSBOEVN PG 6OEFSTUBOEJOH XBT DPODM

Ü (&-T ± Ü " - " µ @ % FWFMPQNFOU XJUIJO CFUXFFO UIF 8PSME #BOL 5PLZP OGGJDF BOE
-PX \$BSCPO 8PSME 1SFQBSJOH 1SPGFTJ\$PFOENBT 6OJWFSTJUZ (2013/11/13)

\$MJNBUF /BHPUJBUJPOT BOE 4VTUBJOB CMF (SPXUI
1PMJDJFT › \*%&\$ 2013/8/7-8/20 £ Ü @ Ü µ Ä . % (T › B Q " - Ü Æ " › % 5 2013/11/18 £
Ø (&-T 4VNNFS \$PVSTF %FWFMPQNFOU JOBS PO 1PTU r.% (T 8IBU DPNFT BGUFS U
XJUIJO " -PX \$BSCPO 8PSME 1SFQBSJBOHFME BU \*%&\$ (2013/11/18)
1SPGFTTJPOBMT GPS \$MJNBUF /BHPUJBUJPOT BOE
4VTUBJOB CMF (SPXUI 1PMJDJFT; XBT IFME BU \*%&\$
(2013/8/7-8/20)

IDEC 広報委員会 (2013 年度)

Ö \*%&\$ 1VCMJD 3FMBUJ POT \$PNNJUUFF
, "8".63" ,FOTVLF 7JDF \$IBJS Ü Ÿ Ĩ , "/&, 0 4IJOKJ - é ó ĩ Ç á " µ è » " \$ Brp £ , 0 ; 6 , " & JKJ & EJU
• { [ \* 50 : VUBLB

http://www.hiroshima-u.ac.jp/idec/index.html