

他作

予

他作

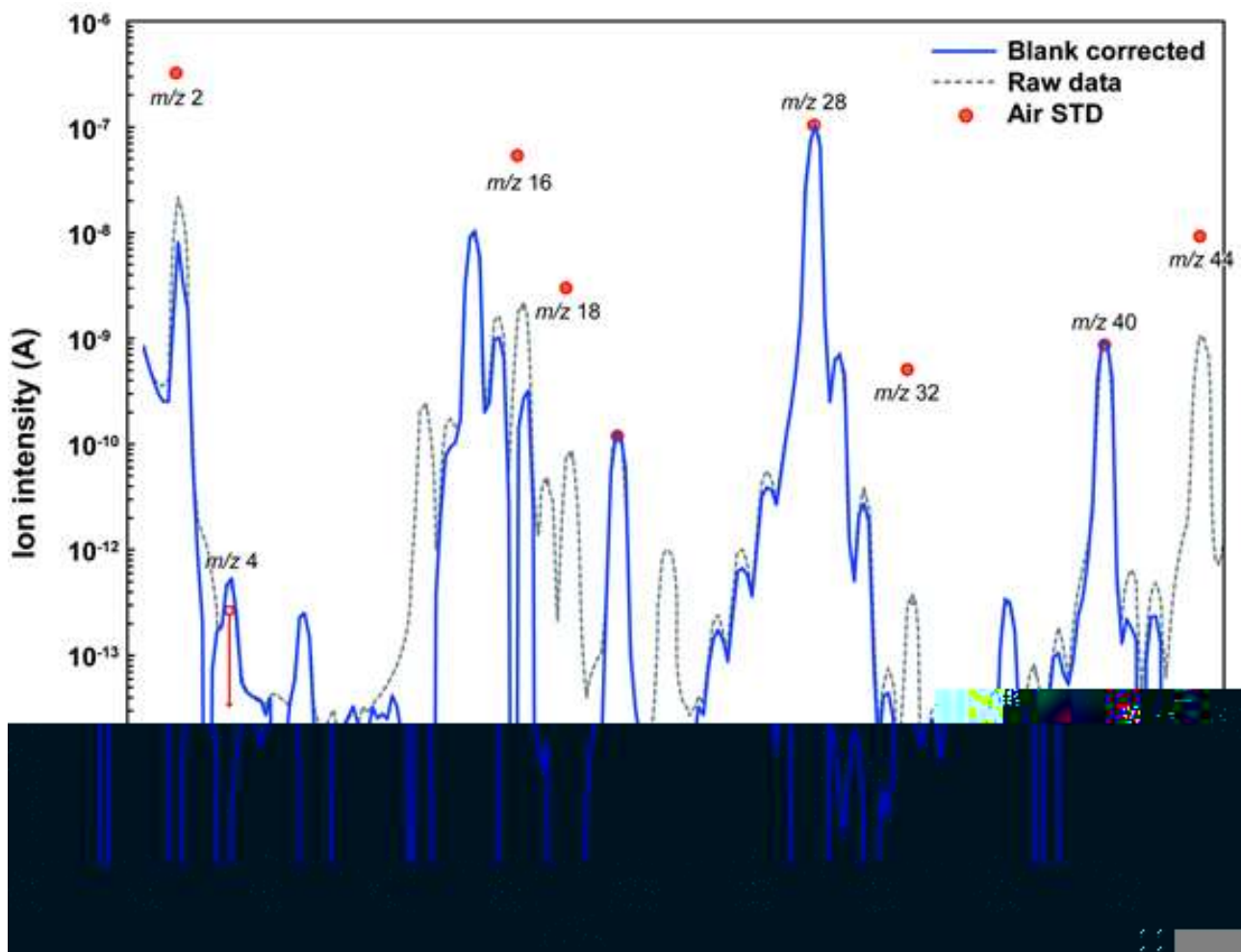
化

〒

本件内容の問い合わせ先

研究内容、論文に関すること
藪田 ひかる



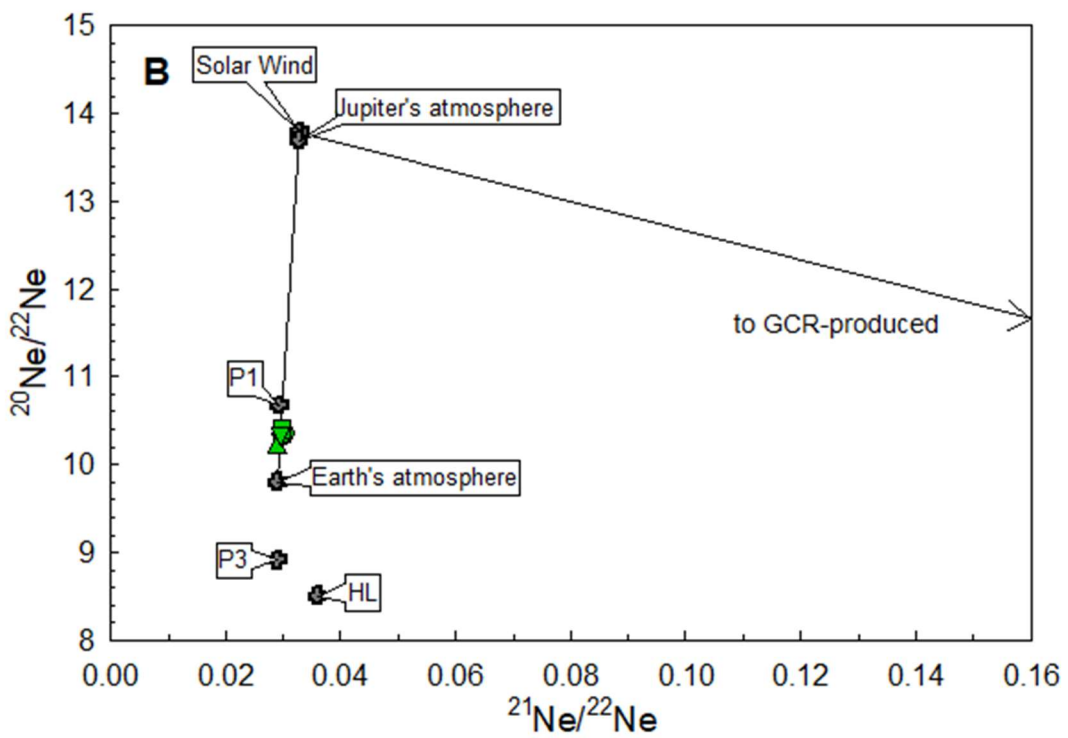
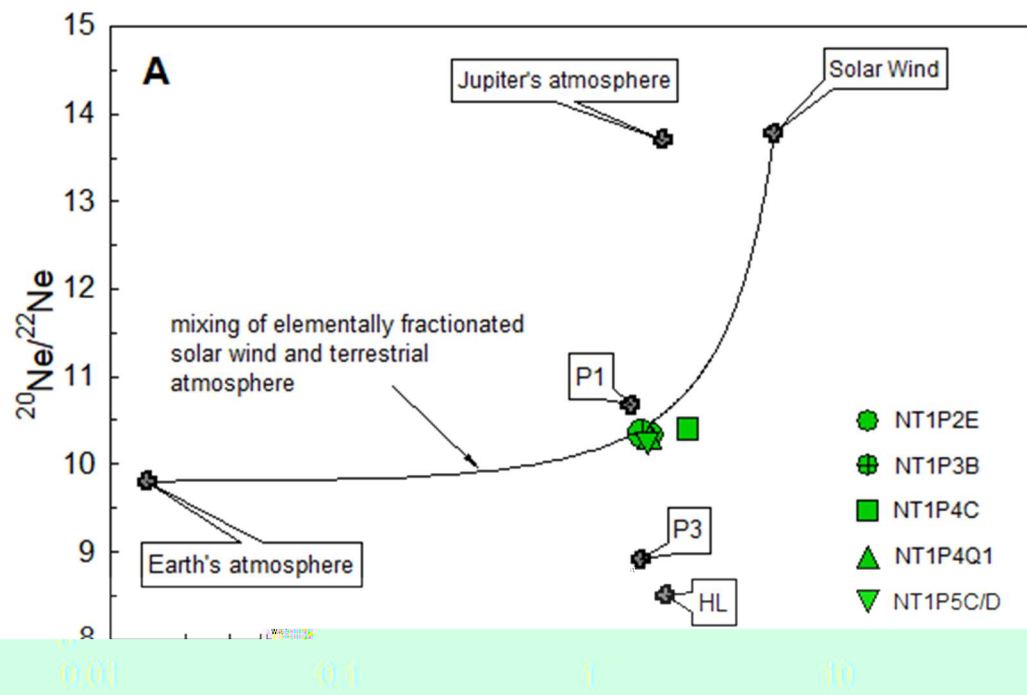


他

m/z

m/z

m/z

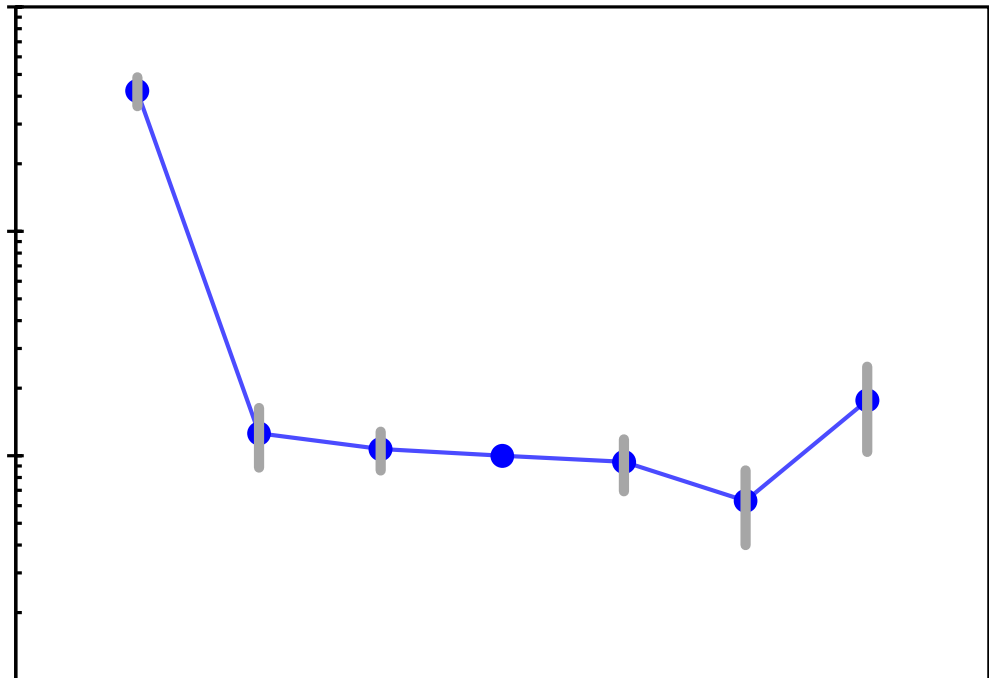


予

子

子

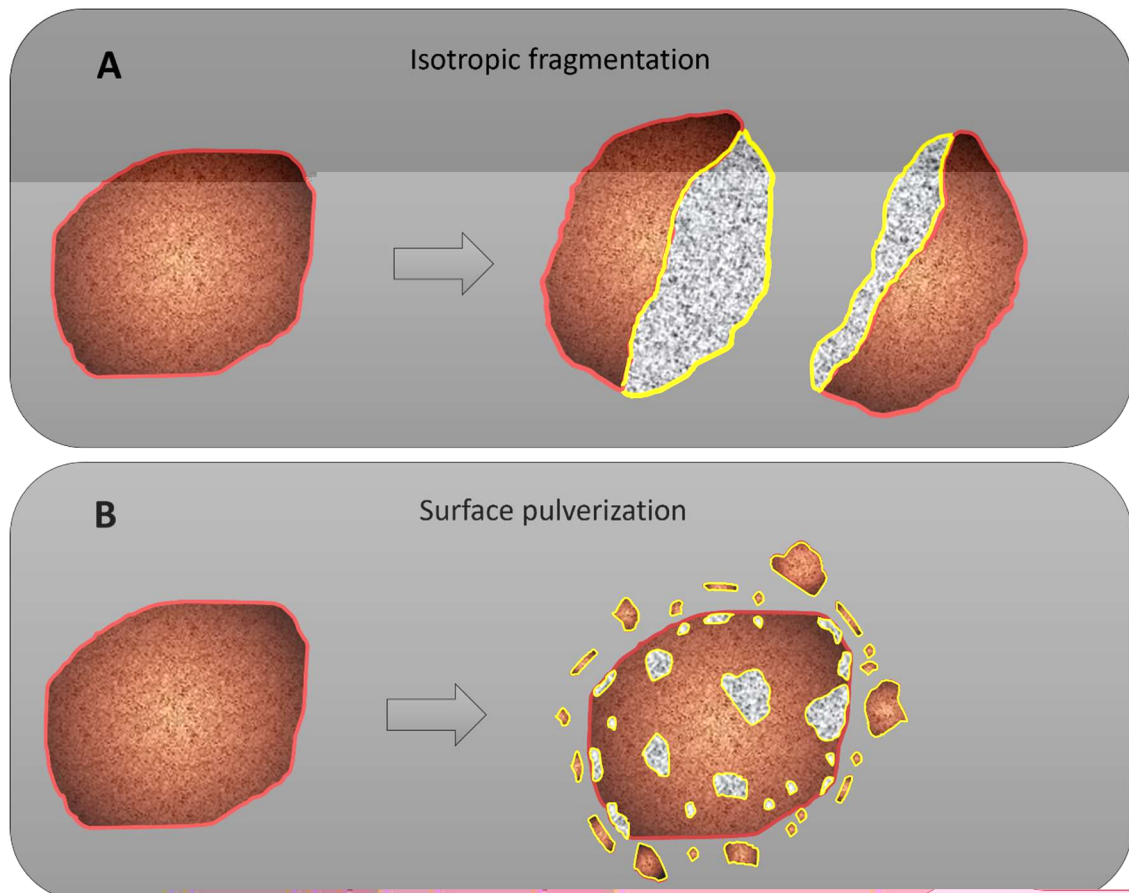
他 m/z



m/z

作

°C



雑誌名 : **Science Advances**

論文タイトル : **Fungal asteroid gas sampled directly by the Hayabusa2 mission: A tissue box from Ryugu**

著者 : **R. Okazaki¹, Y.N. Mura², Y. Takano³, H. Sawada⁴, K. Sakamoto⁴, T. Yada⁴, K. Yanada⁵, S. Kawaguchi^{6,7}, Y. Matsu^{6,7}, K. Hazizone⁸, A. Ishida⁹, M.W. Brodey¹⁰, B. Marty¹⁰, D. Byrne¹⁰, E. Furi¹⁰, A. Meshik¹¹, O. Pavlyutseva¹¹, H. Busenari¹², M.E.I. Riebe¹², J. Gilmore¹³, J. Park^{14,15}, K.**

**Bejo¹⁶, K Richter¹⁷, S Saka³, S Sekimoto¹⁸, F Kitajima¹, S.A. Crowther¹³, N Iwata¹⁹,
N Shira^{20,21}, M Ebihara²⁰, R Yokochi²², K Nishizumi²³, K Nagao²⁴, JI Lee²⁴, P. Clay¹³,
A. Karo²⁵, MW Caffee^{26,27}, R Uenuki²⁸, M Inagaki¹⁸, D Krietsch¹², C Mader¹², M Yanamoto¹,
L Fawcett¹³, T. Lawton¹³, T. Nakamura⁹, H Naada¹, T. Noguchi²⁹, H Yabuta³⁰, H Yuimoto¹⁶,
Y. Tsuda⁴, S. Watanabe²⁸, M Abe^{4,31}, M Arakawa³², A. Fujii⁴, M Hayakawa⁴, N Hirata³²,
N Hirata³³, R Honda³⁴, C Honda³³, S. Hosoda⁴, Y. Iijima⁴, H Ikeda⁴, M Ishiguro³⁵, Y. Ishihara³⁶,
T. Iwata⁴, K Kawahara⁴, S. Kiluchi^{37,38}, K Kitazato³³, K Matsunoto^{34,38}, M Matsuda³⁹,
T. Mchikani⁴⁰, Y. Minasu⁴, A. Miura⁴, T. Murota²⁵, SaSou Nakazawa⁴, N Naniki^{34,38},
Hoda^{34,38}, R Noguchi⁴¹, N Ogawa⁴, K Ogawa³⁶, T. Okada^{4,42}, C Okamoto³⁴, G. Oro⁴³,
M Ozaki^{4,31}, T. Saki^{4,31}, N Sakatani⁴⁴, H Senhu³⁷, Y. Shinaki⁴, K Shira^{4,32}, S. Sugita²⁵,
Y. Takei⁴, H Takeuchi⁴, S. Tanaka⁴, E. Tasumi^{25,45}, F. Teufel⁴⁶, R. Tsubizaki⁴, K. Wada³⁷,
M Yanada³⁷, T. Yanada⁴, Y. Yanamoto⁴, H Yao^{4,31}, Y. Yokota⁴, K. Yoshihara⁴,
M Yoshikawa^{4,31}, K Yoshikawa⁴, S. Fuyua⁴, K. Hatakechi⁴⁷, T. Hyashi⁴, Y. Hitomi⁴⁷,
K. Kumagai⁴⁷, A. Myazaki⁴, A. Nakato⁴, M. Nishimura⁴, H. Sogina⁴⁷, A. Iwanae⁴⁷,
D. Yanamoto^{4,48}, K. Yagata⁴, M. Yoshitake⁴, R. Fuka⁴, T. Usui⁴, T. Icland⁴⁹, HC Comdly Jr.⁵⁰,
DS. Laretta⁵¹, S. Tadibara⁵²**

¹Department of Earth and Planetary Sciences, Kyushu University, Fukuoka, 8190085, Japan

²Earthquake Research Institute, The University of Tokyo, Tokyo, 1130032, Japan

³Biogeochemistry Research Center, Japan Agency for Marine Earth Science and Technology (JAMSTEC), Yokosuka, Kanagawa, 2370061, Japan

⁴Institute of Space and Astronautical Science, Japan Aerospace Exploration Agency (JAXA), Sagamihara, 2525210, Japan

⁵Department of Chemical Science and Engineering, Tokyo Institute of Technology, Yokohama, Kanagawa, 2268503, Japan

⁶Research Institute for Global Change, JAMSTEC, Yokosuka, 2370061, Japan

⁷Institute for Extra-cutting-edge Science and Technology, Advanced Research (X-sta), JAMSTEC, Yokosuka, 2370061, Japan

⁸Faculty of Science, Ibaraki University, Mito, 3108512, Japan

⁹Department of Earth Science, Tohoku University, Sendai, 9808578, Japan

¹⁰Université de Lorraine, CNRS, CRPG, F-54000 Nancy, France

¹¹Physics Department, Washington University, Saint Louis, MO, 63130, USA

¹²Institute of Geodesy and Petrology, Eidgenössische Technische Hochschule (ETH) Zürich, 8092 Zürich, Switzerland

¹³Department of Earth and Environmental Sciences, The University of Manchester, Manchester, M139PL, UK

¹⁴Physical Sciences, Kingsborough Community College, The City University of New York, Brooklyn, NY, 11235, USA

¹⁵Department of Earth and Planetary Sciences, American Museum of Natural History, NY, 10024, USA

¹⁶Department of Earth and Planetary Sciences, Hokkaido University, Sapporo, 0600810, Japan

¹⁷Astromaterials Research and Exploration Science, Mailcode X12, National Aeronautics and Space Administration (NASA), Johnson Space Center, Houston, TX, 77058, USA

¹⁸Institute for Integrated Radiation and Nuclear Science, Kyoto University, Osaka, 5900494, Japan

- ¹⁹Faculty of Science, Yamagata University, Yamagata, 9808560, Japan
- ²⁰Graduate School of Science and Engineering, Tokyo Metropolitan University, Hachioji, Tokyo, 1920897, Japan
- ²¹Department of Chemistry, Faculty of Science, Kanagawa University, Hiratsuka, Kanagawa, 2591293, Japan
- ²²Department of the Geophysical Sciences, The University of Chicago, Chicago, IL, USA.
- ²³Space Sciences Laboratory, University of California, Berkeley, CA, 94720, USA.
- ²⁴Division of Earth Sciences, Korea Polar Research Institute, Incheon, 21990, Korea
- ²⁵School of Science, The University of Tokyo, Tokyo, 1130033, Japan
- ²⁶Department of Physics and Astronomy, Purdue University, West Lafayette, IN 47907, USA.
- ²⁷Department of Earth, Atmospheric, and Planetary Sciences, Purdue University, West Lafayette, IN 47907, USA.
- ²⁸Department of Earth and Environmental Sciences, Nagoya University, Nagoya, 4648601, Japan
- ²⁹Division of Earth and Planetary Sciences, Kyoto University, Kyoto, 6068502, Japan
- ³⁰Department of Earth and Planetary Systems Science, Hiroshima University, Higashi-Hiroshima, 7398536, Japan
- ³¹Department of Space and Astronautical Science, The Graduate University for Advanced Studies, Hayama, 2400193, Japan
- ³²Department of Planetary Science, Kobe University, Kobe, 6578501, Japan
- ³³Aizu Research Cluster for Space Science, University of Aizu, Aizu Wakamatsu, 9658580, Japan
- ³⁴Center of Data Science, Ehime University, Matsuyama, 7908577, Japan
- ³⁵Department of Physics and Astronomy, Seoul National University, Seoul, 08826, Republic of Korea
- ³⁶JAXA Space Exploration Center, JAXA, Sagamiha, 2525210, Japan
- ³⁷Planetary Exploration Research Center, Chiba Institute of Technology, Narashino, 2750016, Japan
- ³⁸National Astronomical Observatory of Japan, Mitaka, 181-8588, Japan
- ³⁹Geological Survey of Japan, National Institute of Advanced Industrial Science and Technology, Ibaraki, 3058567, Japan
- ⁴⁰Faculty of Engineering, Kinki University, Higashi-Hiroshima, 7392116, Japan
- ⁴¹Faculty of Science, Niigata University, Niigata, 9502181, Japan
- ⁴²Department of Chemistry, The University of Tokyo, Tokyo 1130033, Japan
- ⁴³Research and Development Directorate, JAXA, Sagamiha, 2525210, Japan
- ⁴⁴Department of Physics, Rikkyo University, Tokyo, 171-8501, Japan
- ⁴⁵Instituto de Astrofísica de Canarias, University of La Laguna, Tenerife, Spain
- ⁴⁶Department of Mechanical Engineering, Kanagawa Institute of Technology, Atsugi, 2430292, Japan
- ⁴⁷Maine Works Japan Ltd, Yokosuka, 2370083, Japan
- ⁴⁸Department of Earth and Planetary Science, Tokyo Institute of Technology, Ookayama, Tokyo, 1528550, Japan
- ⁴⁹School of Earth and Environmental Sciences, The University of Queensland, St Lucia QLD, 4072, Australia
- ⁵⁰Department of Geology, School of Earth and Environment, Rowan University, Glassboro, NJ, 08028, USA.
- ⁵¹Lunar and Planetary Laboratory, University of Arizona, Tucson, AZ, 85721, USA.
- ⁵²UTokyo Organization for Planetary and Space Science, The University of Tokyo, Tokyo, 1130033, Japan

†Deceased