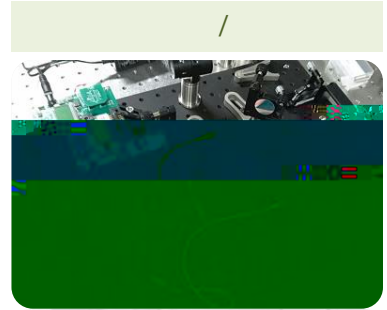
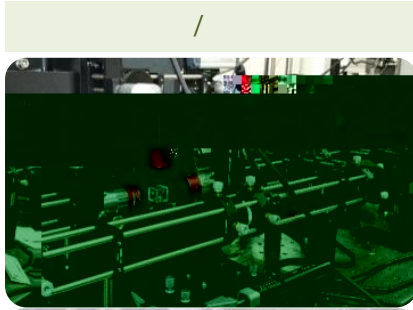
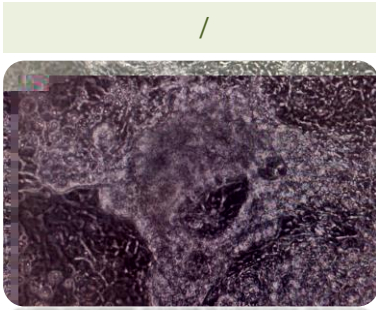
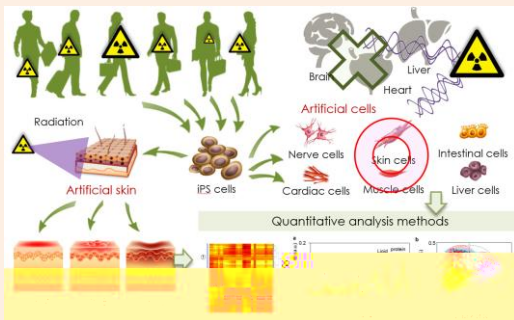
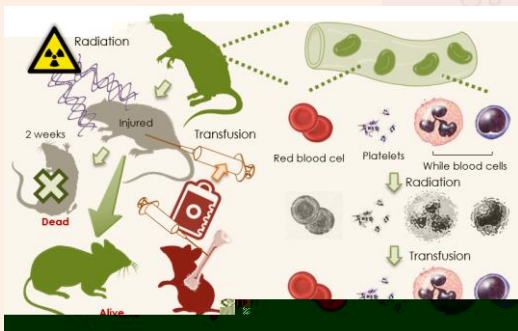


- ✓
- ✓
- ✓



広島大学

**Naka K**, et al. The lysophospholipase D enzyme Gdgd3 is required to maintain chronic myelogenous leukaemia stem cells. *Nat Commun.* 11, 4681 (2020).

Germond A, Panina Y, Shiga M, Niioka H, **Watanabe TM**. Following Embryonic Stem Cells, Their Differentiated Progeny, and Cell-State Changes During iPS Reprogramming by Raman Spectroscopy. *Anal Chem.* 2020, 92, 14915 (2020).

David BG, **Fujita H**, Yasuda K, Okamoto K, Panina Y, Ichinose J, Sato O, Horie M, Ichimura T, Okada Y, **Watanabe TM**. Linking substrate and nucleus via actin cytoskeleton in pluripotency maintenance of mouse embryonic stem cells. *Stem Cell Res.* 41:101614 (2019).