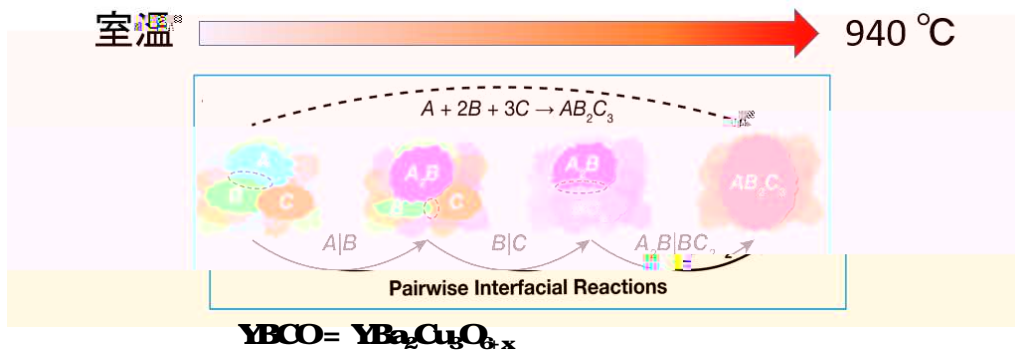
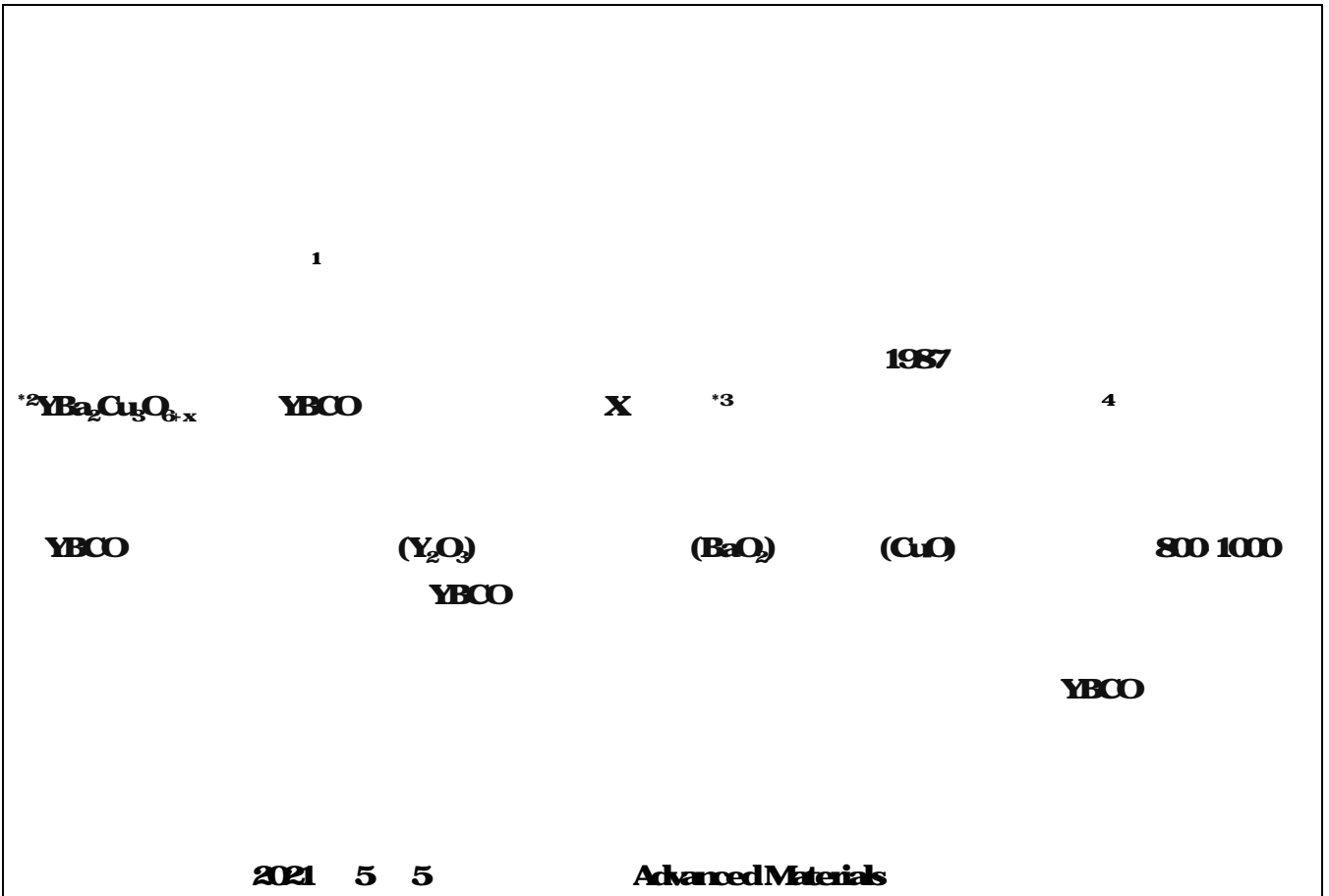


2021/5/10



X



3

X

A B C 3

2

A B A C B C 3

2

YBCO
(CuO)
YBCO

YBa₂Cu₃O_{6-x}
800 1000

1987

(Y₂O₃)

YBa₂Cu₃O_{6-x}
(BaCO₃),

X

(BaCO₃)

(BaO)

30

YBCO

X

1

YBCO

2

YBCO

2

J16K21724, J19H04682, J20K0124

()

(MASACU)

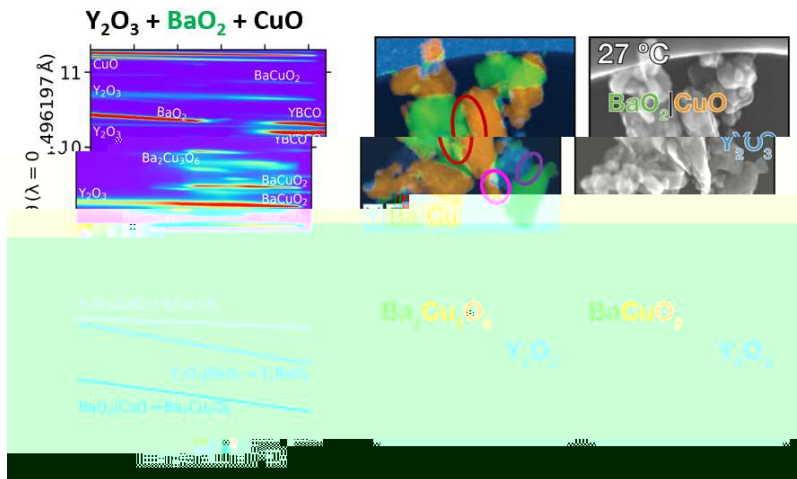
Observing and modeling the sequential pairwise reactions that drive solid state ceramic synthesis

1 Christopher J Bartel² 3 3 4 4
Yongning Wang⁵ 6 6 7 **Nataly Carolina Rosero Navano¹**
1 Gerhard Ceder^{2,8} Wenhao Sun⁹ 1 2
3 4 5
6 7 8
9

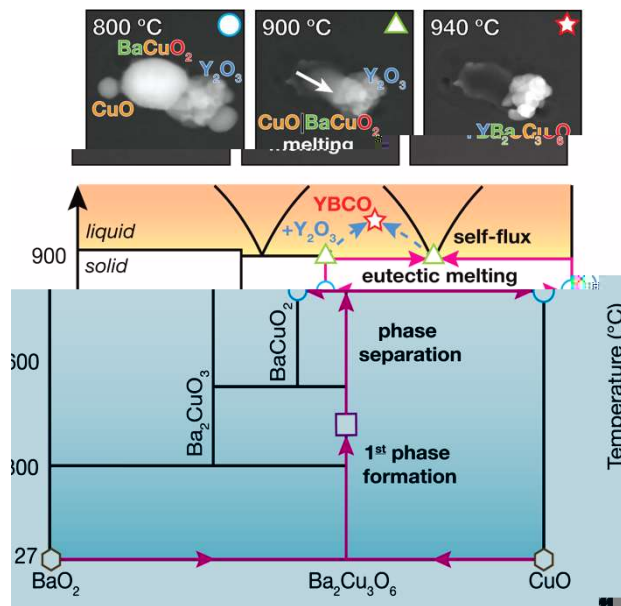
Advanced Materials

10.1002/adma.202100812

2021 5 5



1 YBCO



1 ...
 600

2 ... **25K**

3 **X** ...
 SPing 8 **X**

4 ...

ローレンス・バークレー
 国立研究所
 第一原理計算データベース
 "Materials Project"



理化学研究所
 大型放射光施設
 "SPring-8"
In situ XRD (BL02B2)



日立ハイテク
 電子顕微鏡 "HF-5000"

HITACHI
 Inspire the Next

