



10

11

100

29

SPLENDOR PLAN 2017

100

28

AKPI®

BKPI®

SPLENDOR PLAN 2017

28

11

SPLENDOR PLAN 2017

31

31

[https://www.hiroshina-u.ac.jp/about/business\\_info/third\\_term](https://www.hiroshina-u.ac.jp/about/business_info/third_term)

31

28 31

[https://www.hiroshina-u.ac.jp/about/HU\\_self\\_evaluation/uni\\_v\\_evaluation/report](https://www.hiroshina-u.ac.jp/about/HU_self_evaluation/uni_v_evaluation/report)

10

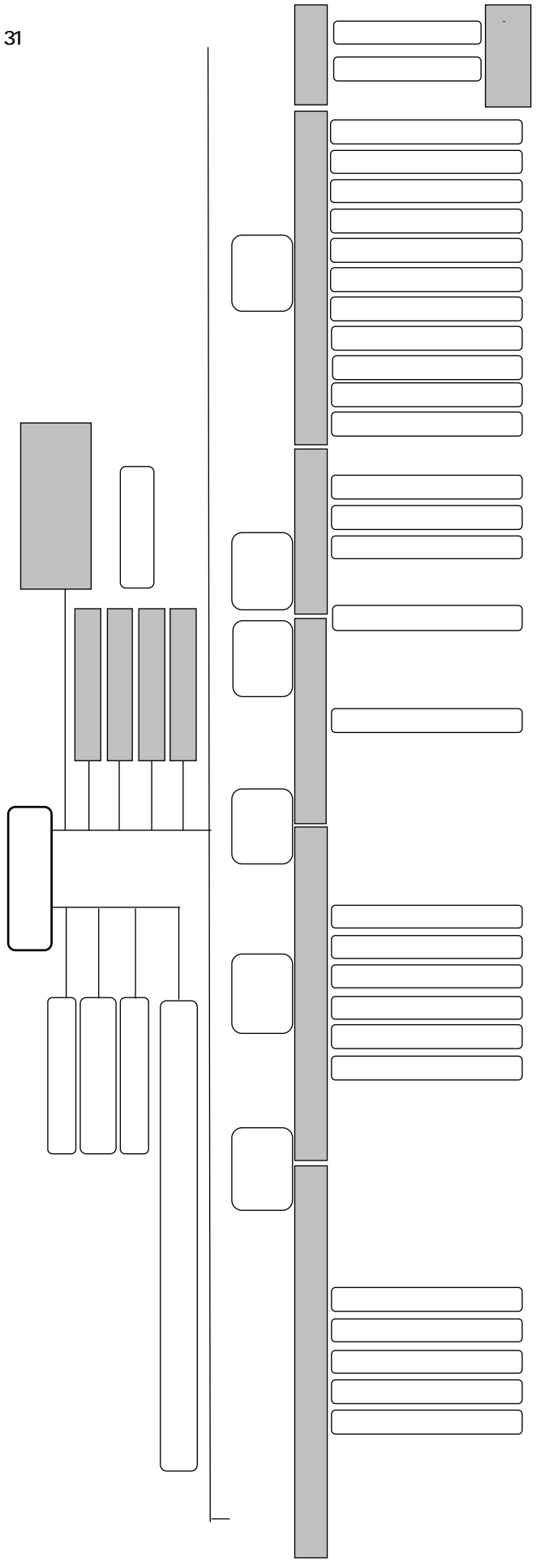
100

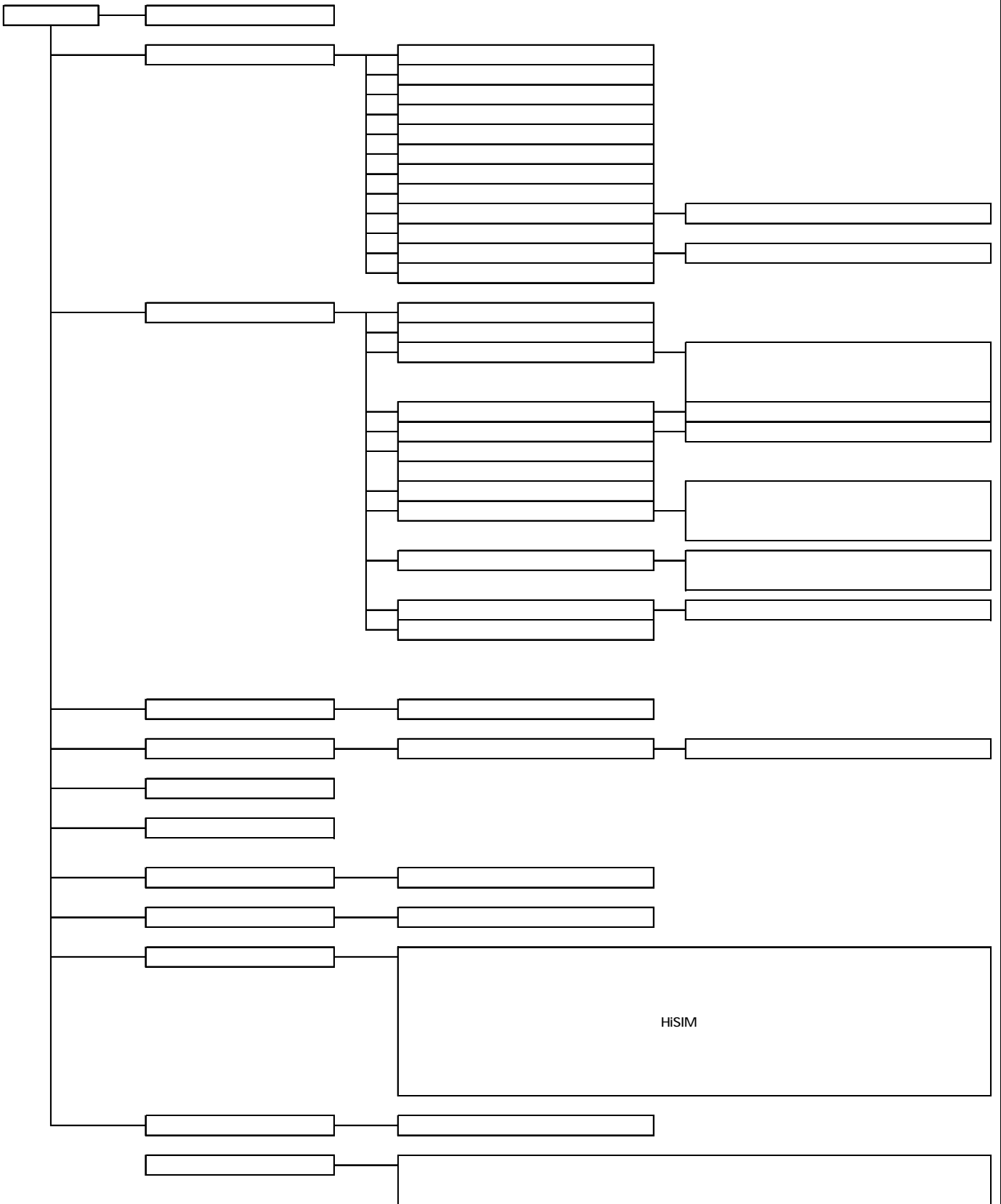
100

—

|

|





--

--

--


--



[https://www.hiroshina-u.ac.jp/about/public\\_info/other\\_public\\_info/financial\\_affairs/financial\\_info](https://www.hiroshina-u.ac.jp/about/public_info/other_public_info/financial_affairs/financial_info)

	174,967,908,703		40,065,300,434
	173,167,518,522		22,377,702,942
	96,853,113,686		
	57,000,000		3,076,021,220
	100,602,450,304		11,476,140,000
	51,220,639,132		741,600,336
	16,757,811		741,600,336
	7,373,367,859		280,712,790
	5,078,284,880		2,113,123,146
	573,223,118		20,628,188,032
	518,368,295		48,098,664
	54,930,673,407		8,170,957,740
	45,053,714,361		8,139,401,780
	13,555,355,850		4,269,729,848
	1,224,098,777		
	1,800,390,181		60,693,488,466
	30,017,083,526		
	16,709,044,759		147,209,460,827
	5,611,520,000		147,209,460,827
	5,582,852,732		15,937,982,742
	29,131,462		13,020,025,678
	2,084,534,573		144,291,503,763
	204,984,992,229		204,984,992,229

[https://www.hiroshina-u.ac.jp/about/public\\_info/other\\_public\\_info/financial\\_affairs/financial\\_info](https://www.hiroshina-u.ac.jp/about/public_info/other_public_info/financial_affairs/financial_info)

(A)	76,684,693,820
	74,415,321,994
	4,006,560,893
	5,434,328,710
	19,391,854,266
	1,516,843,773
	39,802,260,376
	4,263,473,976
	2,023,388,886
	202,018,205
	43,964,735
(B)	78,653,422,039
	25,440,973,085
	8,772,887,950
	31,584,787,371
	12,854,773,633
(C)	1,133,290
(D)	194,862,685
B-A+C+D	2,162,457,614

[https://www.hiroshina-u.ac.jp/about/public\\_info/other\\_public\\_info/financial\\_affairs/financial\\_info](https://www.hiroshina-u.ac.jp/about/public_info/other_public_info/financial_affairs/financial_info)

(A)	6,195,055,339
	40,725,529,818
	29,294,619,205
	25,524,930,000
	8,553,165,904
	31,258,242,857
	10,878,865,601
(B)	3,510,796,016
(C)	2,022,279,373
(D)	0
E=A+B+C+D	7,683,571,982
(F)	6,025,472,777
(G=F+E)	13,709,044,759

[https://www.hiroshina-u.ac.jp/about/public\\_info/other\\_public\\_info/financial\\_affairs/financial\\_info](https://www.hiroshina-u.ac.jp/about/public_info/other_public_info/financial_affairs/financial_info)

	28,038,737,687
	76,710,416,522
	48,671,678,835
	2,078,657,021
	0
	0
	0
	2,178,071
	178
	75,325,714
	239,145,218



	27	28	29	30	
	205,514	200,995	198,774	198,962	204,985
	62,603	59,391	57,646	56,397	60,663
	142,911	141,604	141,128	142,565	144,292
	74,783	72,828	73,311	73,981	76,685
	74,649	73,734	74,755	76,876	78,653
	4	1,053	1,579	2,939	2,162
	4,469	5,548	6,586	8,660	6,195
	4,749	2,634	4,027	4,150	3,511
	2,143	2,191	2,041	2,265	2,022
	2,538	3,261	3,780	6,025	13,709
	34,423	30,850	29,465	28,145	30,006
	31,174	28,337	27,705	26,443	28,039
	74,811	72,844	73,325	74,007	76,710
	43,637	44,506	45,620	47,564	48,672
	2,456	2,396	2,289	2,233	2,079
	17				
	2	0	2	2	2
	1	0	0	3	0
	54	29	7	37	75
	737	86	676	632	239
	91	171	139	58	50

430  
 897      1,262      2.9%      30      371      28      6.1%  
 672      31,585      30      462

	27	28	29	30	
	447	152	180	1,633	1,262
	598	1,052	1,130	1,134	672
	2	1,761	1,862		
				3,282	3,700
				67	110
				113	97
				359	341
				1,118	1,106
				836	782
				429	244
				104	15
				1,048	964
				1,200	1,236



789

688

172

115

0

1,081

0

414

B2 B3

0

387

	72,626	74,534	71,298	71,959	72,414	73,776	72,936	77,440	80,048	80,981
	26,007	26,545	24,888	25,245	25,045	25,400	25,163	25,436	25,333	25,555
	2,638	2,223	1,934	1,781	1,924	2,193	1,502	1,932	2,621	2,636
	8,533	8,630	8,630	8,624	8,663	8,704	8,673	8,745	8,679	8,545
	27,182	28,472	28,341	28,291	28,166	28,925	28,728	30,610	30,209	31,245
	8,216	8,664	7,505	8,018	8,616	8,464	8,870	10,717	13,146	13,000
	72,626	73,154	71,298	69,958	72,414	71,134	72,936	72,170	80,048	77,845
	34,936	35,641	34,184	33,614	34,258	33,721	34,463	33,625	34,840	34,157
	26,465	26,463	27,289	26,522	27,113	26,610	27,441	27,180	29,391	28,539
	11,165	11,050	9,825	9,822	11,043	10,804	11,032	11,365	15,817	15,149
	0	1,380	0	2,001	0	2,642	0	5,270	0	3,136

78,653,422,039  
31,584,787,371 40.2

25,440,973,085  
21,627,661,583 27.5

32.3

Global Peace Leadership Program

29

20

10

BEM-j

2,700

BEM-j

28

45

BEM-j

BEM-j

41

37

BEM

BEM

4,200

PDCA EBPM

BEM-j

14

UCARO

UCARO

TOW&COM

SDGs

10

4,000

15

11

28

28





21

30

30

					1,055,783,480	68.8		
					394,237,200	25.7	84,540,702	5.5
				1,206,029,221	83.9			)
76,117,517	5.3		119,738,860	8.3	35,634,238	2.5		

					647,595,423	54.4		
					504,746,216	42.4	37,065,848	3.2
				750,700,178	88.5			)
49,856,389	5.9		35,910,885	4.2	12,155,150	1.4		

21

Institutes

INEI International Network of Educational Institutes

		11	11	13			15	
	INEI							
					1,951,204,569	51.9		
					1,641,283,261	43.7	166,099,625	
4.4					2,215,209,114	83.5		
)		183,286,676	6.9	185,281,641	7.0	68,769,025	2.6	

29

				829,431,439	44.1		
				1,017,690,208	54.1	34,902,897	1.8
		945,092,964	85.9				)
58,014,707	5.3	70,697,865	6.4	26,528,949	2.4		

Twitter

61

200

				1,029,001,140	55.8		
				513,131,274	27.8	301,989,192	16.4
		1,211,034,720	75.7				)
64,339,164	4.0	234,610,134	14.7	90,151,551	5.6		

				344,869,486	55.4		
				87,152,853	14.0	190,998,722	
30.6				409,943,932	64.2		
)	23,827,042	3.7	80,327,027	12.6	124,331,087	19.5	

21

				3,314,030,228	47.1		
				1,574,003,966	22.4	2,141,582,880	
30.5				3,500,456,405	57.7		
)	454,744,757	7.5		1,059,126,568	17.5	1,050,800,688	17.3

“ ” “ ” ’

35 TOEIC® 730 TOEFL® BT 80  
 TOEIC® P ECBO

				1,892,872,314	36.6		
				1,766,453,335	34.2	1,512,425,293	
29.2				2,189,050,268	55.6		
)	369,674,874	9.4		549,333,821	14.0	827,391,518	21.0

TOEIC®  
21

2019

5,000

30

30

1

31

31

1,943,686,028 53.6  
 768,261,787 21.2

912,822,041

25.2 ) 259,341,837 7.5 2,208,763,610 63.5 500,842,991 14.4 507,650,247 14.6

(

)

SPLENDOR PLAN 2017 SDGs

30 10 JICA

SDGs

30 IDEC  
 Revi ew 24  
 10 14

446,137,225 49.3  
 189,522,970 21.0 268,879,100 29.7 )  
 515,826,311 62.0  
 46,133,695 5.5 57,183,944 6.9 212,654,504 25.6

10 36.8

90

30 25

344,499,996 79.6  
 25,732,469 5.9 62,358,177 14.5 )  
 382,557,073 80.5  
 68,698,371 14.5 16,626,288 3.5 7,220,882 1.5

10

10

DMT

22

30

			31, 584, 787, 371	85.1	
	3, 717, 866, 707	10.0	1, 805, 389, 747	4.9	
	19, 391, 854, 266	54.1			15, 146, 491, 280
42.3	1, 308, 168, 501	3.6	1, 261, 529, 778		

31 4 1      2 3 31

(A)	4, 086, 097, 899
	14, 370, 114, 521
	17, 424, 329, 448
	3, 719, 366, 707
	0
	3, 312, 306, 255
	389, 275, 452
	17, 785, 000
	31, 584, 787, 371
	423, 227, 036
	153, 160, 754
B	812, 677, 529
	802, 758, 899
	9, 918, 630

	0
	0
	0
	0
	0
	0
C	1, 850, 036, 313
	0
	722, 350, 000
	841, 390, 030
	154, 598, 749
	124, 818, 184
	0
	0
	6, 879, 350
D=A+B+C	1, 423, 384, 057
E	164, 173, 352
	381, 547, 515
	407, 870, 670
	531, 575, 541
	422, 015, 996
(F=D+E)	1, 587, 557, 409

	4, 086	30	375	
	897			143
ESCO		880		
	280			
	813	30	367	
		369		
	1, 850			
19				
	1, 564			125
	1, 423			
	345			613
	161		626	

28

22-27

28  
59  
206  
26  
437, 858, 369 57.7  
41, 886, 008 5.5  
40.2  
130, 699, 095 17.2  
337, 656, 414 42.2  
148, 737, 696 19.6  
140, 335, 584 17.6  
321, 760, 603  
28  
Nature Science Physical Review Letters  
( ) 107 ( ) 23 130  
( 134 97% ) 43 (33%)  
30 36 ( 127 28% ) ( ) 232  
69 30% 80  
109, 248, 637 57.3  
41.7  
95, 484, 368 25.1  
4, 665, 275 1.2  
280, 246, 522 73.7  
1, 907, 688 1.0  
79, 368, 379  
28  
( )  
20  
- 20  
28  
Si CIMS  
30 18 42 229  
24 16  
52

16

CMS

CMS

1700

112, 117, 436 53.7  
36, 775, 357 17.6

63, 302, 360 21.0

131, 753, 468  
106, 774, 731 35.3

59, 871, 176 28.7  
43.7

11

30

SSH

SGH

1, 814, 298, 595 85.3  
140, 852, 140 6.6

172, 654, 236 8.1  
85.8

2, 122, 633, 113

326, 160, 851 13.2

26, 190, 929 1.0

34, 860, 192

100

SPLENDOR PLAN 2017

HMMS2

29

VG

30

VG

30



[https://www.hiroshina-u.ac.jp/about/public\\_info/other\\_public\\_info/financial\\_affairs/financial\\_info](https://www.hiroshina-u.ac.jp/about/public_info/other_public_info/financial_affairs/financial_info)

[https://www.hiroshina-u.ac.jp/about/business\\_info/third\\_term](https://www.hiroshina-u.ac.jp/about/business_info/third_term)

[https://www.hiroshina-u.ac.jp/about/public\\_info/other\\_public\\_info/financial\\_affairs/financial\\_info](https://www.hiroshina-u.ac.jp/about/public_info/other_public_info/financial_affairs/financial_info)

[https://www.hiroshina-u.ac.jp/about/business\\_info/third\\_term](https://www.hiroshina-u.ac.jp/about/business_info/third_term)

[https://www.hiroshina-u.ac.jp/about/public\\_info/other\\_public\\_info/financial\\_affairs/financial\\_info](https://www.hiroshina-u.ac.jp/about/public_info/other_public_info/financial_affairs/financial_info)


	4	-	-	-	-	-	-	4
	2	-	-	-	-	-	-	2
	33	-	30	-	-	-	30	4
	-	25, 525	25, 411	76	-	-	25, 487	38

		-		
		-		
		-		
		-		
		-		
		-		
		-		
		-		
		-		
		-		
		30	30	30
		-		
		-		
		-		
		30		
		30		

		835					
		71					
		-					
		-	370	280	835	184	
		906			65		6
		22,414					
		-			22,414		
		-	( 22,414				90%
		-			2		
		22,414			1	115%	
		2,162		PCB			
		4			2,162		
		-	2,024	125		13	
		-			4		
		2,167				2,162	
		25,487					

		-					
		4			4		
		-					
		4					

		-	
		2	2
		-	
		2	

		-	
		4	4

