



10

11

100

29

SPLENDR PLAN 2017

100

28

AKPI®

BKPI®

SPLENDR PLAN 2017

( ) ( 30 22 )

VG

3

SPLENDR PLAN 2017

30

URA

AMED JST

30

30

[https://www.hiroshina-u.ac.jp/about/business\\_info/third\\_term](https://www.hiroshina-u.ac.jp/about/business_info/third_term)

30

[https://www.hiroshina-u.ac.jp/about/HJ\\_self\\_evaluation/uni\\_v\\_evaluation/report](https://www.hiroshina-u.ac.jp/about/HJ_self_evaluation/uni_v_evaluation/report)

			10		100
				100	
SERU					
	AKPI®	IR			

--	--	--	--	--	--

24					
			1,309	1,455	1,304
25					
28					
47					
57					
11	50				
15			10		
16					
21		10	15		

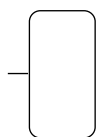
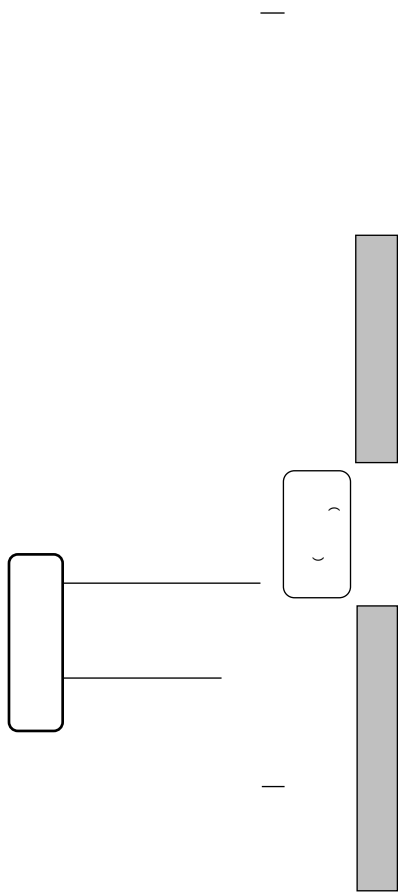
24

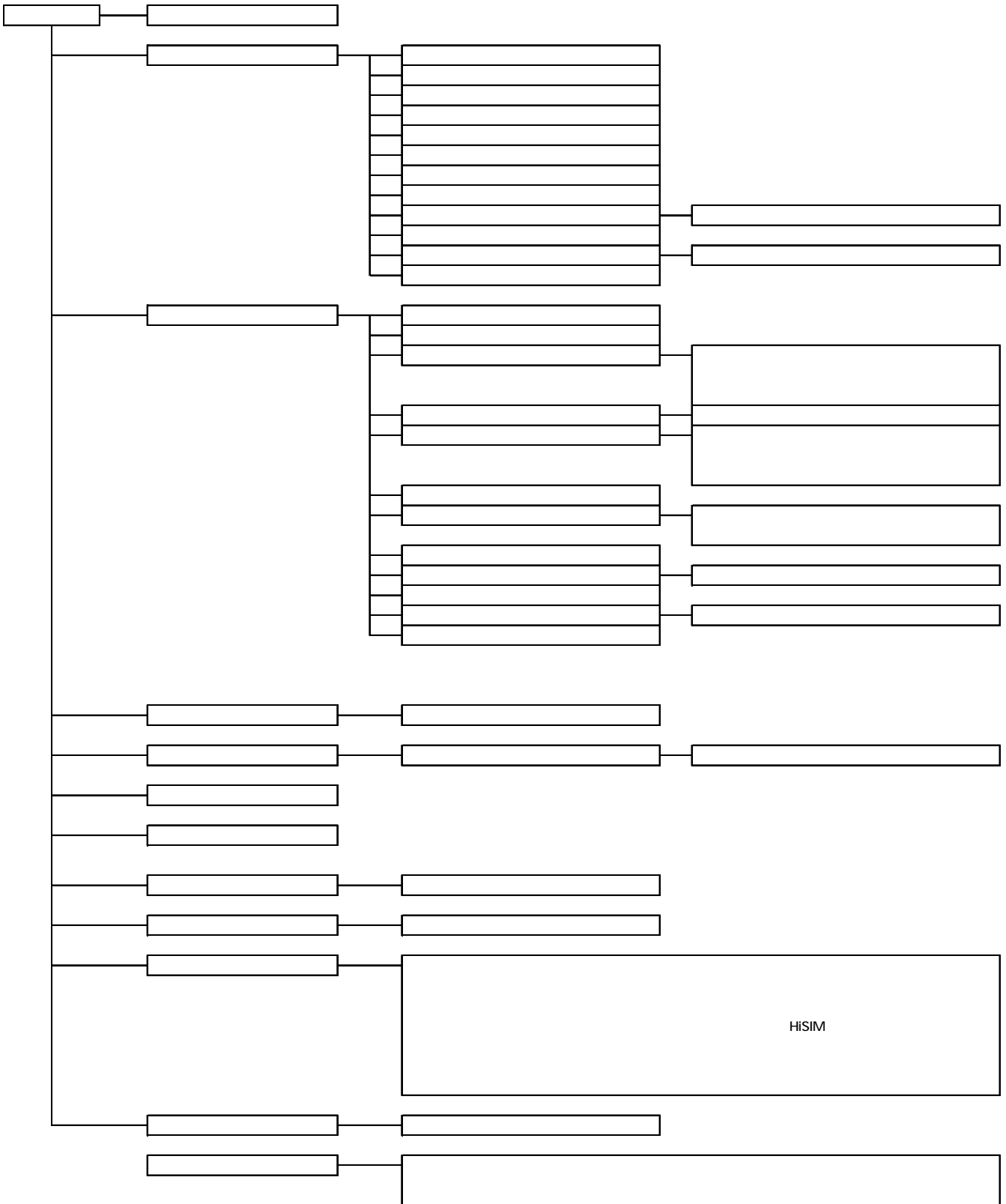
2012

27

29

SPLENDOR PLAN 2017










--

[https://www.hiroshina-u.ac.jp/about/public\\_info/other\\_public\\_info/financial\\_affairs/financial\\_info](https://www.hiroshina-u.ac.jp/about/public_info/other_public_info/financial_affairs/financial_info)

	173,296,102,466		38,831,811,725
	171,735,535,277		21,735,197,393
	96,864,928,886		3,830,048,150
	57,000,000		12,220,486,000
	99,094,842,843		540,462,972
	48,466,701,112		540,462,972
	16,757,811		278,367,358
	7,192,886,481		227,249,852
	4,865,735,124		17,565,134,683
	531,743,440		39,662,440
	515,895,278		7,582,924,116
	50,571,952,768		5,856,678,713
	43,090,406,503		4,085,869,414
	13,552,994,614		
	938,682,073		
	1,560,567,189		56,396,946,408
	25,665,793,712		
	11,525,472,777		147,215,368,427
	7,147,650,000		147,215,368,427
	5,248,978,879		15,812,319,326
	25,529,311		11,161,900,669
	1,718,162,745		142,564,949,770
	198,961,896,178		198,961,896,178

[https://www.hiroshina-u.ac.jp/about/public\\_info/other\\_public\\_info/financial\\_affairs/financial\\_info](https://www.hiroshina-u.ac.jp/about/public_info/other_public_info/financial_affairs/financial_info)

(A)	73,980,668,555
	72,290,128,220
	3,953,852,620
	4,905,376,571
	18,927,416,414
	1,418,043,197
	39,357,677,827
	3,727,761,591
	1,426,855,955
	185,773,080
	77,911,300
(B)	76,876,151,399
	25,343,580,478
	8,876,012,664
	30,687,747,772
	11,968,810,485
(C)	301,465
(D)	43,553,628
B-A+C+D	2,939,337,937

[https://www.hiroshina-u.ac.jp/about/public\\_info/other\\_public\\_info/financial\\_affairs/financial\\_info](https://www.hiroshina-u.ac.jp/about/public_info/other_public_info/financial_affairs/financial_info)

(A)	8,660,062,378
	40,067,311,632
	27,459,530,179
	25,422,499,000
	8,668,137,871
	30,660,329,372
	11,435,937,946
(B)	4,149,557,836
(C)	2,264,971,410
(D)	0
E=A+B+C+D	2,245,533,132
(F)	3,779,939,645
(G=F+E)	6,025,472,777

[https://www.hiroshina-u.ac.jp/about/public\\_info/other\\_public\\_info/financial\\_affairs/financial\\_info](https://www.hiroshina-u.ac.jp/about/public_info/other_public_info/financial_affairs/financial_info)

	26,442,937,015
	74,007,214,705
	47,564,277,690
	2,233,160,488
	0
	0
	0
	2,436,913
	3,125,748
	36,946,335
	631,603,568
	58,421,035
	0
	28,145,423,966

30		188	0.1%			198,962
				5,446	89.6%	11,525
				2,134	4.0%	50,611
	1,844	19.8%	7,482			
30	1,249	2.2%	56,397			
				841	18.0%	3,830
		722	5.6%	12,220		
547	7.6%	6,688				

					1,698	28.9%	7,583	
30		1,437	1.0%	142,565				
		1,534		145.7%	2,588			
				2,169	5.6%	40,689		
30	669	0.9%	73,981					
		242	5.2%	4,905				
333	30.7%	1,418						
30	2,121	2.8%	76,876					
		1,455	5.0%	30,688				
9.1%	3,866	312	480.8%	377				321
				194	10.8%	1,611		
					27			
	27					44		30
	2,939							
30				2,074	31.5%	8,660		
				1,704	5.9%	30,660		1,514
81.6%	3,370					369	20.0%	2,217
						1,382	(5.6%)	25,964
30				123	3.1%	4,150		
						5,900	218.5%	3,200
						5,500	122.2%	1,000
	728	191.7%	1,108					
30				224	11.0%	2,265		
				326	98.1%	658		
						253	34.2%	485
				82	8.1%	931		
30				1,320	4.5%	28,145		
						1,455	5.0%	30,688
,	198	7.3%	2,902					
						603	0.8%	72,290

	26	27	28	29	30
	210,706	205,514	200,995	198,774	198,962
	66,609	62,603	59,391	57,646	56,397
	144,097	142,911	141,604	141,128	142,565
	74,799	74,783	72,828	73,311	73,981
	74,053	74,649	73,734	74,755	76,876
	897	4	1,053	1,579	2,939
	4,143	4,469	5,548	6,586	8,660
	1,033	4,749	2,634	4,027	4,150
	1,310	2,143	2,191	2,041	2,265
	4,961	2,538	3,261	3,780	6,025
	34,291	34,423	30,850	29,465	28,145
	32,703	31,174	28,337	27,705	26,443
	75,000	74,811	72,844	73,325	74,007
	42,296	43,637	44,506	45,620	47,564
	2,491	2,456	2,396	2,289	2,233
		17			
	2	2	0	2	2
	2	1	0	0	3
	48	54	29	7	37
	1,573	737	86	676	632
	618	91	171	139	58

1,633  
 1,455      5.0%      30,688      167      57.6  
 %      458  
    1,134      4

	26	27	28	29	30
	1,224	447	152	180	1,633
	460	598	1,052	1,130	1,134
	1,005	2	1,761	1,862	
					3,282
					67
					113
					359
					1,118
					836
					429
					104
					1,048
					1,200



640

0

369

0

746

	75,282	77,305	72,626	74,534	71,298	71,959	72,414	73,776	72,936	77,440
	26,954	28,070	26,007	26,545	24,888	25,245	25,045	25,490	25,163	25,436
	4,800	5,541	2,638	2,223	1,934	1,781	1,924	2,193	1,502	1,932
	8,510	8,535	8,583	8,630	8,630	8,624	8,663	8,704	8,673	8,745
	27,752	27,421	27,182	28,472	28,341	28,291	28,166	28,925	28,728	30,610
	7,206	7,738	8,216	8,664	7,505	8,018	8,616	8,464	8,870	10,717
	75,282	75,471	72,626	73,154	71,298	69,958	72,414	71,134	72,936	72,170
	35,957	35,384	34,996	35,641	34,184	33,614	34,258	33,721	34,463	33,625
	27,040	26,653	26,465	26,463	27,289	26,522	27,113	26,610	27,441	27,180
	12,285	13,434	11,165	11,050	9,825	9,822	11,043	10,804	11,032	11,355
	0	1,834	0	1,380	0	2,001	0	2,642	0	5,270

30

30

76, 876, 151, 399  
30, 687, 747, 772 39.9

25, 343, 580, 478 33.0  
20, 844, 823, 149 27.1

100

30

10

Global Peace Leadership Program  
29

29

30

20

TCEIC®

730

TCEIC® L&R IP

161

10

11

TCEIC® L&R IP

11

72

28

BEM

BEM-j

30

29

130

430

30

11

BEM-

BEM

BEM

AO

30

30

10

15

30

47

345

29  
CSIR

386

MU

(SDGs)  
FE SDGs

NERPS

Peace and sustainability

( ) ( 30 22 )

VG





RU SGU

30

21

30

UEA

1,232,327,306 68.0

447,523,093 24.7

133,211,072 7.3

1,386,096,892 81.5

95,808,679 5.6

155,986,257 9.2

62,127,602 3.7

30

29

HU JS

4 2 à 0 2 3m 5

30

3 1

					725,508,408	39.6		
					1,054,792,405	57.5	53,331,182	2.9
				829,185,400	83.1			)
65,239,144	6.5		58,856,089	5.9	44,518,924	4.5		

30

10

31

29

29

31

31

					1,526,656,933	52.3		
					844,682,788	28.9	548,406,858	18.8
				1,766,361,900	70.9			)
99,618,271	4.0		353,734,143	14.2	271,520,337	10.9		

30

(HH)

34.4

)

					521,759,144	53.2		
					121,652,335	12.4	337,248,065	
				632,831,401	58.4			
42,850,417	3.9		208,903,014	19.3	199,723,786	18.4		

21

30

29

CT

C

3,323,219,846 47.7

1,615,641,972 23.2 2,027,929,624

29.1

3,519,575,971 59.5

)

481,292,809 8.1

865,224,091 14.6

1,052,652,273 17.8

“ ”

“ ”

,

30

35

TOEIC730

TOEFLiBT80

TOEIC-IP

ECBO

1,959,979,280 39.4

1,790,506,849 35.9 1,228,472,615

24.7

2,310,436,008 61.2

)

253,866,146 6.7

515,166,515 13.6

699,094,176 18.5

30

TOEIC

TOEIC

730

143

124

2,824

1,703

11 13

917,998,744 53.6

389,028,389 22.7 406,886,648

23.7

1,051,328,625 63.7

)

194,247,313 11.8

209,371,011 12.7

194,276,966 11.8

( )

30

SPLENDOR PLAN 2017

SDG

30 10 JICA  
K °

þ ʒ;ÛXÉBD !¶># 3dÈ !í c

y

30 ) 30 28 10  
 30 JRAT DMT JMT DPAT( 260

30

22

30 30  
 30  
 30

42.3 18,927,416,414 53.8 3,991,142,237 10.8 30,687,747,772 83.3 2,164,701,348 5.9 14,902,782,656  
 1,380,450,682 3.9 1,632,941,605

30 4 1 31 3 31

(A)	4,460,693,356
	14,227,600,639
	16,544,561,196
	3,998,867,637
	0
	3,002,895,135
	425,382,502
	570,590,000
	30,687,747,772
	382,965,000
	163,274,782
B	445,208,767
	433,542,050
	11,666,717

		0
		0
		0
		0
		0
		0
	C	1, 987, 537, 629
		0
		657, 695, 000
		931, 242, 480
		177, 559, 573
		220, 031, 545
		0
		0
		1, 009, 031
	D=A+B+C	2, 027, 946, 960
	E	167, 179, 760
		423, 121, 804
		509, 641, 347
		573, 934, 410
		526, 008, 501
	(F=D+E)	2, 195, 126, 720

	4, 461	561	
	365		654
		1, 455	
	445	607	30
			740
	1, 988		
19	1, 589		30
			220
	2, 028		
	63		493
	26	1, 498	

28

28  
204

30 58

28

A

438,306,219 58.0  
57,094,605 7.6  
45.8

155,959,678 20.6

103,844,433 13.8  
101,344,847 12.5

372,779,877

338,780,039 41.7

28

Nature Science Physical Review Letters

30 ( ) 136 93%  
32 ( ) 131 24%  
33%

( ) 93

( ) 34 127  
36 (28%)

30 ( ) 228 76  
73

50.2  
48.5

107,662,786 27.0

283,126,646 71.2  
7,018,247 1.8

2,850,800 1.3

106,908,257  
103,120,606

28

( )

28

-20

20

Si C CMOS

29

40

41

30

211

24

16

30

52



1/15

99,132,275 41.5  
46,221,858 19.4

93,516,219 39.1  
45.8

95,018,583 27.8

156,495,697  
90,149,631 26.4

11

30  
29

13

SSH

SGH

1,885,573,833 81.8  
233,787,854 10.1

186,483,773 8.1  
82.3

2,217,676,258

447,517,779 16.6

29,179,904 1.1

128,216,274

100

SPLENDOR PLAN 2017

HOMS2

VG

Tenasek Junior College

2016

[https://www.hiroshina-u.ac.jp/about/public\\_info/other\\_public\\_info/financial\\_affairs/financial\\_info](https://www.hiroshina-u.ac.jp/about/public_info/other_public_info/financial_affairs/financial_info)

[https://www.hiroshina-u.ac.jp/about/business\\_info/third\\_term](https://www.hiroshina-u.ac.jp/about/business_info/third_term)

[https://www.hiroshina-u.ac.jp/about/public\\_info/other\\_public\\_info/financial\\_affairs/financial\\_info](https://www.hiroshina-u.ac.jp/about/public_info/other_public_info/financial_affairs/financial_info)

[https://www.hiroshina-u.ac.jp/about/business\\_info/third\\_term](https://www.hiroshina-u.ac.jp/about/business_info/third_term)

[https://www.hiroshina-u.ac.jp/about/public\\_info/other\\_public\\_info/financial\\_affairs/financial\\_info](https://www.hiroshina-u.ac.jp/about/public_info/other_public_info/financial_affairs/financial_info)


	4	-	0	-	-	-	0	4

		-	
		-	
		-	
		-	
		-	
		-	
		-	
		-	
		-	
		-	
		14	<div style="display: flex; justify-content: space-around; align-items: center;"> <div style="text-align: center;">14</div> <div style="text-align: center;">14</div> <div style="text-align: center;">14</div> </div>
		-	
		-	
		-	
		14	
		14	

		1, 115						
		59						
		-	179	159	1, 115	448	329	
		-			42	17		
		1, 174						
		21, 951						
		-	(	156	21, 951	6 412		
		-			15, 383			
		-	90%				3	
		-						
		21, 951						
		2, 264						
		-			2, 264			
		-	47	1, 595		622		
		-						
		-				2, 264		
		2, 264						
		25, 389						

		-	
		4	4
		-	
		4	

		-	
		2	2
		-	
		2	

		-	
		3	3
		30	
		33	