

【本件リリース先】

文部科学記者会、科学記者会、
広島大学関係報道機関



広島大学

広島大学広報室

〒739-8511 東広島市鏡山 1-3-2

TEL : 082-424-4383 FAX : 082-424-6040

E-mail: koho@office.hiroshima-u.ac.jp

NEWS RELEASE

4 12



J-SPHE 1

10

2

3

2022 12 1

Journal of Infection

2020 2

2020 5

4		2019	1	2020	1	2020	2
2020	12					2020	5

	200
1	10

<i>pneumoniae</i>	<i>S. pneumoniae</i>	27	(95	<i>Streptococcus</i>	:19.2- 35.2%)
<i>influenzae</i>	<i>H influenzae</i>	24.4%	95	<i>Haemophilus</i>	:17.4- 31.4%
<i>pyogenes</i>	32.4%	95		<i>Streptococcus pyogenes</i>	<i>S.</i>
					:6.0- 58.9%

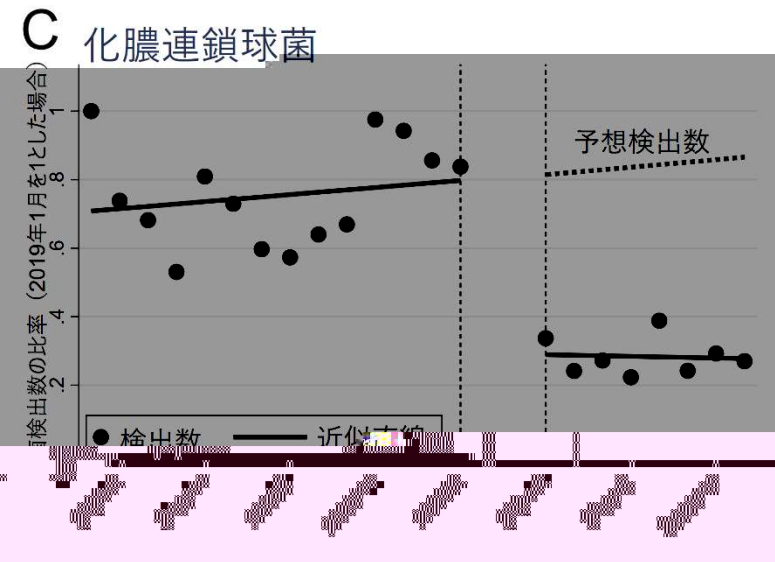
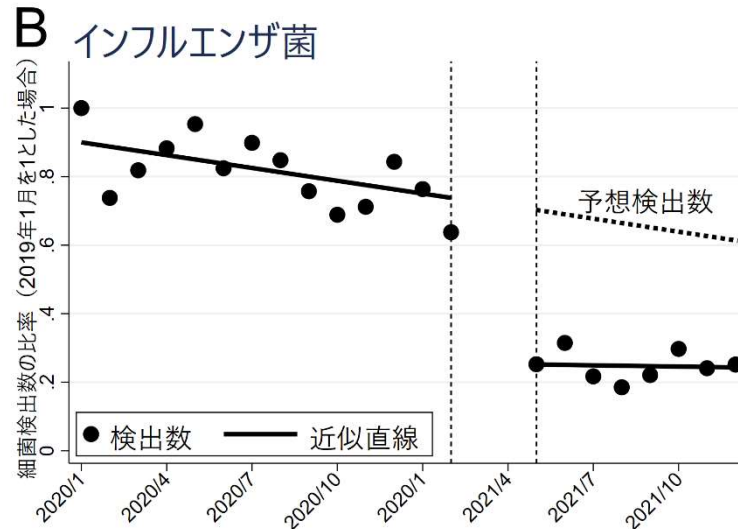
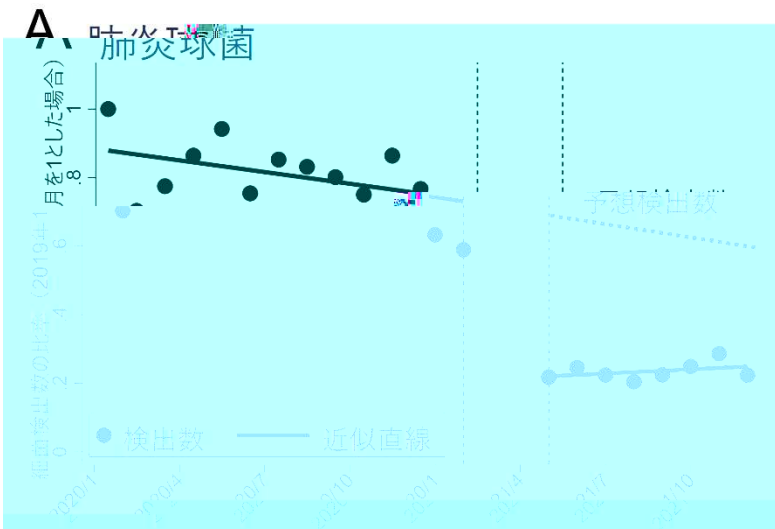
Staphylococcus aureus *S.aureus*
(Enterococcus faecalis: E.faecalis) *(Escherichia coli E.coli)*

Journal of Infection

**Impact of the early phase of COVID-19 on the trends of isolated
bacteria in the national database of Japan: an interrupted time-series
analysis**

**Masaki Kakimoto Daisuke Miyamori Keitaro Omori
Tomoki Kobayashi Kotaro Ikeda Seiya Kashiwama
Hiroki Ohge Masanori Ito**

DOI <https://doi.org/10.1016/j.jinf.2022.11.025>



1

AMR

J-SPHE

AMR

AMR

2

3

4

5

6

7

Tel 082-257-5460 FAX 082-257-5461
E-mail morinoya@hiroshima-u.ac.jp